



## BURLINGTON ROAD, W4

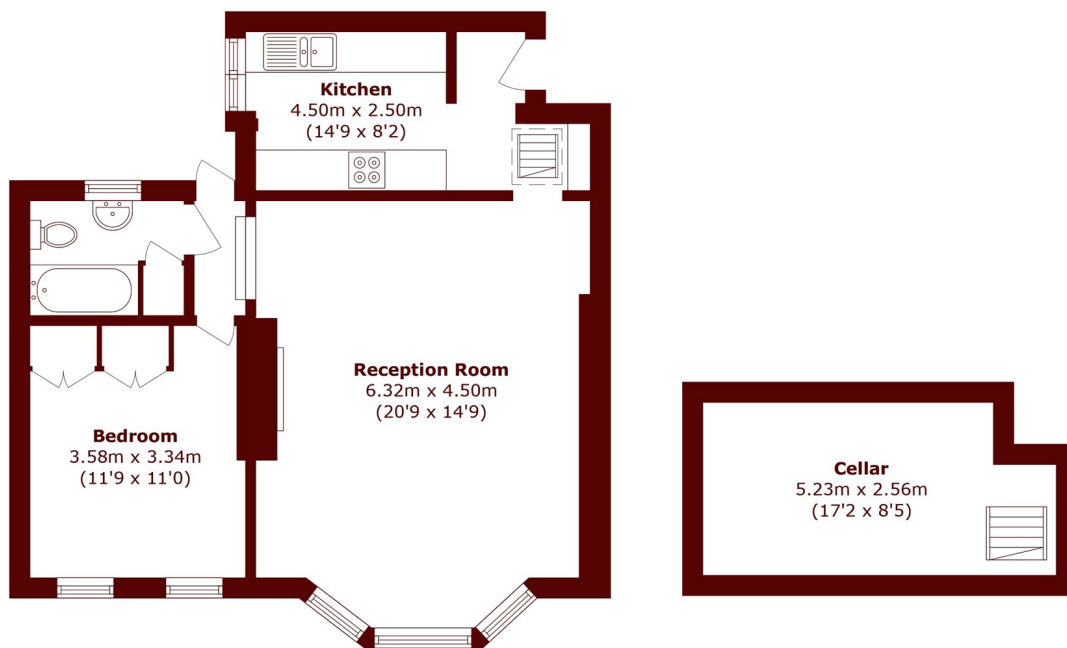
£575,000

Set in this grand Victorian building, this one bedroom ground-floor period conversion is full of charm and character.

One bedroom  
High ceilings  
Large cellar

Communal gardens  
Allocated parking  
Energy rating: d

# STEP INSIDE BURLINGTON ROAD



**Ground Floor**

**Cellar**

Total area (approx.): 71.8 sq. m (772.8 sq. ft)  
(Including Cellar)

Chiswick  
020 8994 2556

Energy Rating: D We aim to make our particulars both accurate and reliable. However, they are not guaranteed; nor do they form part of an offer or contract. If you require clarification on any points then please contact us, especially if you're traveling some distance to view. Please note that appliances and heating systems have not been tested and therefore no warranties can be given as to their good working order

**MARSH &  
PARSONS**