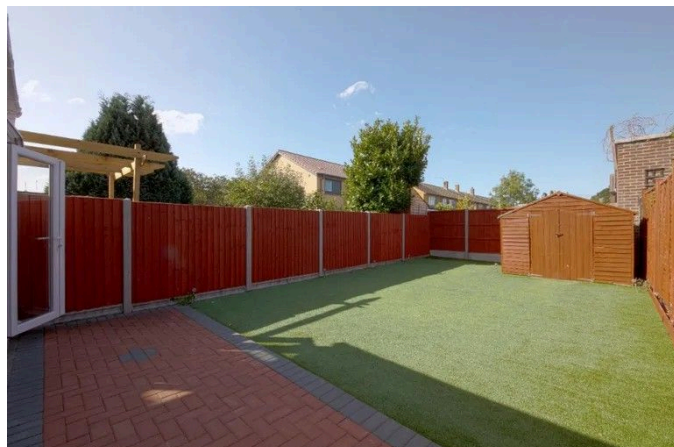
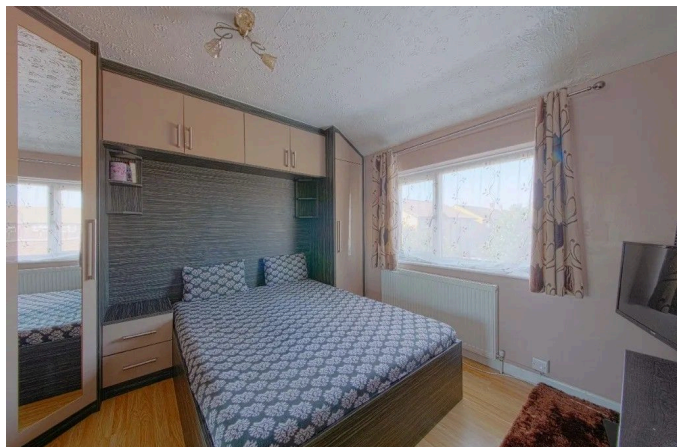
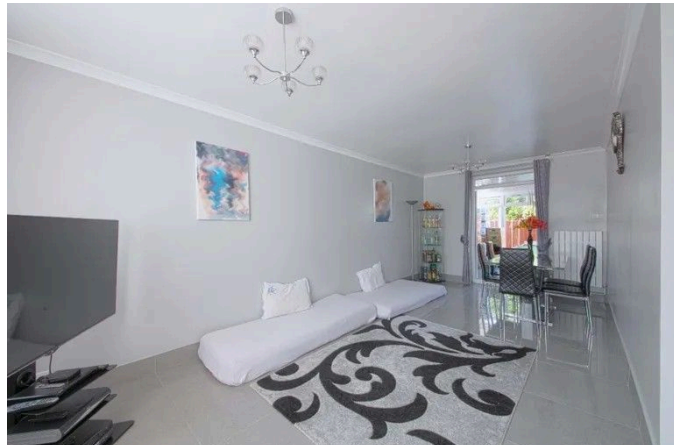


## Gascons Grove, Slough, SL2 1TH

£430,000

3 1 1




### 3-Bed Terraced House for Sale – SL2 1TH

Chain free and priced to sell, this well-presented home features three bedrooms with fitted wardrobes and beds, a spacious lounge, 4x4 conservatory, modern kitchen, and low-maintenance garden with artificial lawn and shed. Benefits include a driveway for two cars and convenient location near local amenities – ideal for families or first-time buyers.

910 Uxbridge Road, Hayes  
Middlesex UB4 0RW

info@shawsoflondon.co.uk  
www.shawsoflondon.co.uk

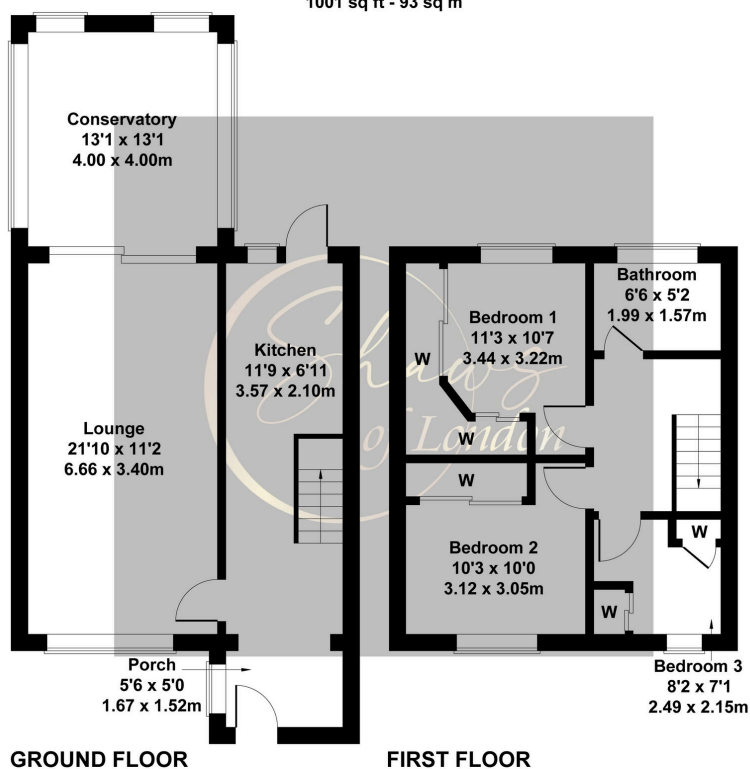
020 8561 6888

 @shawsoflondon

- Chain free - priced to sell
- Spacious living space
- Low-maintenance rear garden with artificial lawn and a garden shed, perfect for year-round enjoyment.
- 3 bedroom
- 2 car driveway
- 
- 
- 

## Gascons Grove, Slough SL2 1TH

Approximate Gross Internal Area  
1001 sq ft - 93 sq m



Not to Scale. Produced by The Plan Portal 2025  
For Illustrative Purposes Only.