



The Esplanade, The Hoe, Plymouth, PL1 2PJ
£495,000 Share of the Freehold



The Esplanade

The Hoe, Plymouth, PL1 2PJ

Charming two bedroom garden flat in a Grade II Listed building on Plymouth Hoe. Period features, modern kitchen, stunning views, prime location near amenities and transport links.

Council Tax band: D

Tenure: Share of Freehold

Service Charge: £376.31

- A Two Bedroom Garden Flat offering spectacular views over Plymouth Hoe towards Plymouth Sound
- The property is in lovely condition throughout and has been sympathetically modernised
- Accommodation includes a large living room with feature Fire Place and large Art Nouveau Cast Iron Radiators
- Two double bedrooms and a nicely sized Shower Room
- A pleasant Kitchen has been recently fitted with feature Ceiling lighting
- To the front is the enclosed and good sized walled Garden that offers borders and beds, offering views towards Plymouth Sound and Drakes Island
- Unusually, the Garden also enjoys the benefit of a side access that runs the length of the property - A gardeners delight!
- A Ground floor Garden Flat within a Grade II* Listed Building situated on Plymouths historic Hoe Promenade
- Recently fitted Kitchen and Bathroom with Travertine tiles



The Esplanade, Plymouth PL1 2PJ

The Hoe, Plymouth

Step into a piece of Plymouth's rich heritage with this charming two bedroom garden flat, gracefully set within a Grade II* Listed building on the historic Hoe Promenade, offering some of the city's most spectacular views across Plymouth Hoe and out towards the sparkling waters of Plymouth Sound. Inside, the property welcomes you with an inviting blend of period character and modern comfort, all lovingly maintained and sympathetically updated to create a truly special home. The large living room is a real highlight, featuring a striking fireplace that draws the eye and beautiful cast iron radiators that nod to the building's history, making it the perfect space to relax or entertain while taking in the ever-changing coastal scenery.

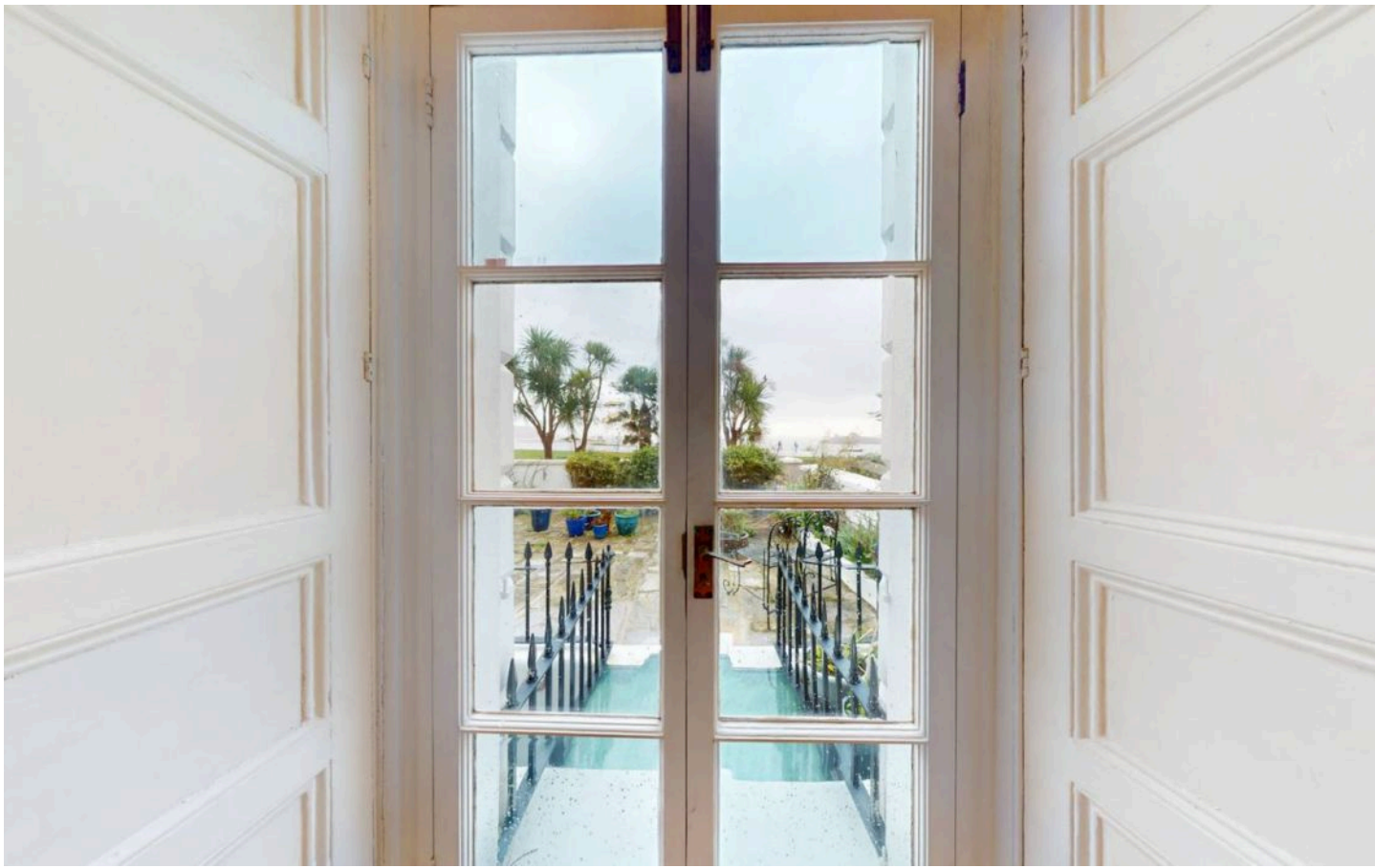
Both bedrooms are generous doubles, offering plenty of space for restful nights and peaceful mornings, while the well-sized shower room combines practicality with style. The kitchen, recently fitted and thoughtfully designed, boasts feature ceiling lighting that adds a touch of contemporary flair to the classic setting, making meal prep a pleasure whether you're cooking for two or a few friends.

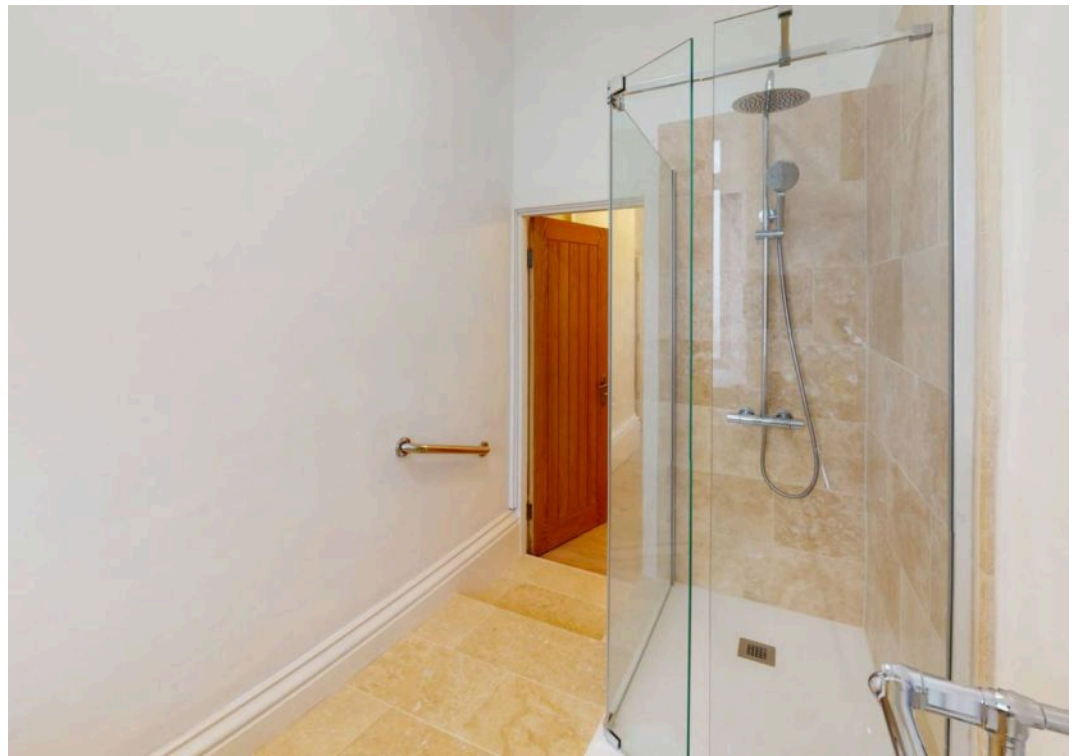
The property offers owners the benefit of a Residential Permit Parking scheme run by Plymouth City Council.

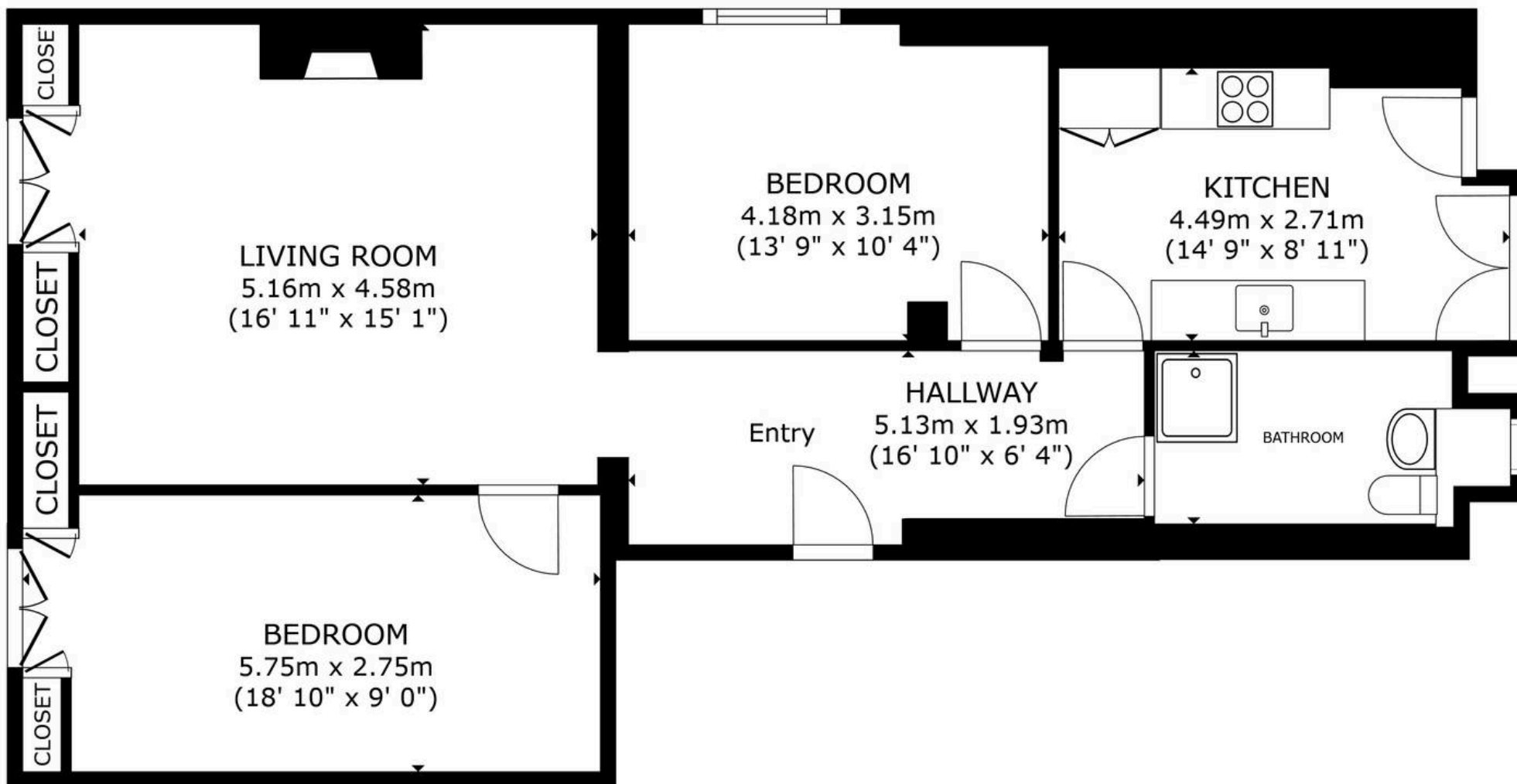
Throughout, the flat's lovely condition is evident, with every detail carefully considered to balance the historic charm of the building with the needs of modern living. The property's unique character is further enhanced by its connection to Plymouth's storeyed past, making it more than just a place to live - it's a piece of history you can call home. This is











FLOOR PLAN



Atwell Martin

Atwell Martin, 65 Southside Street – PL1 2LA

01752 202121

plymouthsales@atwell-martin.co.uk

plymouth.atwellmartin.co.uk/

Atwell Martin Plymouth endeavour to ensure the accuracy of property details produced and displayed. Please note that we have not tested any apparatus, equipment, fixtures, fittings or services and so cannot verify that they are connected, in working order or fit for purpose. It is imperative that the buyer of any property makes such checks, prior to purchase so as to satisfy themselves of the properties suitability for their purchase. .

