

YELLANDS
est 1930

FOR SALE



1 Bedroom



1 Bathroom



480 sqft

EPC
Rating C

LYNDHURST COURT

South Woodford, E18

£300,000

Call us: 020 8491 8080



Some images have been digitally enhanced or virtually staged using AI to illustrate how the property may look when furnished. These images are for guidance only and may not reflect the current condition or exact layout of the property.

The Story of LYNDHURST COURT

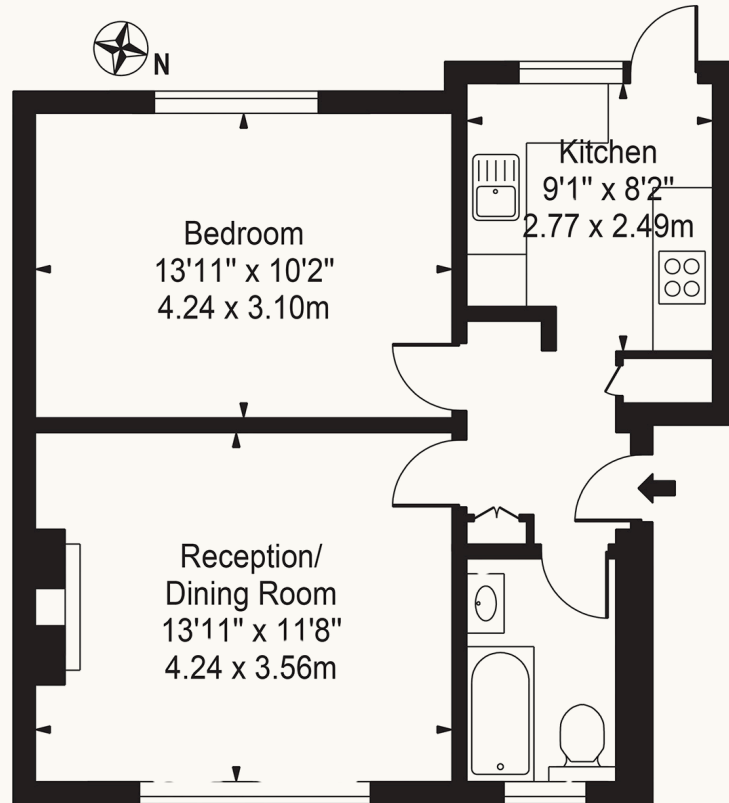
Some homes stand out because of their finish. Others because of their location.

Positioned within one of South Woodford's most desirable residential neighbourhoods, this well-presented apartment combines generous proportions with a location that continues to attract buyers seeking convenience, community and excellent transport links.

The accommodation centres around a bright bay-fronted living and dining room, creating a welcoming space for both relaxing and entertaining. The fitted kitchen offers practical everyday living, while the spacious double bedroom benefits from fitted mirrored wardrobes, providing excellent built-in storage. A well-appointed bathroom and welcoming entrance hall complete the layout.

Lyndhurst Court

Approx. Gross Internal Area 480 Sq Ft - 44.59 Sq M



Ground Floor

For Illustration Purposes Only - Not To Scale

This floor plan should be used as a general outline for guidance only and does not constitute in whole or in part an offer or contract. Any intending purchaser or lessee should satisfy themselves by inspection, searches, enquiries and full survey as to the correctness of each statement. Any areas, measurements or distances quoted are approximate and should not be used to value a property or be the basis of any sale or let.

Outside, residents enjoy access to beautifully maintained communal gardens, creating a peaceful setting rarely found so close to local amenities.

Churchfields is widely regarded as one of South Woodford's most desirable locations, with South Woodford Underground Station (Central Line), George Lane's independent cafés, restaurants, boutique shops and everyday amenities all within easy walking distance. Excellent road connections and nearby green spaces further enhance the area's appeal.

Key Information

- Spacious One-Bedroom First Floor Apartment
- Well-Maintained Communal Gardens
- Sought-After Churchfields Location
- Walking Distance to South Woodford Station (Central Line)
- Close to George Lane Shops, Cafés and Restaurants
- Ideal First-Time Purchase or Investment
- Lease Length 261 Years
- Chain Free
- EPC Rating C

Score	Energy rating	Current	Potential
92+	A		
81-91	B		
69-80	C	71 C	77 C
55-68	D		
39-54	E		
21-38	F		
1-20	G		