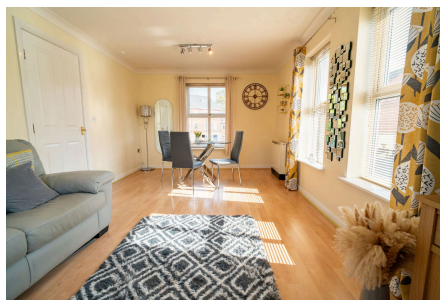


Dickens Heath Road, Shirley, Solihull, B90 1RL

Offers Over £175,000

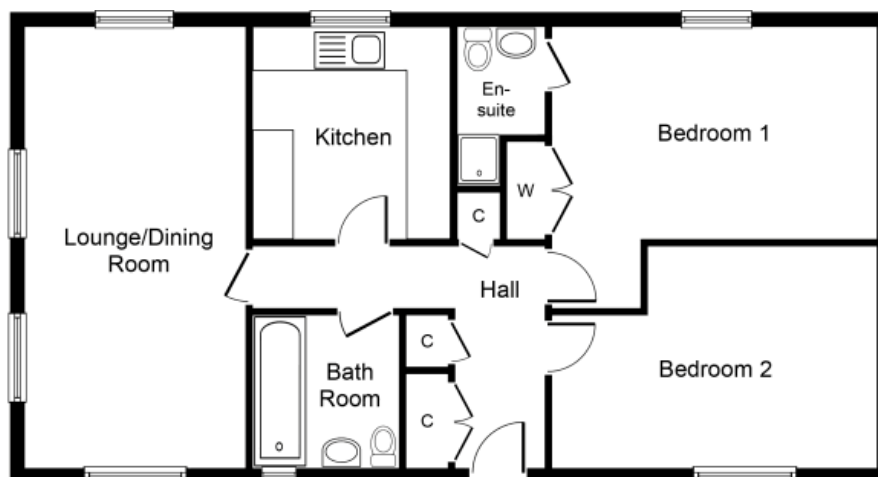
🛏 2 🚿 2 🚗 1



A well-presented first floor apartment located in the sought-after village of Dickens Heath, offering a vibrant lifestyle with its own High Street filled with shops, restaurants, and wine bars

Key Features

- Well-presented first floor apartment in desirable Dickens Heath Village
- Modern kitchen with integrated appliances and breakfast bar
- Master bedroom with fitted wardrobe and en-suite shower room
- Ample storage including airing cupboard and cloaks cupboard
- Single garage to rear providing off-road parking or extra storage
- Spacious lounge/dining room with multiple windows for natural light
- Two good-sized bedrooms with laminate flooring throughout
- Family bathroom with white suite and tiled flooring
- Secure communal entrance shared with only one other apartment
- Excellent location close to shops, restaurants, and transport links



Whilst every attempt has been made to ensure the accuracy of the floor plan contained here, measurements of doors, windows, rooms and any other items are approximate and no responsibility is taken for any error, omission, or mis-statement. This plan is for illustrative purposes only and should be used as such by any prospective purchaser or tenant. The services, systems and appliances shown have not been tested and no guarantee as to their operability or efficiency can be given.