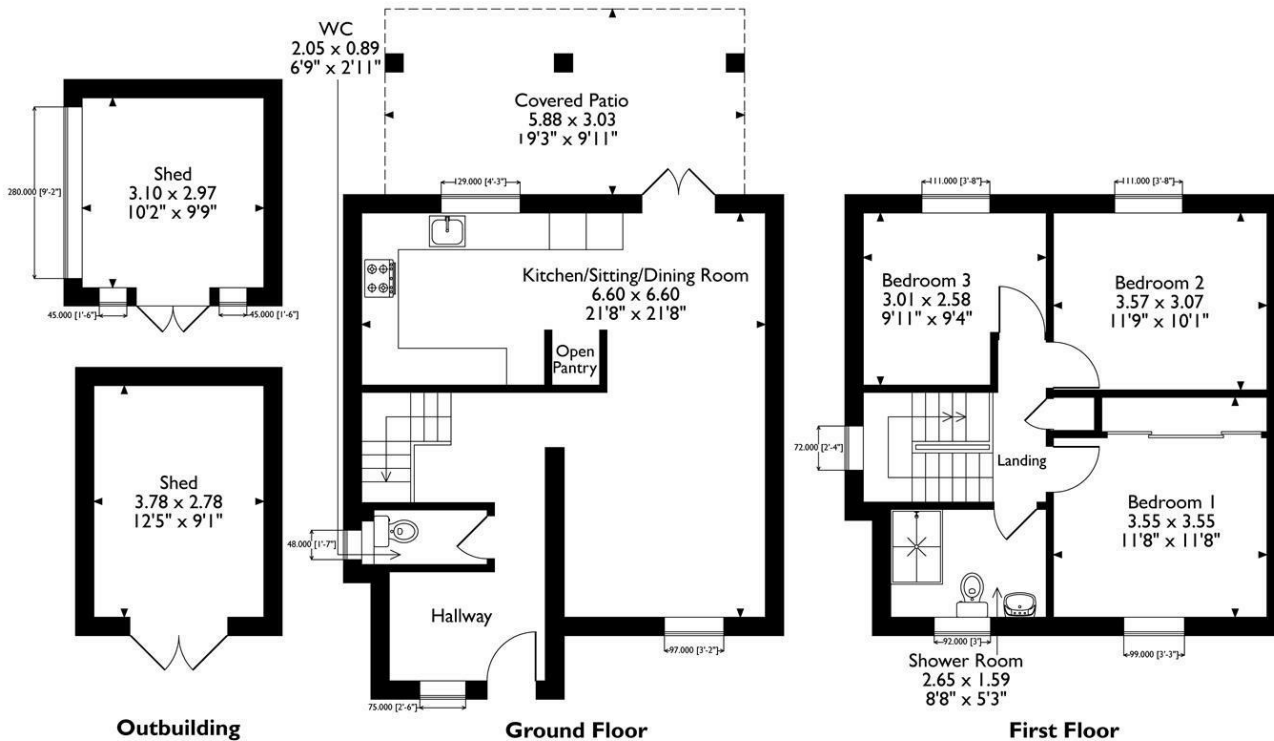






Knowlton Road, Poole
 Approximate Gross Internal Area
 Main House = 958 SQFT/89 SQM
 Outbuilding = 215 SQFT/20 SQM
 Total = 1173 SQFT/109 SQM



Please note that the location of doors, windows and other items are approximate and this floorplan is to be used for illustrative purposes only. Unauthorized reproduction is prohibited.

- Well-proportioned three bedroom home
- Outdoor space with potential for entertaining or gardening
- Ideal for first-time buyers, families, or investors
- No Onward Chain
- EPC Rating TBC
- Council Tax Band C

Situated in a popular residential area of Poole, this well-presented home on Knowlton Road offers spacious and practical accommodation, making it an excellent choice for first-time buyers, families, or investors alike.

The property features a bright and welcoming living area, providing comfortable space for everyday living and entertaining. The kitchen is well arranged with ample storage and workspace, offering practicality alongside potential for modernisation or personalisation.

Upstairs, the home benefits from generously proportioned bedrooms, ideal for family living, guest accommodation, or home office use. The bathroom is conveniently positioned to serve the first-floor accommodation.

Externally, the property enjoys outdoor space with scope for relaxing, entertaining, or gardening, while the location offers easy access to local amenities, schools, parks, and transport links throughout Poole and the surrounding areas.

Offering a balanced layout and excellent potential, this property represents a fantastic opportunity to secure a home in a convenient and well-established location.

Early viewing is highly recommended.

