



Flat (EPC Rating: D)

47 WHITEGATE DRIVE, BLACKPOOL,
LANCASHIRE, FY3 9DG

PCM

£725 PCM



2 Bedroom Flat located in Lancashire

Welcome to Whitegate Drive...

This superb example of a first floor apartment and really must be viewed to fully appreciate both the size and standard on offer. Not only is it located above a quiet shop (open 9-5) on Whitegate Drive, amenities and public transport links are quite literally on your doorstep. And, with its own private entrance, what's not to love?

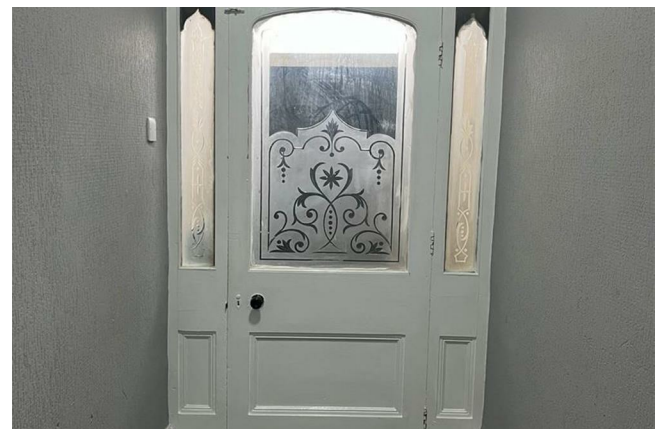
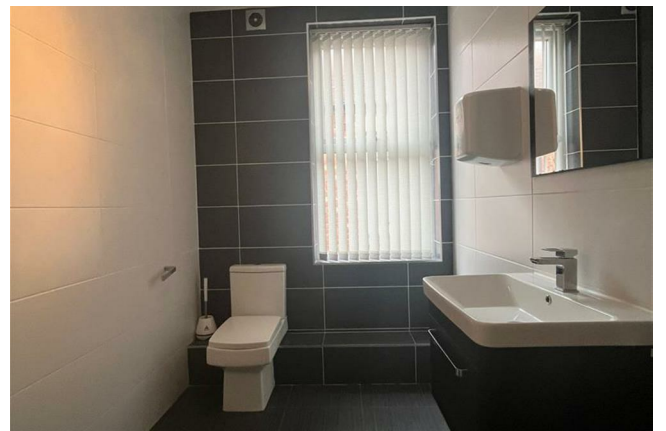
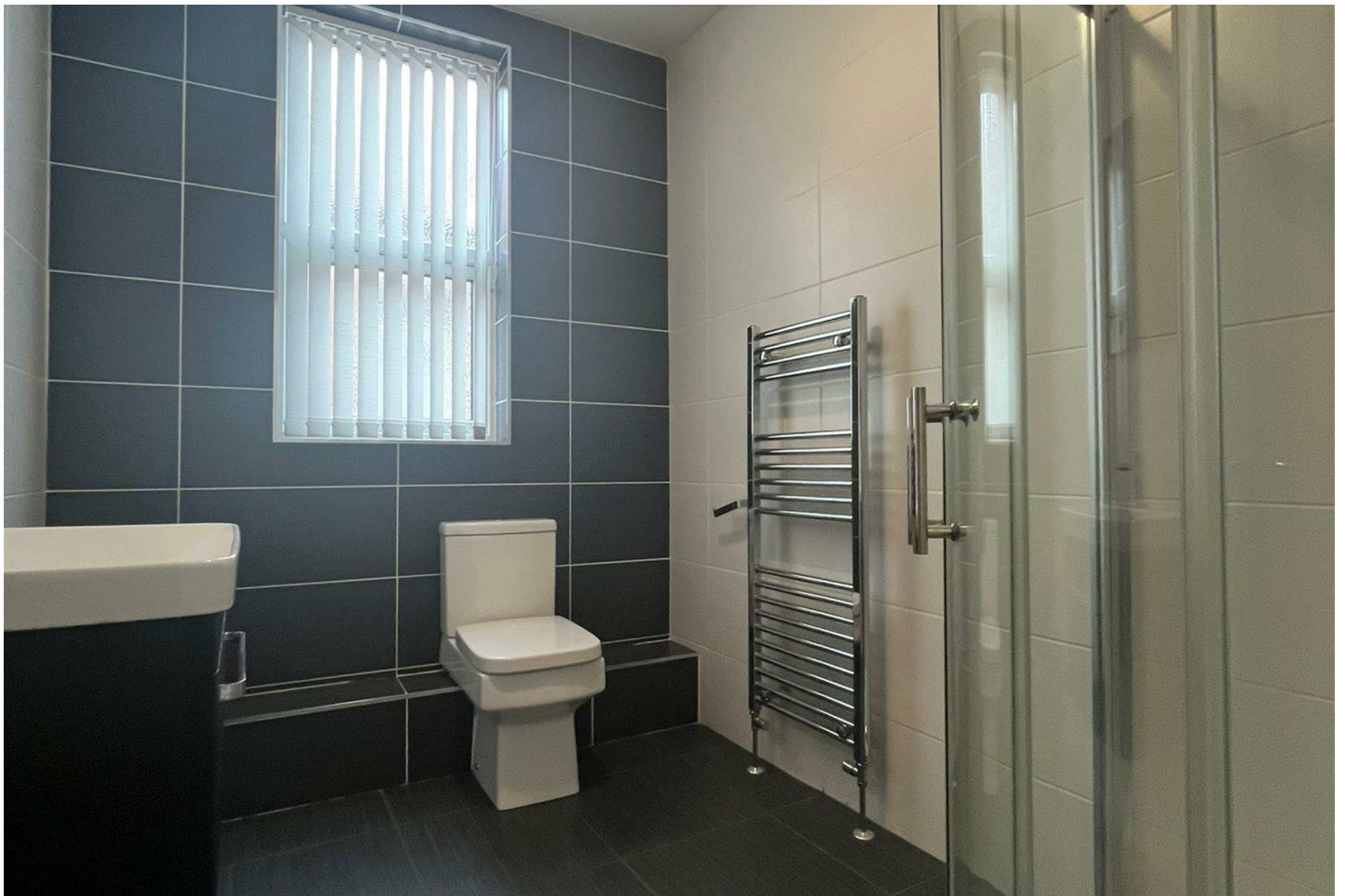
Inside, you are greeted by a generous entrance hall which leads you up to the first floor, split level accommodation. To the rear of the property, there is one of two double bedrooms; a spacious modern shower room in addition to a secondary WC. Towards the front of this lovely home is the second double bedroom and the generous open plan, bay fronted living room / kitchen.

Warmed by gas central heating and fit with uPVC double glazing throughout. This unfurnished home really is one to be considered and is available to let immediately.

One private parking space is available with the property.

Rent: £725.00pcm. Deposit: £830.00 Holding Deposit: £160.00

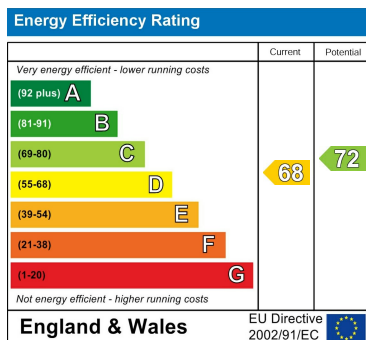
All applicants will need a working, homeowner guarantor to support your application. All tenants and guarantors are to meet the affordability criteria. This is calculated per property depending on the rent amount. Please ask for details.



Council Tax Band

A

Energy Performance Graph



Call us on

01253 886444

hello@lsblackpool.com

lsblackpool.com

Agents Note: Whilst every care has been taken to prepare these particulars, they are for guidance purposes only. All measurements are approximate and are for general guidance purposes only and whilst every care has been taken to ensure their accuracy, they should not be relied upon and potential buyers are advised to recheck the measurements.