



HARRISON
LAVERS &
POTBURY'S

5 Fortfield Lawn,
Manor Road
Sidmouth
EX10 8PH

£750,000 LEASEHOLD

NO ONGOING CHAIN. A large, three bedroom, contemporary style, apartment enjoying a lovely open outlook in an easterly direction towards Salcombe Hill and to the sea.

Fortfield Lawn is an imposing purpose built development, conveniently situated in one of Sidmouth's most sought after residential roads with the town centre and seafront being within a short stroll and offering an excellent range of facilities and services.

The accommodation has a spacious feel and has been beautifully maintained with feature vaulted ceilings to the majority of rooms.

Worthy of particular mention is the main open plan living space which is over 10 metres in length and has a full height window to one end with French doors and Juliette balcony take full advantage of the outlook.

The kitchen area is fitted with high quality Gaggenau units along with Corian worksurfaces and integrated appliances which comprise a split-level double oven, microwave, gas hob, cooker hood, dishwasher, fridge, freezer and washing machine. The kitchen also features a central island unit which offers further storage and workspace.





In addition to this is a mezzanine floor which is accessed via a beautiful oak staircase, the current owners having recently refurbished this area to create a large study/work area, having extensive bookcases, cupboards and two fitted desks.

The three bedrooms all feature vaulted ceilings, the main bedroom enjoying a dual aspect and having two sets of French doors and Juliette balcony, along with fitted wardrobes and an en suite shower room fitted with a modern white suite.

Both the main bedroom and guest bedroom which also has an en suite, open onto a large balcony which is large enough for a table and chairs. Bedroom three enjoys an easterly aspect, again having French doors with Juliette balcony and also having a range of fitted wardrobes, shelving and drawers.

In addition to the en suite shower rooms there is also a separate bathroom fitted with a bath, WC and wash basin and along with the shower rooms features underfloor heating.

The apartment is beautifully decorated throughout, features Karndean flooring to the main living space and reception hall and the bathrooms are all beautifully tiled. Gas central heating is installed along with double glazing which includes four Velux windows which are electronically operated with rain sensors.

The apartment is accessed via a superb atrium communal entrance which has modern staircases and passenger lift rising to all floors.

Approached via Manor Road, a block paved driveway leads to a visitors parking area along with a secure undercover garage where there is an allocated parking space for this apartment. The communal grounds are well stocked and beautifully kept.







TENURE The property is leasehold, held on a 999 year lease from 2007, however we understand that the freehold is vested within the management company of which all apartment owners hold an equal share.

MAINTENANCE We understand that there is an annual maintenance charge, paid half yearly, of £4,471 (correct at March 2026). Service charges are liable to change, you should therefore check the position before making a commitment to purchase.

OUTGOINGS We are advised by East Devon District Council that the council tax band is G.

POSSESSION Vacant possession on completion.

EPC: C

REF: DHS02447

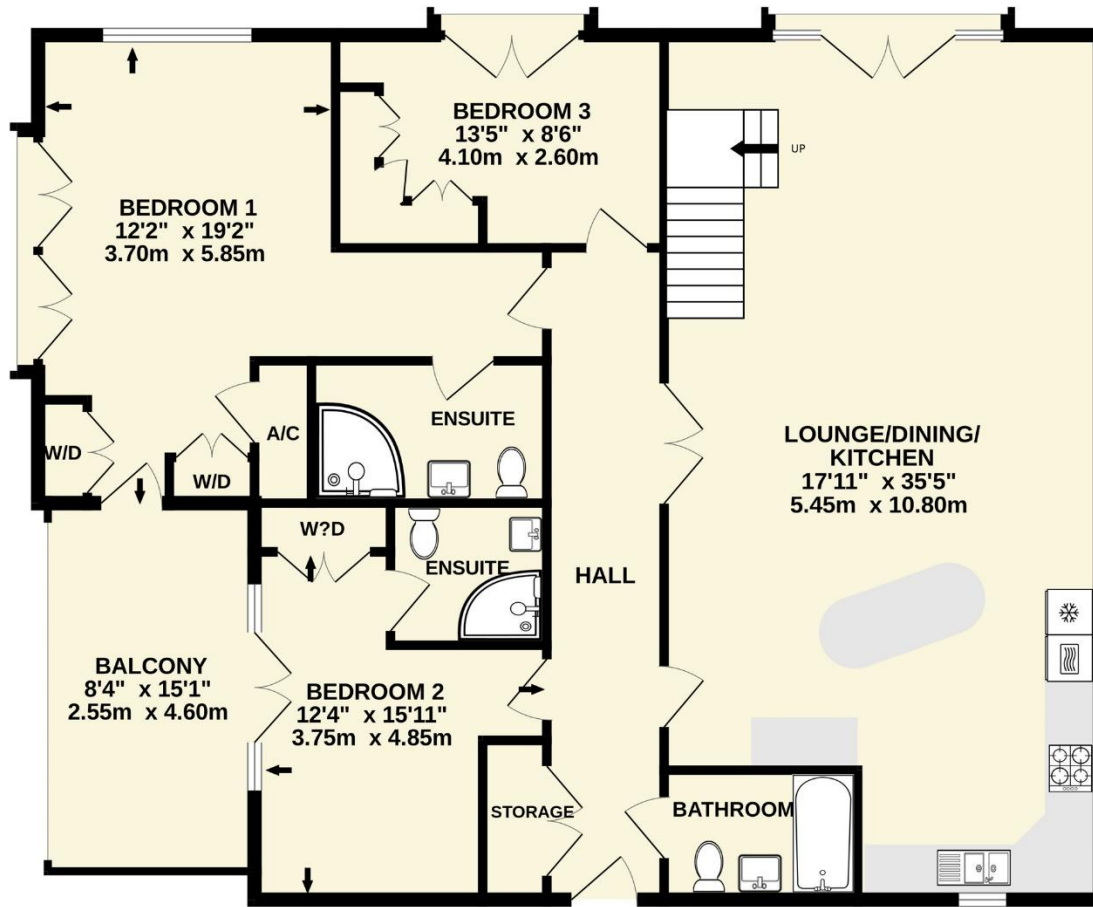
SERVICES Mains gas, electricity, water and drainage are connected.

BROADBAND & MOBILE Standard and Superfast Broadband are available in the area with estimated download speeds of up to 80 mbps. Good outdoor and variable indoor mobile coverage is predicted from EE, Vodafone, Three and O2. Information supplied by Ofcom - March 2026.

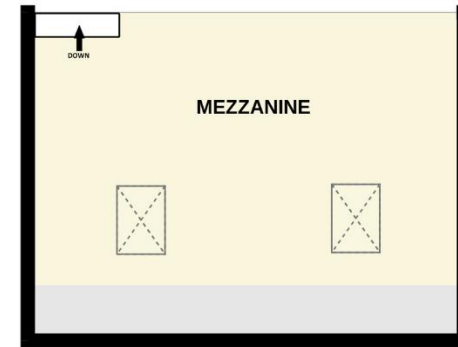


IMPORTANT NOTICE If you request a viewing of a property, we the Agent will require certain pieces of personal information from you in order to provide a professional service to both you and our clients. The personal information you provide may be shared with our client, but will not be passed to third parties without your consent. The Agent has not tested any apparatus, equipment, appliance, fixtures, fittings or services and so cannot verify that they are in working order, or fit for the purpose. A Buyer is advised to obtain verification from their solicitor and/or surveyor. References to the tenure/outgoings/charges of a property are based on information supplied by the seller - the Agent has not had sight of the title documents. A Buyer is advised to obtain verification from their solicitor. Items shown in photographs/floor plans are not included unless specifically mentioned within the sale particulars. They may be available by separate negotiation. Buyers must check the availability of any property and make an appointment to view before embarking on a journey to view a property.

SECOND FLOOR
1420 sq.ft. (131.9 sq.m.) approx.



240 sq.ft. (22.3 sq.m.) approx.



TOTAL FLOOR AREA : 1660 sq.ft. (154.2 sq.m.) approx.

Whilst every attempt has been made to ensure the accuracy of the floorplan contained here, measurements of doors, windows, rooms and any other items are approximate and no responsibility is taken for any error, omission or mis-statement. This plan is for illustrative purposes only and should be used as such by any prospective purchaser. The services, systems and appliances shown have not been tested and no guarantee as to their operability or efficiency can be given.
Made with Metropix ©2026



Tel: (01395) 516633

Email: reception@harrisonlavers.com

www.harrisonlavers.com

