



## Caxton Road, SW19

£630,000

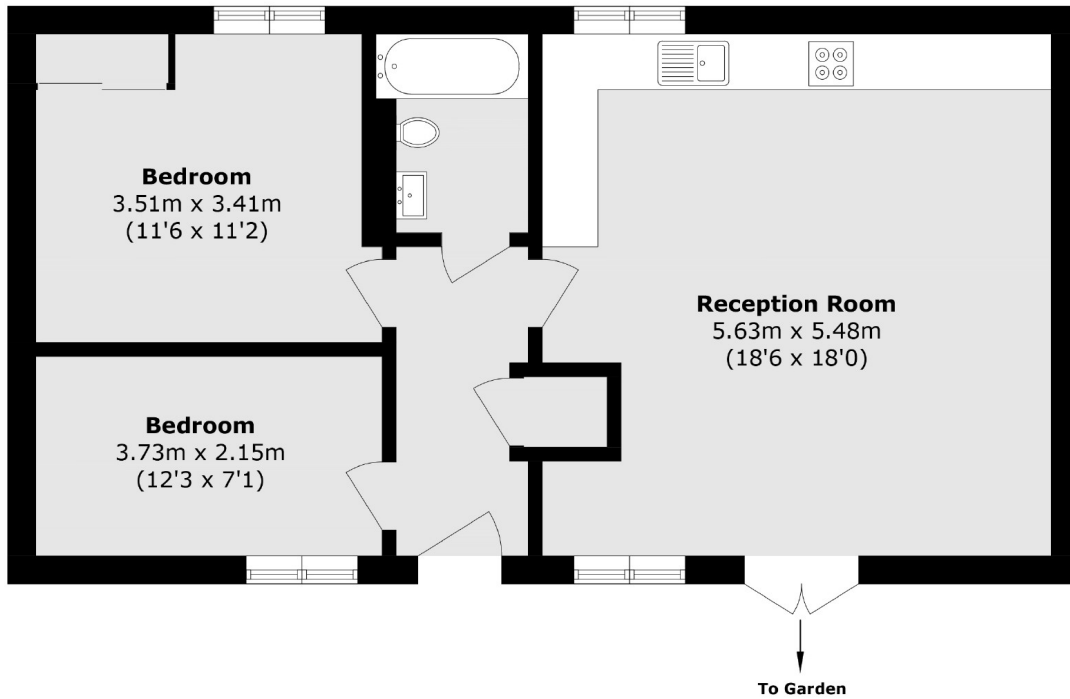
The jewel in the crown of this recently developed private, gated estate of apartments and single standing luxury units. Semi detached from the main building, with a courtyard garden, off street parking and vaulted ceilings.

Set along a gated, private entry road, off the beaten track, whilst in close proximity to Garfield Recreation Ground. Close to the Thames Link, London is just moments away.

### Features

- Two Double Bedrooms
- EV Car Charging
- Private Courtyard Garden
- Semi Detached Unit
- Gated Luxury Development
- No Onward Chain

# Caxton Road, London, SW19



Total area (approx.): 61.4 sq. m (660.9 sq. ft)