

**HS HAIR & SON**

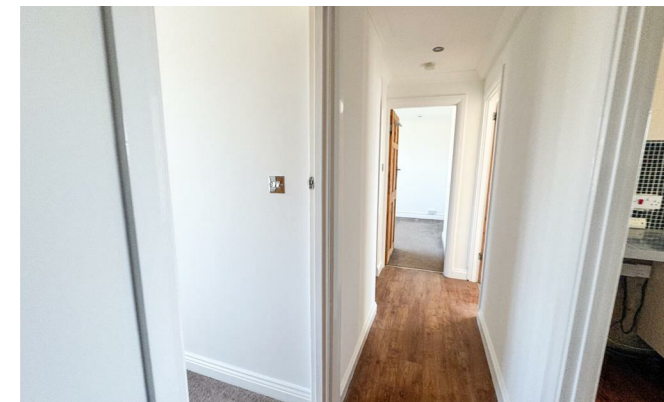


## Leigh Heath Court

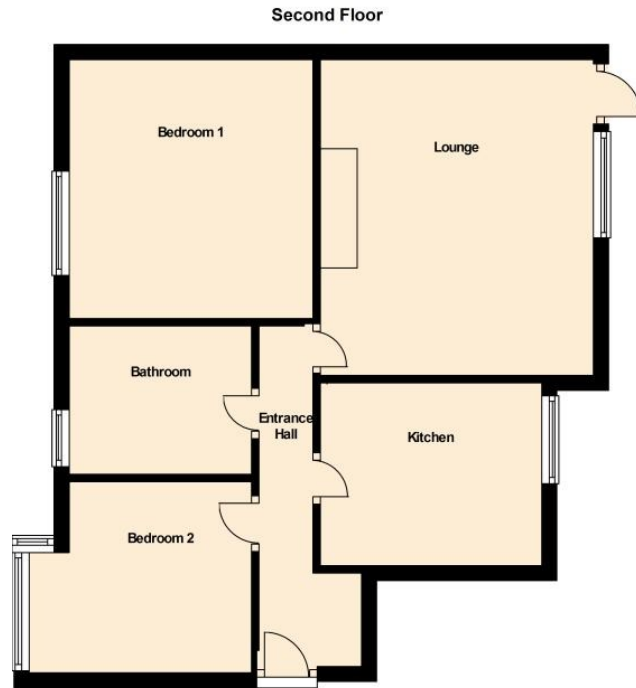
London Road, Leigh-on-Sea SS9 2QP

- PURPOSE BUILT SECOND FLOOR FLAT
  - BATHROOM/WC
  - KITCHEN WITH COOKER
  - GAS RADIATOR HEATING
  - SMALL BALCONY
- TWO BEDROOMS
  - LOUNGE WITH SMALL BALCONY
  - DOUBLE GLAZING
- CLOSE TO TRANSPORT LINKS AND LEIGH BROADWAY
- NO ONWARD CHAIN

Guide Price £230,000 Leasehold - Share of Freehold



Local Authority **Southend on Sea Borough Council**  
Council Tax Band **B**  
EPC Rating **D**



Total area: approx. 49.2 sq. metres (529.5 sq. feet)

**Lettings Office**  
190 London Road, Southend-On-Sea,  
Essex, SS1 1PJ

**Contact**  
01702 34 11 77  
lettings@hairandson.co.uk  
<https://hairandson.co.uk/>

Agents Note: Whilst every care has been taken to prepare these particulars, they are for guidance purposes only. All measurements are approximate and for general guidance purposes only and whilst every care has been taken to ensure accuracy, they should not be relied upon and potential buyers/tenants are advised to recheck the measurements.

