



**Price**  
**£475,000**

**Freehold**

5x  2x  1x 

**Crossways,  
Sittingbourne, Kent,  
ME10**

**OVER 60?**

Secure this property  
for up to **59% less!**

*Wards*  
Helping you move forwards



## Main features

- Semi-detached family home with driveway for multiple cars
- Landscaped garden with summer house (used as gym/storage)
- Ideal family space with open plan kitchen/diners
- Close to local schools and shops
- Wonderful opportunity for a family home in a sought-after location

## Accommodation

### GROUND FLOOR

Entrance Hall

Bedroom 5/Play Room: 14'1 x 6'3 (4.30m x 1.91m)

Lounge: 11'7 x 11'4 (3.53m x 3.46m)

Utility Area: 10'3 x 5'7 (3.13m x 1.70m)

Kitchen/Diner: 18'4 x 17'6 (5.59m x 5.34m)

Bedroom 4: 8'2 x 6'3 (2.49m x 1.91m)

Shower Room

### FIRST FLOOR

Landing

Bedroom 1: 12'7 x 11'4 (3.84m x 3.46m)

Bedroom 2: 11'2 x 9'4 (3.41m x 2.85m)

Bedroom 3: 8'8 x 8'0 (2.64m x 2.44m)

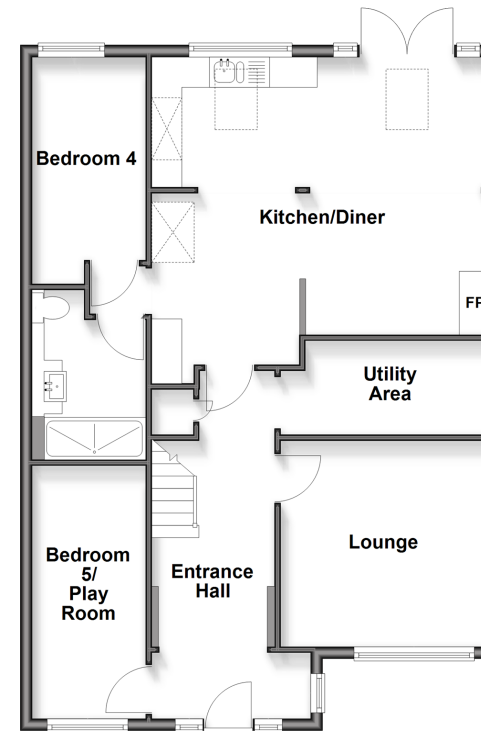
Bathroom

### OUTSIDE

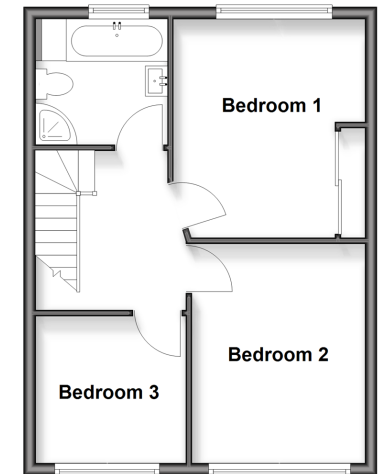
Driveway

Rear Garden

**Ground Floor**  
Approx. 79.6 sq. metres (856.7 sq. feet)



**First Floor**  
Approx. 40.1 sq. metres (432.0 sq. feet)



**Call Sittingbourne - 01795 427272 ■ [wardsofkent.co.uk](http://wardsofkent.co.uk)**

■ Through a Homewise Home For Life Plan people aged 60+ can secure this property for up to 59% less, by purchasing a Lifetime Lease



11739064/20260330/JS/MC1