



Ivydale Road, SE15

£495,000

Set on the first floor of an elegant Victorian building on the ever desirable Ivydale Road, this beautifully presented two bedroom period conversion offers a refined balance of classic character and contemporary comfort.

Ivydale Road remains one of the most sought after residential streets in the area, positioned within easy reach of the independent shops, cafés and restaurants of both Nunhead and Peckham Rye. Excellent transport connections are available from nearby Nunhead and Peckham Rye stations, providing swift access into London Bridge, Victoria, Blackfriars and the City.

Features

- Two Double Bedrooms
- Victorian Conversion
- Beautifully Presented
- Share of Freehold
- Close to Nunhead Station
- Ideal for First Time Buyers



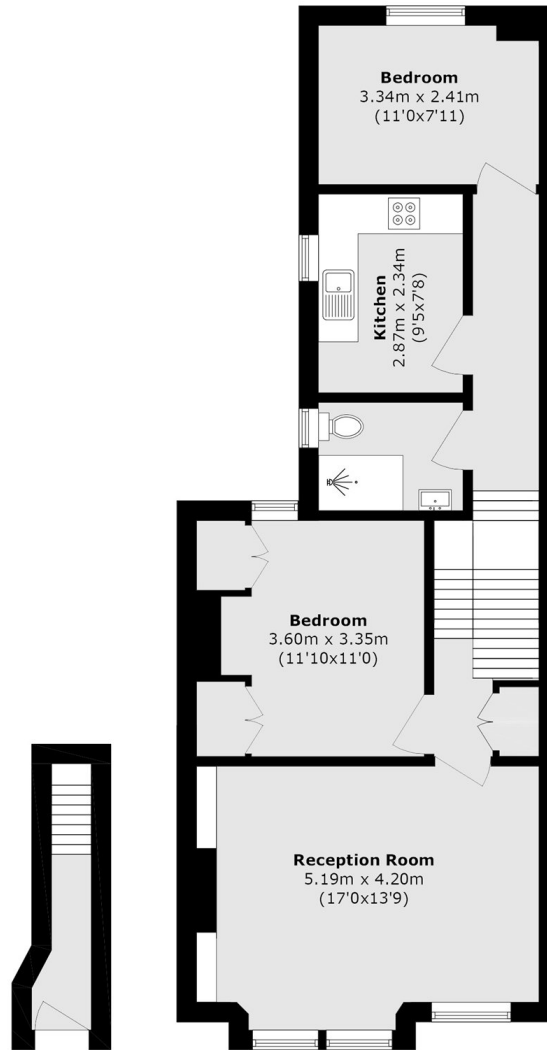
Ivydale Road, SE15

The property has been maintained in excellent condition throughout, with bright, well proportioned interiors that make immediate sense upon entry. A generous reception room forms the heart of the home, offering a calm and inviting setting for both everyday living and entertaining.

Two well sized double bedrooms provide comfortable accommodation, each thoughtfully arranged to maximise space and light. The overall finish of the flat is exceptional, allowing a buyer to move straight in without the need for further works.



Ivydale Road, London, SE15



Ground Floor

First Floor

Total area (approx.): 66.6 sq. m (716.9 sq. ft)