



23 Heath End Road, Flackwell Heath

£529,000



Robertsons

23 Heath End Road

Flackwell Heath, Buckinghamshire

An individual detached home close to the village shops and Carrington Junior/Infant school. Entrance hall, Cloakroom, Kitchen/breakfast room, Bedroom 1 with en suite shower room, Two further bedrooms, Bathroom, Gas central heating, Double glazing, Garage and parking, Garden.

Council Tax band: E

Tenure: Freehold

Entrance hall

Radiator, stairs to first floor with under stairs storage cupboard, window to side

Cloakroom

Low level W.C., wash hand basin with mixer tap, radiator, part tiled walls, window to side

Sitting/Dining room

Attractive fireplace with fitted electric fire, radiator, double doors to garden

Kitchen

Fitted with a range of eye and base level units incorporating sink unit with mixer tap and drainer, built in Electrolux oven, fitted four ring hob with extractor over, space for fridge/freezer, space and plumbing for washing machine, built in Zanussi dishwasher, fitted breakfast bar, tiled flooring, part tiled walls, down lighters, bay window to front





First floor

Landing

Bedroom 1

Radiator, window to front

En suite shower room

Shower cubicle housing fitted shower unit, low level W.C., wash hand basin with mixer tap, heated towel rail, tiled walls

Bedroom 2

Radiator, window to rear

Bedroom 3

Radiator, built in double wardrobe, airing cupboard housing foam clad hot water cylinder and shelved storage, window to front

Bathroom

White suite comprising panelled bath with mixer tap and fitted shower over, low level W.C., wash hand basin with mixer tap and cupboards under, low level W.C., heated towel rail, tiled walls, window to front

Front garden/Parking

A block paved driveway provides parking for two cars

Garage

With metal up and over door, light and power, wall mounted Glow worm gas fired central heating boiler, door to garden

Rear garden

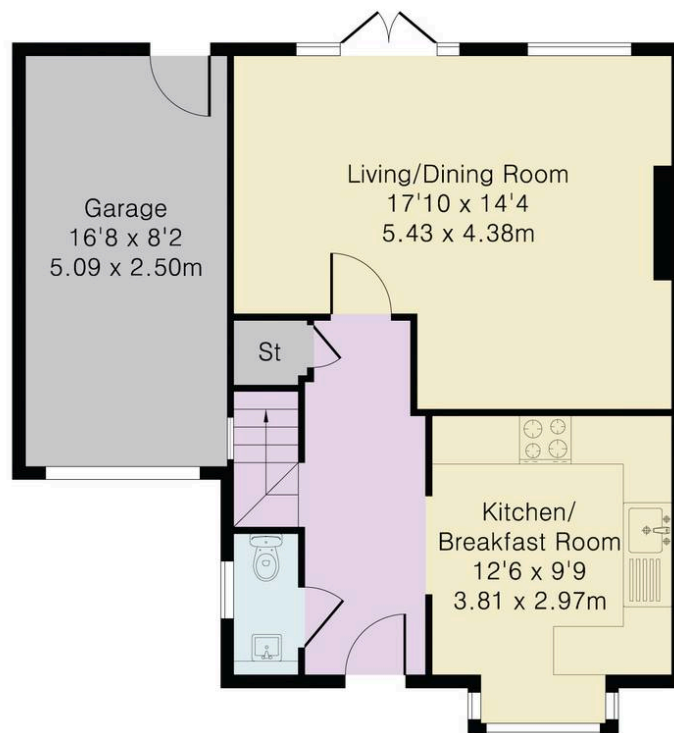
A secluded, mainly paved garden which enjoys a sunny south/westerley aspect. The garden is enclosed by panelled fencing and extends to 16' x 31'.



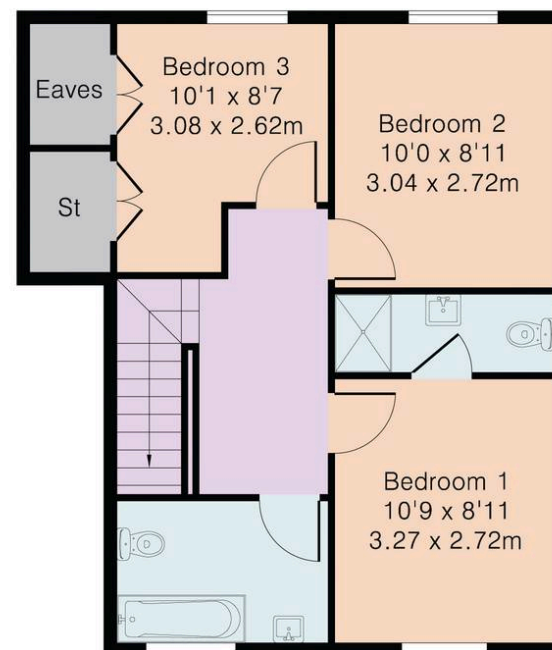
Approximate Gross Internal Area 1065 sq ft – 99 sq m

Ground Floor Area 600 sq ft – 56 sq m

First Floor Area 465 sq ft – 43 sq m



Ground Floor



First Floor



Robertsons