



Manor Road, Mundesley NR11 8AX

welcome to

Manor Road, Mundesley

A CHARMING and versatile FOUR BEDROOM family home located in the peaceful coastal village of Mundesley, offering easy access to local amenities and scenic beaches. With the added benefit of NO ONWARD CHAIN!

Don't miss out - Call the office today!



This characterful four-bedroom residence is perfectly positioned in the tranquil seaside village of Mundesley. This home seamlessly blends traditional charm—featuring polished original floorboards and original decorative fireplaces—with the practicalities of modern family life.

The heart of the home is the expansive kitchen and breakfast room, where a feature brick fireplace houses a range cooker, and French doors pull the outdoors in. Whether you're hosting in the bay-fronted lounge or enjoying a quiet moment in the separate dining room, the layout offers exceptional flexibility. Upstairs, the principal suite offers a private sanctuary with sea glimpses and a modern en-suite, while a luxurious family bathroom features a classic claw-foot bath.

Outside, the south-facing rear garden is a sun-drenched, low-maintenance retreat, perfect for alfresco dining after a day on Mundesley's award-winning beaches. With local craft bakeries and scenic coastal walks just moments away and having the added benefit of NO ONWARD CHAIN this property is not to be missed.

Call the office and book your viewing today!

Lounge

Original fireplace, radiator, double-glazed bay window to front aspect, original wood flooring and ceiling rose.

Dining Room

Original fireplace and skirting boards, double-glazed window to rear aspect, original wood flooring, and ceiling rose.

Kitchen

Fitted kitchen with a range of wall and base units with work surfaces over, Rangemaster cooker set in to brick opening, built in dishwasher, space for

fridge/freezer, steps to outside courtyard garden, partially tiled flooring.

Utility

WC

WC, wash hand basin.

First Floor

Bedroom Two

Double-glazed window to rear aspect, radiator, carpeted flooring and original ceiling rose.

Bedroom Three

Original ceiling rose, double-glazed window, carpeted flooring.

Bedroom Four

Original ceiling rose, double-glazed window to front aspect, radiator, wood flooring.

Bathroom

WC, roll top bath, wash hand basin, storage cupboard, double-glazed window and original ceiling rose.

Second Floor

Master Bedroom

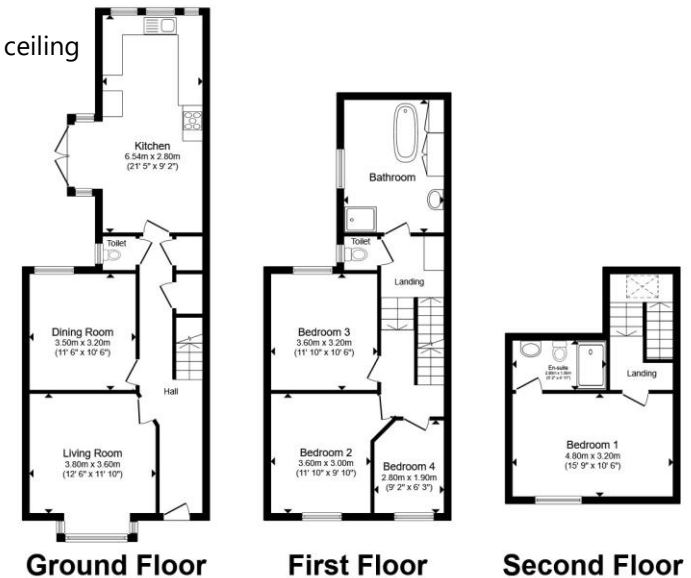
Wood flooring, radiator, double-glazed window and ceiling rose.

Ensuite

Tiled shower, heated towel rail, radiator, gas combi boiler.

Outside

Low maintenance courtyard garden with paving. Private, L-Shaped garden catching morning to evening sunshine and large garden shed.



Total floor area 143.4 m² (1,544 sq.ft.) approx

This floor plan is for illustrative purposes only. It is not drawn to scale. Any measurements, floor areas (including any total floor area), openings and orientation are approximate. No details are guaranteed, they cannot be relied upon for any purpose and they do not form part of any agreement. No liability is taken for any error, omission or misstatement. A party must rely upon its own inspection(s). Powered by www.propertybox.io



view this property online williamhbrown.co.uk/Property/NWM110110



welcome to

Manor Road, Mundesley Norwich

- Characterful four-bedroom coastal home blending original features with modern family living
- Spacious kitchen/breakfast room with feature brick fireplace, range cooker and French doors
- Flexible living accommodation including bay-fronted lounge and separate dining room
- Principal bedroom with sea glimpses plus modern en-suite and luxury family bathroom with claw-foot bath
- South-facing low-maintenance garden in a prime Mundesley location, NO ONWARD CHAIN

Tenure: Freehold EPC Rating: D

Council Tax Band: C

offers in the region of

£325,000



Please note the marker reflects the postcode not the actual property

view this property online williamhbrown.co.uk/Property/NWM110110



Property Ref:
NWM110110 - 0006

1. MONEY LAUNDERING REGULATIONS Intending purchasers will be asked to produce identification documentation at a later stage and we would ask for your co-operation in order that there is no delay in agreeing the sale. 2. These particulars do not constitute part or all of an offer or contract. 3. The measurements indicated are supplied for guidance only and as such must be considered incorrect. Potential buyers are advised to recheck measurements before committing to any expense. 4. We have not tested any apparatus, equipment, fixtures or services and it is in the buyers interest to check the working condition of any appliances. 5. Where an EPC, or a Home Report (Scotland only) is held for this property, it is available for inspection at the branch by appointment. If you require a printed version of a Home Report, you will need to pay a reasonable production charge reflecting printing and other costs. 6. We are not able to offer an opinion either written or verbal on the content of these reports and this must be obtained from your legal representative. 7. Whilst we take care in preparing these reports, a buyer should ensure that his/her legal representative confirms as soon as possible all matters relating to title including the extent and boundaries of the property and other important matters before exchange of contracts.

William H Brown is a trading name of Sequence (UK) Limited which is registered in England and Wales under company number 4268443, Registered Office is Cumbria House, 16-20 Hockliffe Street, Leighton Buzzard, Bedfordshire, LU7 1GN. VAT Registration Number is 500 2481 05.


william h brown



01692 402861



NorthWalsham@williamhbrown.co.uk



16 Market Street, NORTH WALSHAM, Norfolk,
NR28 9BZ



williamhbrown.co.uk