

Rolfe East



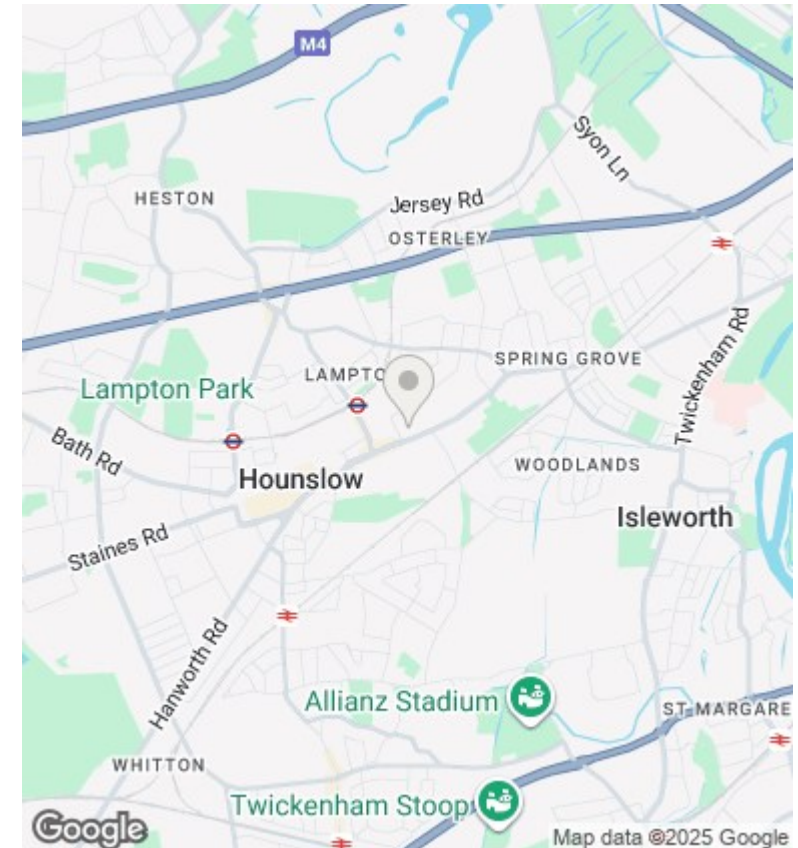
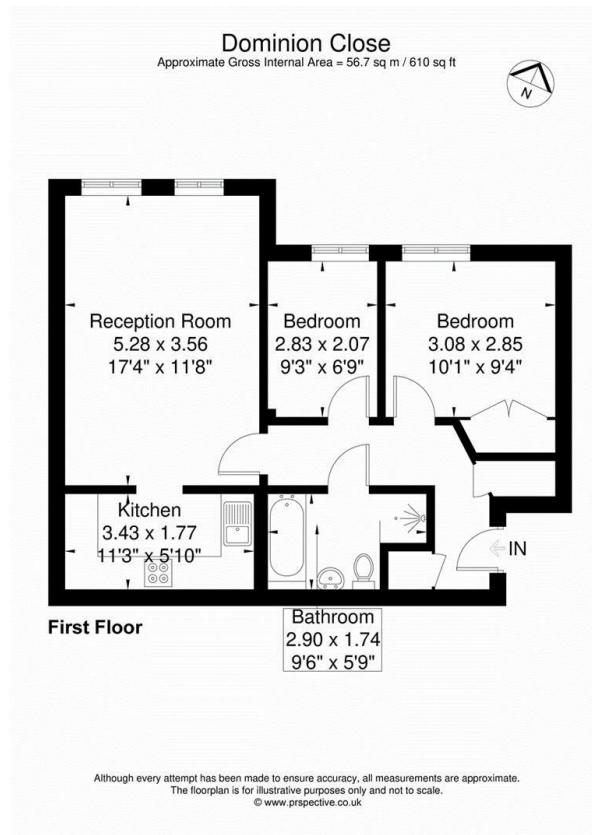
Dominion Close, Hounslow, TW3 1PJ

£285,000

- Two bedroom flat
- Double glazed throughout
- Convenient for Piccadilly line
- Allocated gated parking
- Long lease
- Chain free sale

289 Northfield Avenue, Ealing, W5 4XB
020 8579 1111

northfieldslettings@rolfe-east.com
<https://www.rolfe-east.com/>



Directions

Viewings

Viewings by arrangement only. Call 020 8579 1111 to make an appointment.

Council Tax Band

C

EPC Rating:

Energy Efficiency Rating		
	Current	Potential
Very energy efficient - lower running costs		
(92 plus) A		
(81-91) B		
(69-80) C		
(55-68) D		
(39-54) E		
(21-38) F		
(1-20) G		
Not energy efficient - higher running costs		
England & Wales	EU Directive 2002/91/EC	