

RAINBOW REID



ESTATE AGENTS || LETTING AGENTS || PROPERTY MANAGEMENT



24A Elsham Road , Leytonstone, E11 3JH

Situated on the first floor, this beautifully refurbished apartment offers a well-balanced layout combined with stylish, contemporary finishes. At its heart is a bright open-plan living space designed for both comfort and practicality, while the spacious double bedroom provides a calm and private retreat. Offered chain-free, this home is ideal for buyers seeking a straightforward move. Conveniently positioned close to Leytonstone High Road and the open green spaces of Wanstead Flats, the location perfectly blends day-to-day convenience with a relaxed, outdoor lifestyle.

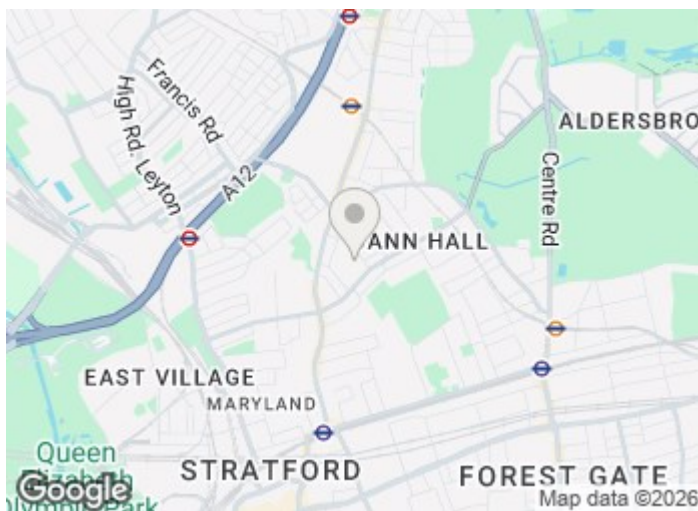
Extended lease (148 years remain)
Council tax band B
Service charge: TBC
Ground rent: TBC

Offers Over £315,000

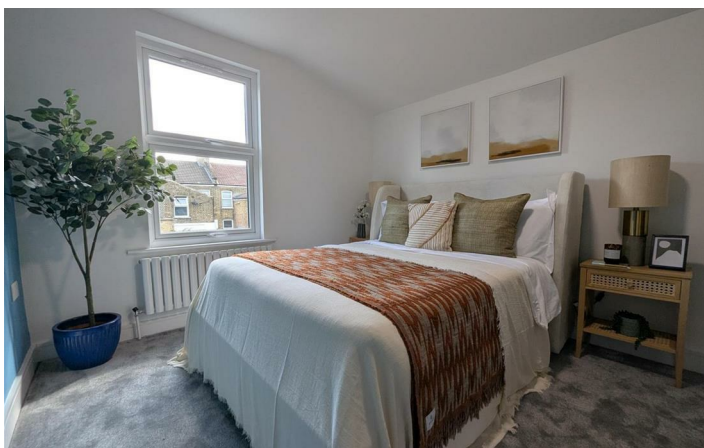
24A Elsham Road , Leytonstone, E11 3JH



- Fully refurbished one bedroom flat
- Open plan living/dining
- Offered with no upper chain
- Excellent local amenities and transport links nearby
- Stylish kitchen and bathroom
- Loft space and licence for alteration in place



Directions



Floor Plan



Total Area: 46.4 m² ... 499 ft²

All measurements are approximate and for display purposes only

These particulars, whilst believed to be accurate are set out as a general outline only for guidance and do not constitute any part of an offer or contract. Intending purchasers should not rely on them as statements of representation of fact, but must satisfy themselves by inspection or otherwise as to their accuracy. No person in this firm's employment has the authority to make or give any representation or warranty in respect of the property.

