

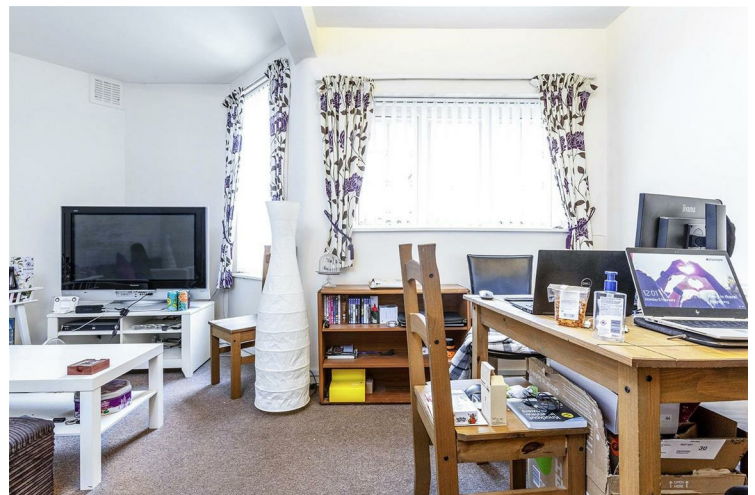


## Boyfield Street SE1

£3,000 PCM

This bright three bedroom apartment is located on Boyfield Street SE1, situated between Borough, Southwark & Waterloo. Positioned on the ground floor, the property comprises a spacious living room, a large separate kitchen, three double bedrooms & a modern bathroom. Offered furnished.

Call the lettings department to reserve a viewing 0207 015 1360.




- Three Double Bedrooms • Ground Floor • Great Location • Furnished • Council Tax - Band C (£1,417 p/yr) • Minimum Contract - 12 Months







Energy Efficiency Rating		
	Current	Potential
<i>Very energy efficient - lower running costs</i>		
(92 plus) <b>A</b>		
(81-91) <b>B</b>		
(69-80) <b>C</b>		
(55-68) <b>D</b>	58	65
(39-54) <b>E</b>		
(21-38) <b>F</b>		
(1-20) <b>G</b>		
<i>Not energy efficient - higher running costs</i>		
<b>England &amp; Wales</b>	EU Directive 2002/91/EC 	

Agents Note: Whilst every care has been taken to prepare these particulars, they are for guidance purposes only. All measurements are approximate and are for general guidance purposes only and whilst every care has been taken to ensure their accuracy, they should not be relied upon and potential buyers/tenants are advised to recheck the measurements

Borough Lettings  
230 Borough High Street  
London  
SE1 1JX

020 7015 1360  
enquiries@leonardleese.com  
www.leonardleese.com

