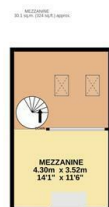




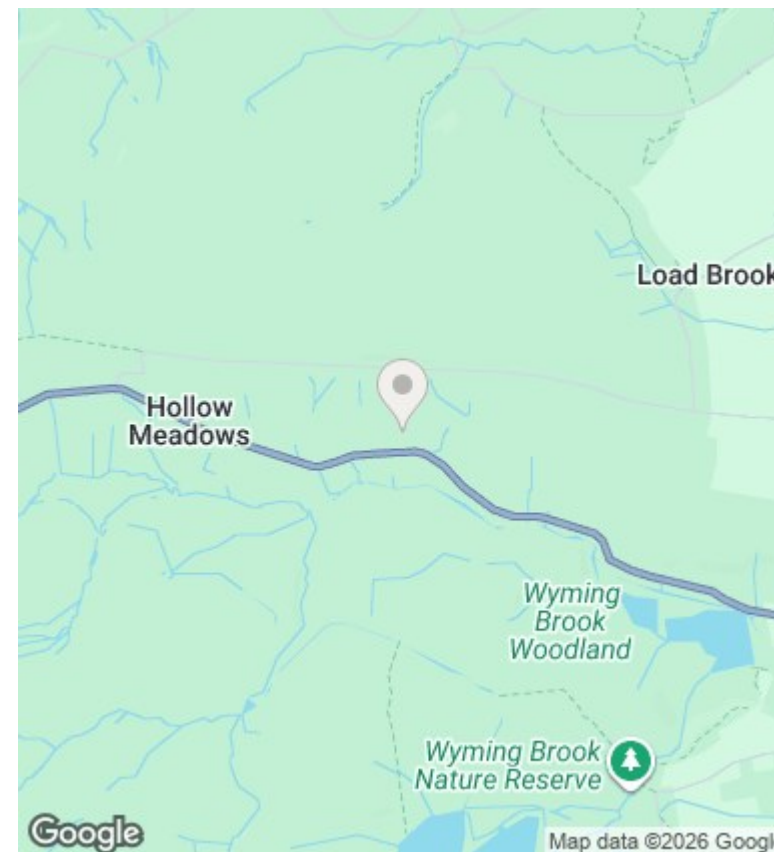
1 Hollow Meadows Mews, Hollow Meadows, Sheffield, S6 6GJ

Offers Over £850,000

- Stunning home full of character
- Six bedrooms and two bathrooms
- Off street parking, garage and communal car park
- Incredible countryside on the doorstep
- Two reception rooms
- Approx 1 acre rear garden
- Unique small development
- Beautiful dining kitchen
- Incredible views
- Short drive to Crosspool and Stannington



TOTAL FLOOR AREA: 288.0 sq.m. (3100 sq.ft.) approx.
 Measurements are approximate. Not to scale. Illustrative purposes only.
 Made with Metropix (2025)



Directions

Viewings

Viewings by arrangement only. Call 01142 687777 to make an appointment.

Council Tax Band

B

EPC Rating:

C

Energy Efficiency Rating		
	Current	Potential
<i>Very energy efficient - lower running costs</i>		
(92 plus) A		
(81-91) B		85
(69-80) C	71	
(55-68) D		
(39-54) E		
(21-38) F		
(1-20) G		
<i>Not energy efficient - higher running costs</i>		
England & Wales	EU Directive 2002/91/EC	