

**TG**

SALES & LETTINGS



# Sowthistle Drive, Hardwicke, Gloucester Gloucestershire GL2 4DX

**£350,000**

- Stunning Family Home
- Upgraded Kitchen
- Two En-suites and Family Bathroom
- Finished to a High Standard
- Detached Garage and Parking for up to 3 Cars
- Four Double Bedrooms
- Landscaped Rear Garden
- Popular Location close to Amenities & School

A BEAUTIFULLY PRESENTED FOUR DOUBLE BEDROOM TOWNHOUSE WITH UPGRADED KITCHEN, LANDSCAPED GARDEN AND PARKING FOR THREE VEHICLES – SITUATED IN A POPULAR HARDWICKE LOCATION.

Located on the ever-popular Sowthistle Drive in Hardwicke, this exceptionally well presented four double bedroom townhouse offers spacious and versatile accommodation arranged over three floors, making it an ideal family home.

The property has been thoughtfully improved by the current owners, most notably with a stylish upgraded kitchen featuring modern units, quality worktops and integrated appliances. The ground floor also benefits from a welcoming entrance hall and a generous living space with access out to the rear garden.

Upstairs, the home boasts four well-proportioned double bedrooms, providing ample space for growing families or those working from home. Two of the bedrooms benefit from their own en-suite shower rooms, in addition to a well-appointed family bathroom, offering both comfort and convenience.

Externally, the landscaped rear garden has been designed for low maintenance enjoyment, providing an attractive space for relaxing or hosting guests. Laid to beautiful Porcelain tiles and high-grade artificial lawn leading to the detached garage.

To the front, the property is partially enclosed by mid-level hedging and lawn.

Hardwicke is a highly sought-after area, offering excellent access to Gloucester, the M5 motorway and a range of local amenities including shops, schools and countryside walks. This fantastic home combines space, style and practicality and early viewing is highly recommended.

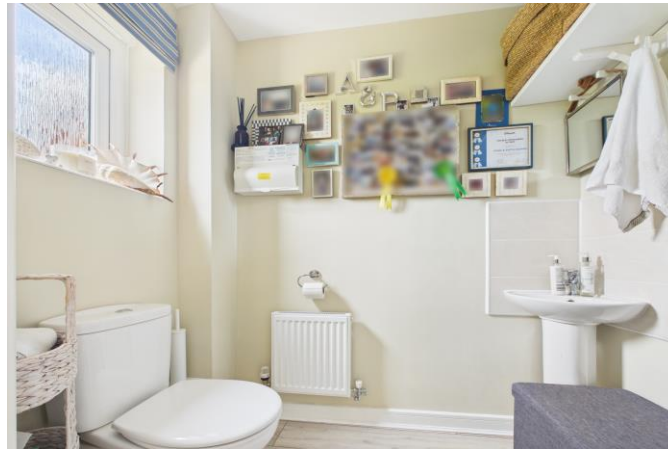


## **Tenure Freehold**

**Local Authority** Gloucester

**Services** Electric, Mains Gas, Mains Drainage and Water are all believed to be connected to the property.

**Council tax band D**





**Head Office**  
 TG Sales & Lettings  
 6 Blacksmith Lane  
 Churchdown  
 Gloucestershire  
 GL3 2EU  
**Tel:** 01452 311776  
**Email:** info@tgres.co.uk  
**Website:** www.tgres.co.uk



Score	Energy rating	Current	Potential
92+	A		95 A
81-91	B	86 B	
69-80	C		
55-68	D		
39-54	E		
21-38	F		
1-20	G		

T G Sales & Lettings and any parties they are acting for hereby give you notice that: These details are for guidance only and cannot guarantee the accuracy of any description, dimension, condition or any required permission for occupation and use. It is not company policy to test any services or appliances in properties offered for sale and these should be verified by the purchaser's solicitors. T G Sales & Lettings will not be liable for any loss arising from the use of these details. No responsibility is taken for any errors, omissions or misstatements within these particulars. It should not be assumed that the property has all the necessary planning, building regulation, lease terms, costs, freehold conditions or other consents. These particulars do not form any part of any offer or contract and must not be relied upon as statements or representations of fact. Buyers are advised to seek advice from their legal representation. T G Sales & Lettings is a limited liability partnership registered in England and Wales. Registered Number: 9763381 Registered Office: 6 Blacksmith Lane, Gloucester, GL3 2EU.