

martin-thornton.com
01484 508000



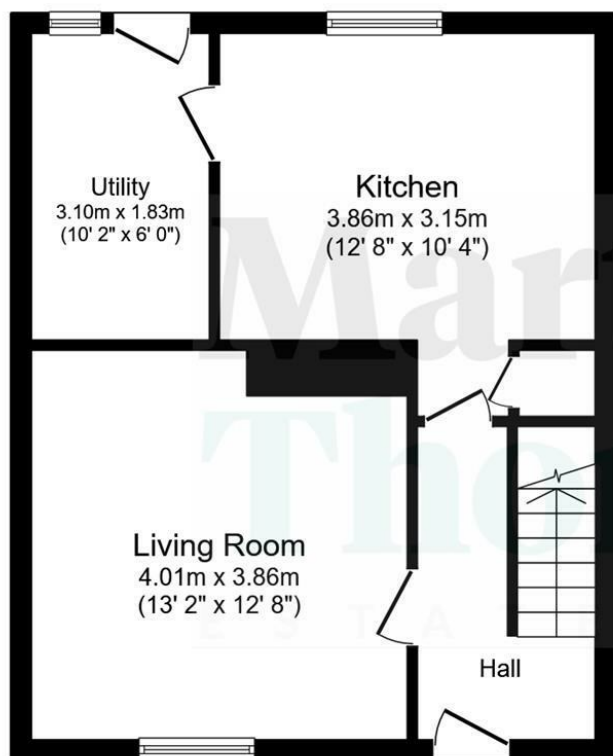
Staynton Crescent, Bradley Huddersfield,

Offers in the region of
£180,000

This three-bedroom townhouse in a block of three has a fresh interior with an upgraded kitchen and bathroom. It offers ideal family accommodation and features a gas-fired central heating system and uPVC double-glazing. The accommodation comprises an entrance hallway, living room, kitchen with some integrated appliances and an adjoining utility room. On the first floor, there are three bedrooms and an upgraded and contemporary bathroom. Externally, there are front and rear lawned gardens. The rear garden also has a timber decked area and can be a real sun trap. This property is offered with the advantage of no onward chain and an inspection is encouraged to appreciate the presentation and accommodation on offer.

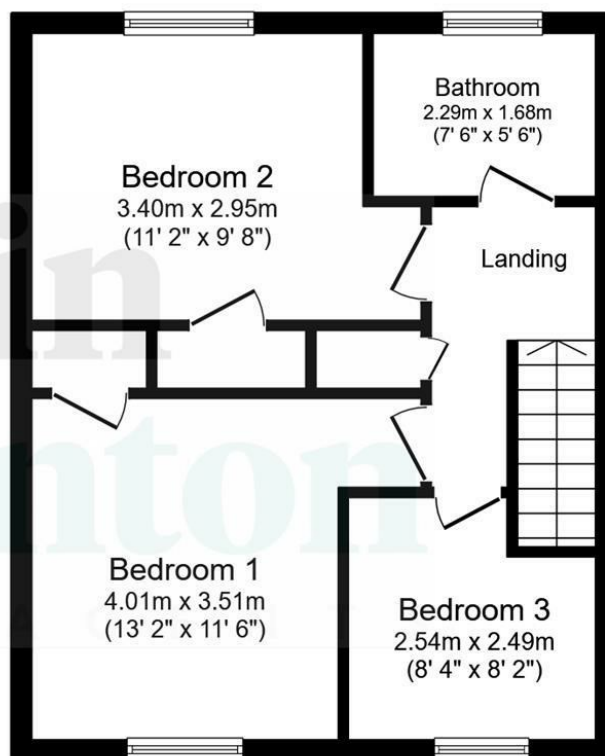
Staynton Crescent, Bradley Huddersfield,

Floorplan



Ground Floor

Floor area 42.0 sq.m. (452 sq.ft.)



First Floor

Floor area 42.0 sq.m. (452 sq.ft.)

Total floor area: 83.9 sq.m. (904 sq.ft.)

This floor plan is for illustrative purposes only. It is not drawn to scale. Any measurements, floor areas (including any total floor area), openings and orientations are approximate. No details are guaranteed, they cannot be relied upon for any purpose and do not form any part of any agreement. No liability is taken for any error, omission or misstatement. A party must rely upon its own inspection(s). Powered by www.Propertybox.io

Staynton Crescent, Bradley Huddersfield,

Details



Entrance Hallway

An external timber door gives access to the entrance hallway. The initial portion has a mat style carpet and, beyond this, large polished tiles that continue into the rear dining kitchen. Within the hallway, a staircase rises to the first floor accommodation, with useful storage beneath. There is a radiator and a door leading into the living room.



Living Room

This good-sized reception room is positioned at the front of the property and has a uPVC window overlooking the garden. It has crisp neutral decor, grey carpeting, plenty of space for furniture and a radiator.



Staynton Crescent, Bradley Huddersfield,

Details



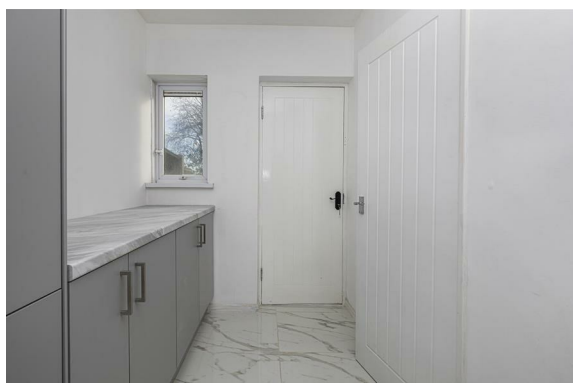
Kitchen

The kitchen is positioned at the rear of the property and has been redesigned and updated in more recent times. It has wall cupboards and base units and working surfaces with tiled splashbacks. Integrated appliances include an oven and hob with a canopy style filter hood. There is a tall larder style cupboard that could accommodate a fridge freezer and space for freestanding appliances, such as a washing machine and a dishwasher. Concealed is the boiler for the central heating system. The room can accommodate a small bistro style table. There is ceiling downlighting, a radiator, a rear uPVC window and a door leading to a utility.



Utility

This room has matching floor tiling and units to those of the kitchen and a large worktop. There is a rear uPVC window and an external timber door leading to the garden.



Staynton Crescent, Bradley Huddersfield,

Details



First Floor Landing

From the hallway, a staircase with a glass panelled balustrade rises to the first floor landing. There is a useful storage cupboard.



Bedroom One

This double bedroom is positioned at the front of the property and has neutral decor and grey carpeting. There is a uPVC window, plenty of space for furniture and a useful walk-in storage cupboard, which could be used as a wardrobe. There is also a radiator.



Staynton Crescent, Bradley Huddersfield,

Details



Bedroom Two

This bedroom is positioned at the rear of the property and is light and bright, due to the decor and uPVC window. There is a radiator and a good-sized storage cupboard, which could be used as a wardrobe.



Bedroom Three

This single bedroom is positioned at the front of the property and has neutral decor and grey carpeting. There is a uPVC window and a radiator.



Staynton Crescent, Bradley Huddersfield,

Details



House Bathroom

The bathroom has been redesigned and updated. The white three-piece suite comprises a bath with a curved shower screen, a waterfall style shower fitting and an additional hand-held shower attachment; a hand basin with storage below and a low-level WC. There is tiling to the walls and floor, and aqua panelling to the ceiling, with downlighting. The room has a chrome ladder style radiator and an opaque uPVC rear window.



External Details

In front of the property, there is a lawned garden and pathway with a perimeter privet hedge. Neighbouring properties have created off-road parking at the expense of a front garden, but this would be subject to any necessary permissions or consents. At the rear of the property, there is a large timber decked patio area, which can be a real sun trap, accessed from the door within the utility. Timber decked steps lead down to a pathway with lawns on either side.



Tenure

The vendor has informed us that the property is Freehold.

Staynton Crescent, Bradley Huddersfield,

Directions

