

SIMPLE LIFE

SIMPLE LIFE

First  
month's  
rent free!!

\*Offer available on selected  
plots and for a limited  
time only

## Belmont Place, Hindley Green, WN2

£1,275 PCM

FIRST MONTH'S RENT FREE!

Belmont Place is equidistant between Manchester and Liverpool, providing good access to regional road and rail networks with the nearest station Daisy Hill providing regular direct services to Manchester City Centre.

The welcoming central hallway of the Grantham sits in between the living room and the kitchen. A house designed with you in mind, the spacious lounge provides the perfect area to relax, whilst the dining/kitchen area provides a great place to spend time and entertain with its French windows opening on to the garden. A WC is conveniently situated off the hallway, completing the downstairs.

Upstairs, the house has a large master bedroom with fitted, mirrored wardrobes, and a further two bedrooms. A stylish family bathroom with a separate bath and shower provides the best of both worlds, whilst a storeroom on the landing provides a space to store bits and pieces.

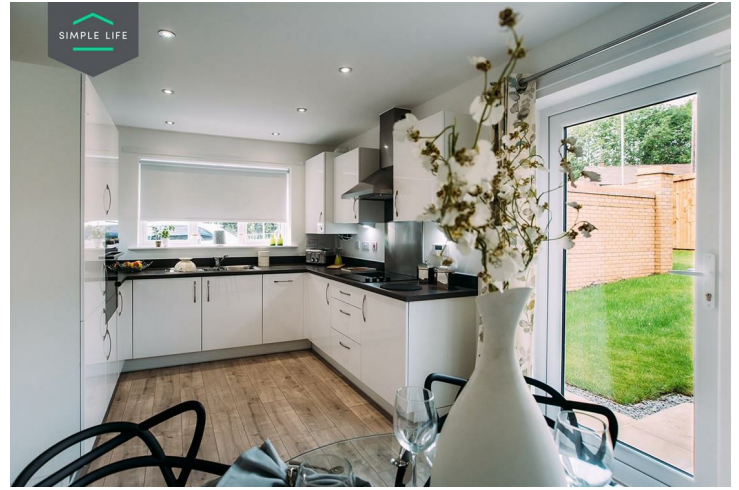
The site lies 2 miles from Leigh and its excellent retail and leisure provision including an Asda, Sainsburys and Cineworld.

With 52 primary and secondary schools rated 'Good' or 'Outstanding' by Ofsted within 3 miles, Belmont Place is ideally located for families, and benefits from additional retail complexes in Wigan.

To access the site, postcode WN2 4XS brings you to Bickershaw Lane / Smiths Lane with the development sitting to the right of a green play park.

Deposit: £1470  
Holding Deposit: £290  
Council Tax: B  
Unfurnished  
Available 7th May 2026





## Key Features

- Private driveway
- Fitted wardrobes to master bedroom
- Fridge freezer
- Oven and hob
- Dark ash style worktops
- Security alarm system
- Dishwasher
- Washing/drying machine
- Light wash wood effect flooring
- Modern, white kitchen units

## Location

