

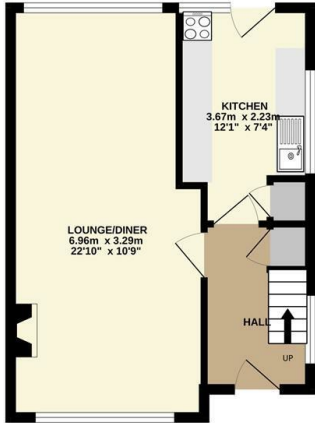


## 9 St. Albans Drive, Sheffield, S10 4DL

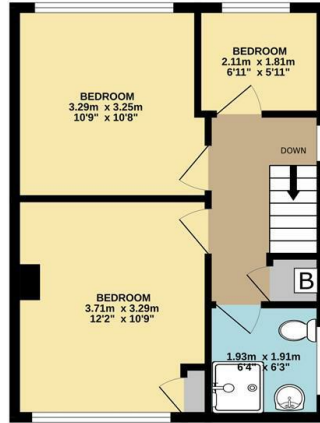
Offers Over £350,000

- No onward chain
- Off street parking and detached garage
- Within catchment area for popular schools
- Council tax band C
- Semi-detached home
- Fantastic potential
- Walking distance to parks and stunning countryside
- Three bedrooms
- Quiet road
- Long leasehold

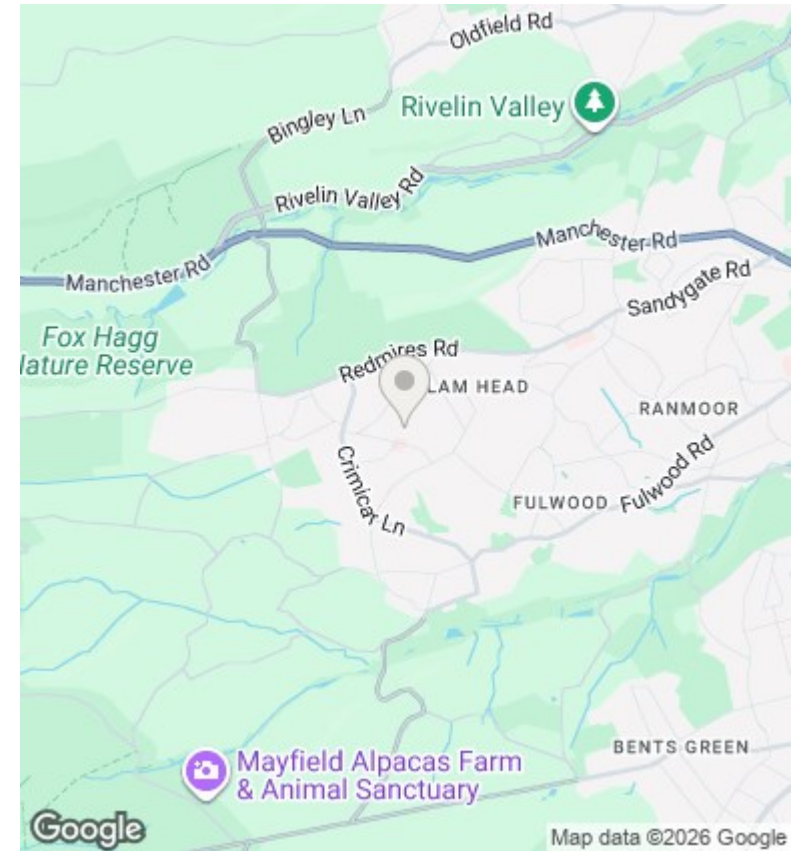
GROUND FLOOR  
44.2 sq.m. (476 sq.ft.) approx.



1ST FLOOR  
36.1 sq.m. (389 sq.ft.) approx.



TOTAL FLOOR AREA : 80.3 sq.m. (865 sq.ft.) approx.  
Measurements are approximate. Not to scale. Illustrative purposes only  
Made with Metrofax ©2026



## Directions

## Viewings

Viewings by arrangement only. Call 01142 687777 to make an appointment.

## Council Tax Band

C

## EPC Rating:

C

Energy Efficiency Rating		
	Current	Potential
<i>Very energy efficient - lower running costs</i>		
(92 plus) <b>A</b>		
(81-91) <b>B</b>		
(69-80) <b>C</b>	71	78
(55-68) <b>D</b>		
(39-54) <b>E</b>		
(21-38) <b>F</b>		
(1-20) <b>G</b>		
<i>Not energy efficient - higher running costs</i>		
<b>England &amp; Wales</b>	EU Directive 2002/91/EC	