



## Rodenhurst Road, SW4

£1,900 Per calendar month

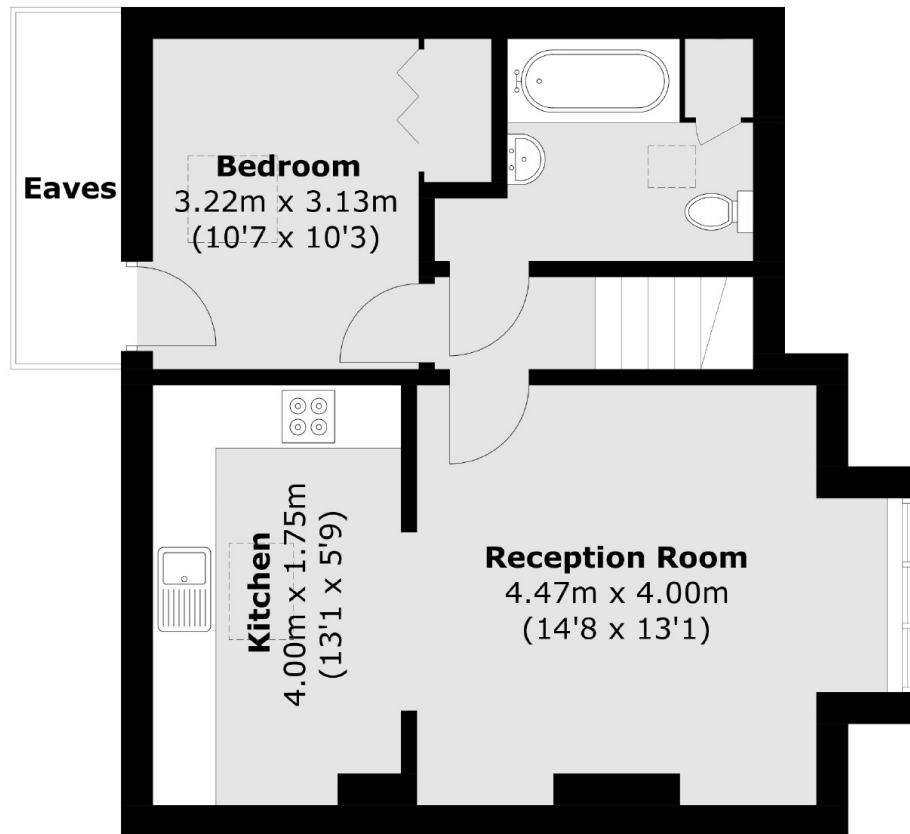
This well presented one bedroom flat is situated on the top floor of a converted house. The property has a spacious reception room with double glazed windows, a separate kitchen, a double bedroom with built-in storage and access to a communal garden.

Located just moments from the desirable Abbeville Road renowned for its culture of cafés, bars and restaurants and only a short walk to the open spaces of Clapham Common.

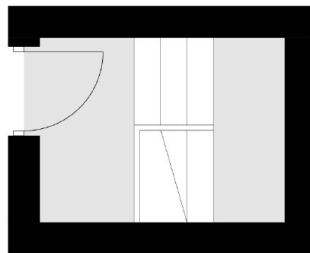
### Features

- Top Floor Flat
- Double Bedroom
- Separate Kitchen
- Wood Flooring
- Ample Storage
- Communal Garden

Rodenhurst Road,  
London, SW4



## Second Floor



## First Floor

Total area (approx.): 49.6 sq. m (533.9 sq. ft)  
(Excluding Eaves)