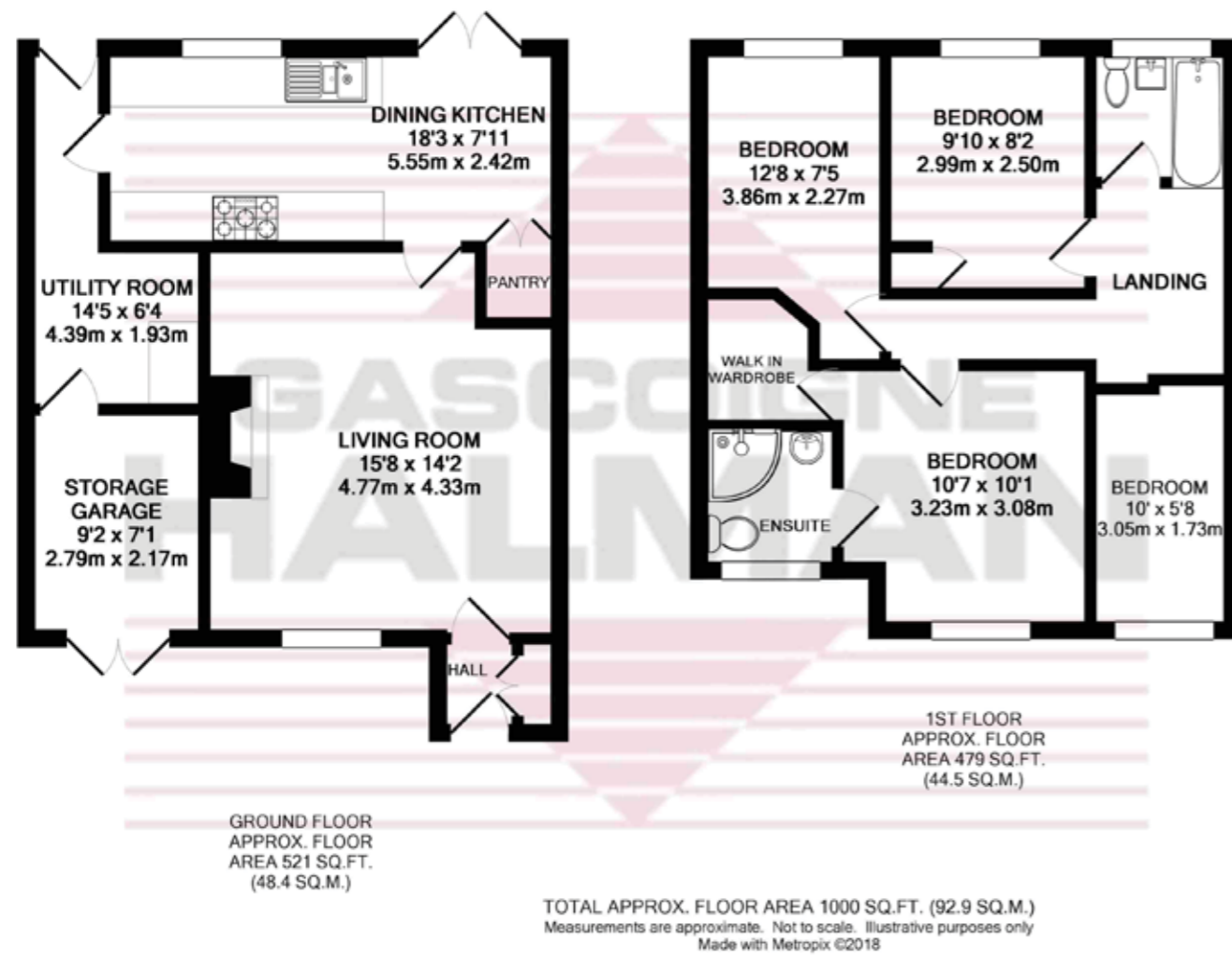


69 TURNBERRY DRIVE
 Wilmslow
£350,000



NOTICE
 Gascoigne Halman for themselves and for the vendors or lessors of this property whose agents they are give notice that: (i) the particulars are set out as a general outline only for the guidance of intending purchasers or lessees, and do not constitute, nor constitute part of, an offer or contract; (ii) all descriptions, dimensions, references to condition and necessary permissions for use and occupation, and other details are given in good faith and are believed to be correct but any intending purchasers or tenants should not rely on them as statements or representations of fact but must satisfy themselves by inspection or otherwise as to the correctness of each of them; (iii) no person in the employment of Gascoigne Halman has any authority to make or give any representation or warranty whatever in relation to this property.

THE AREAS LEADING ESTATE AGENCY

A highly IMPRESSIVE FOUR bedroom semi-detached family home which has been RENOVATED and EXTENDED to the highest possible standard throughout, with added benefit of a SOUTHERLY FACING REAR GARDEN and Indian Stone Driveway to the front.

Wilmslow
 40, Alderley Road, WILMSLOW SK9 1NY
 01625 536434 wilmslow@gascoignehalman.co.uk

gascoignehalman.co.uk



GASCOIGNE HALMAN

- Contemporary Re-fitted Bathroom and En-Suite Shower Room
- Highly Attractive Four Bedroom Semi Detached Home
- Fantastic Bespoke Kitchen With Granite Work Surfaces

- Electrics and Central Heating System All Recently Upgraded
- Indian Stone Driveway Laid in 2017
- Private Lawned Rear Garden With Decking Area

£350,000

69 TURNBERRY DRIVE

Wilmslow



DESCRIPTION

A highly attractive four bedroom, extended semi-detached home which has been internally refurbished to the highest possible standard throughout. It is situated close to Wilmslow within easy access of all the excellent local amenities and commuter links.

The internal accommodation has been carefully thought out, with an excellent layout offering four bedrooms, high quality bathroom, stunning family kitchen with separate utility room. The accommodation comprises in brief: entrance porch, spacious lounge, family/dining kitchen, utility room. To the first floor there are four good sized bedrooms, en-suite shower room, walk-in wardrobe and a stylish bathroom.

There is also an integral storage garage. To the front is a substantial driveway offering ample off road parking, whilst to the rear is a charming southerly facing garden with a decked entertaining area.

LOCATION

Conveniently situated within easy reach of Wilmslow town centre with its excellent range of shops and general services, restaurants and wine bars and good schools in the area for children of all ages, both State and Private. Wilmslow railway station is on the main line to London Euston and also provides a regular service to Manchester and surrounding districts. The North West motorway network is within a short drive as is Manchester Airport and the A34 Wilmslow by-pass which provides access to the stores at Handforth Dean and Cheadle. Wilmslow has a leisure centre and there are also a number of private sporting clubs in the area.

DIRECTIONS

Sat-Nav: SK9 2QW

TENURE

We are advised the tenure of the property is leasehold with a ground rent of £25 p.a. Subject to verification by solicitors.

SERVICES (NOT TESTED)

Services have not been tested and you are advised to make your own enquiries and/or inspections.

LOCAL AUTHORITY

Cheshire East. Property Band: C

VIEWING

Viewing strictly by appointment through the Agents.

EIGHTEEN NETWORKED OFFICES THROUGHOUT CHESHIRE, SOUTH MANCHESTER & THE HIGH PEAK



gascoignealman.co.uk

GASCOIGNE HALMAN