



Southfields Avenue, TW15

£600,000

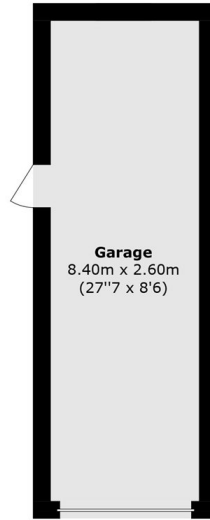
A spacious four bedroom semi-detached home, already extended to provide excellent family accommodation. Requiring some modernisation, it offers fantastic potential to create a superb home tailored to your own style and needs.

Southfields Avenue is a fantastic location in the heart of Ashford. With easy access to the M3 motorway and Ashford Station just over a mile away.

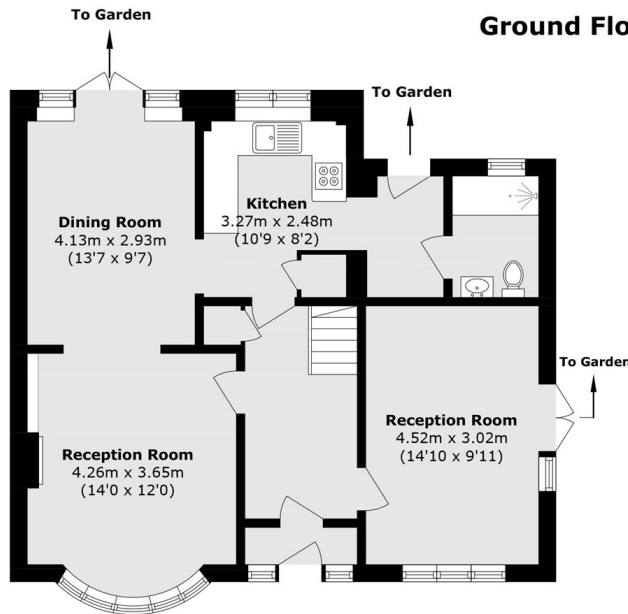
Features

- Semi-Detached
- Four Bedrooms
- Two Reception Rooms
- Private Garden
- Garage
- Chain Free

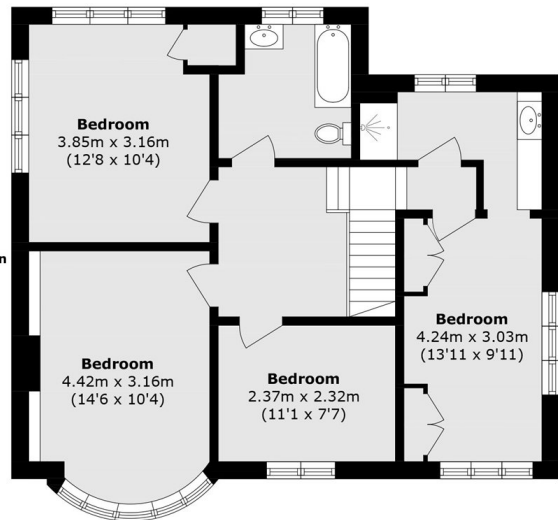
Southfields Avenue, Ashford, TW15



Garage
8.40m x 2.60m
(27'7" x 8'6")



Ground Floor



First Floor

Total area (approx.): 134.1 sq. m (1443.4 sq. ft)

Garage area (approx.): 21.8 sq. m (234.6 sq. ft)