



jordanfishwick

Clay Lane

£1,550 PCM



Clay Lane, Handforth, SK9 3NP

£1,550 PCM

This extremely attractive detached two double bedroom two-bathroom bungalow is situated within convenient reach of Handforth village centre and is just a short stroll to open countryside.

Located on this quiet lane the property enjoys a beautiful aspect over Styal golf course to the front.

With off road parking for several vehicles and with a detached garage this property is sure to be a popular choice.

Entrance Porch, entrance hallway, lounge with doors to fully enclosed rear garden, dining kitchen with doors to rear garden, electric hob and oven, fridge and freezer, dishwasher and washing machine, two double bedrooms both with fitted wardrobes and one with ensuite shower room, modern bathroom with shower over bath.

A driveway provides off road parking for several vehicles and leads to the single detached garage.

To the rear there is a fully enclosed sunny low maintenance garden

AVAILABLE END JULY PART FURNISHED - VIEWING RECOMMENDED

Contact Wilmslow 01625 536300 £1550.00pcm

COUNCIL TAX D

EPC D

LOCATION

Set on this quiet private lane on the Edge of Handforth village with views over the golf course this delightful two bedroom bungalow is sure to appeal

Jordan Fishwick Estate and Letting Agents Wilmslow office is located in a prime position central to the bustling and stylish town centre. With our impressive frontage it's impossible to miss our attractive office. Managed by Guy Grainger, Partner, who has been an Estate Agent since 1980, and has a wealth of local knowledge and experience

With busy sales and lettings departments all under the same roof along with our independent mortgage advisor on hand the Wilmslow branch has everything you need to help with your sales or lettings transactions.

Knowledgeable and friendly staff also compliment the range of services we offer and we are known throughout the Wilmslow area for our proactive approach in helping people find their dream home

DIRECTIONS

Head out of Handforth towards Heald Green and at the roundabout for the bypass take the first turning and then immediately take a left turn onto Clay Lane POSTCODE SK9 3NP



- TWO DOUBLE BEDROOMS
- ENSUITE TO MASTER
- EXTENDED KITCHEN AND LOUNGE
- SUNNY LOW MAINTENANCE REAR GARDEN
- GARAGE
- OFF ROAD PARKING
- COUNCIL TAX D
- EPC D

Postcode - SK9 3NP

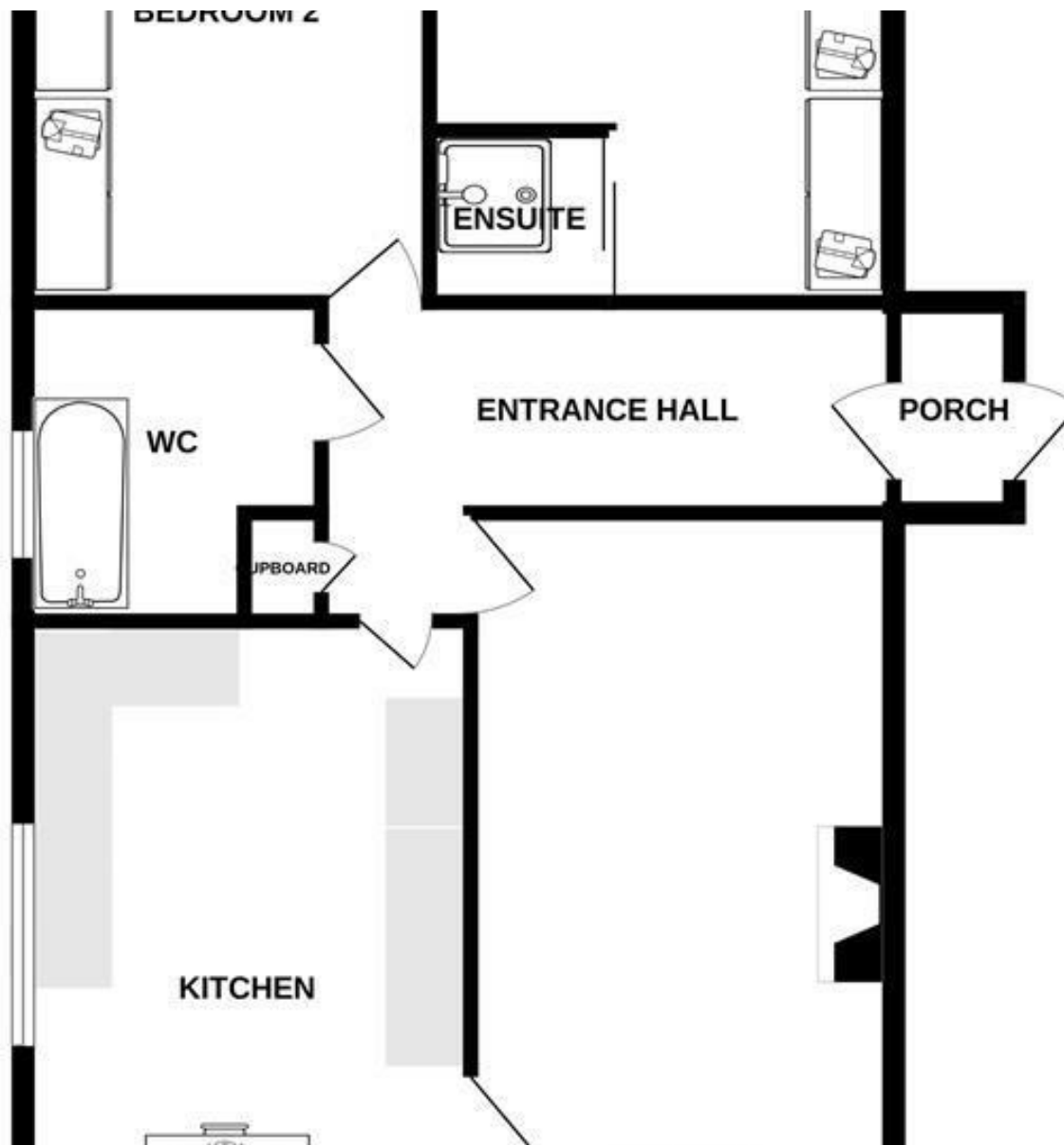
EPC Rating - D

Floor Area - sq ft

Local Authority - Cheshire East

Council Tax - D





These particulars are believed to be accurate but they are not guaranteed and do not form a contract. Neither Jordan Fishwick nor the vendor or lessor accept any responsibility in respect of these particulars, which are not intended to be statements or representations of fact and any intending purchaser or lessee must satisfy himself by inspection or otherwise as to the correctness of each of the statements contained in these particulars. Any floorplans on this brochure are for illustrative purposes only and are not necessarily to scale.

Offices at: Offices at Chorlton, Didsbury, Disley, Hale, Glossop, Macclesfield, Manchester Deansgate, Manchester Whitworth Street, New Mills, Sale, Wilmslow and Withington

01625 536300