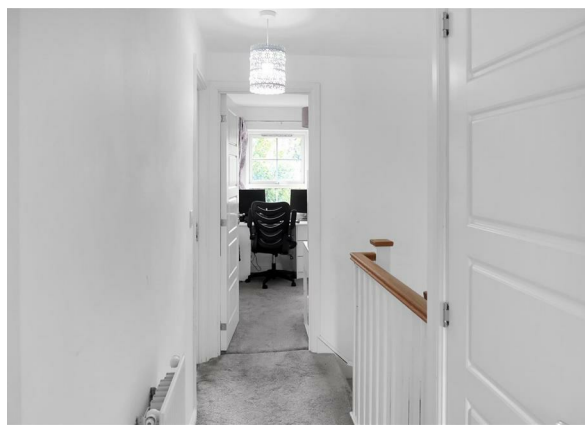
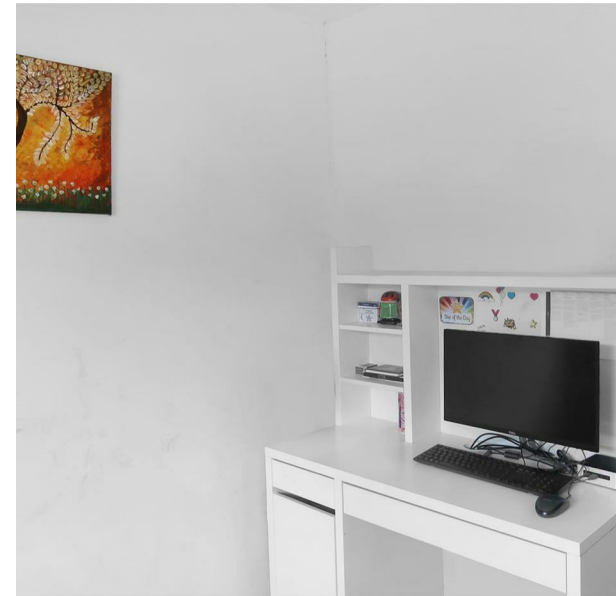
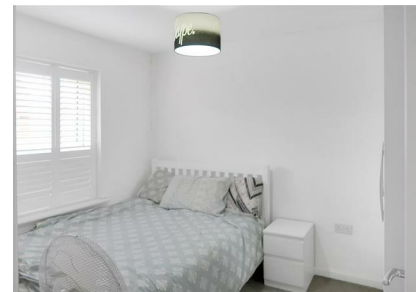


Robin Place, Allington, Maidstone, ME16 0ZT
£1,850 Per Calendar Month
Council Tax Band: D



Charming 3-Bedroom Home in Allington, Maidstone

Discover your new oasis in the heart of Allington, Maidstone. This beautiful 3-bedroom home in the tranquil community of Robin Place perfectly blends modern comfort and timeless elegance. As you step inside, you're greeted by a bright and welcoming living space, bathed in natural light.

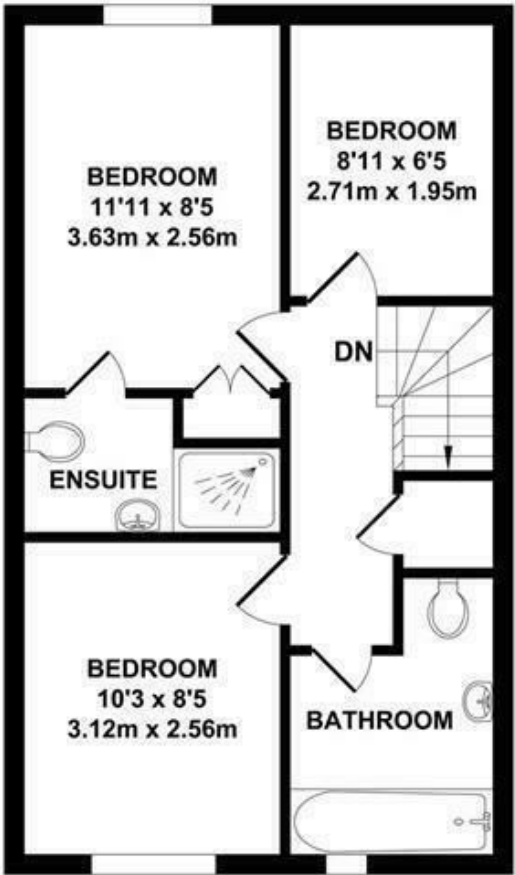
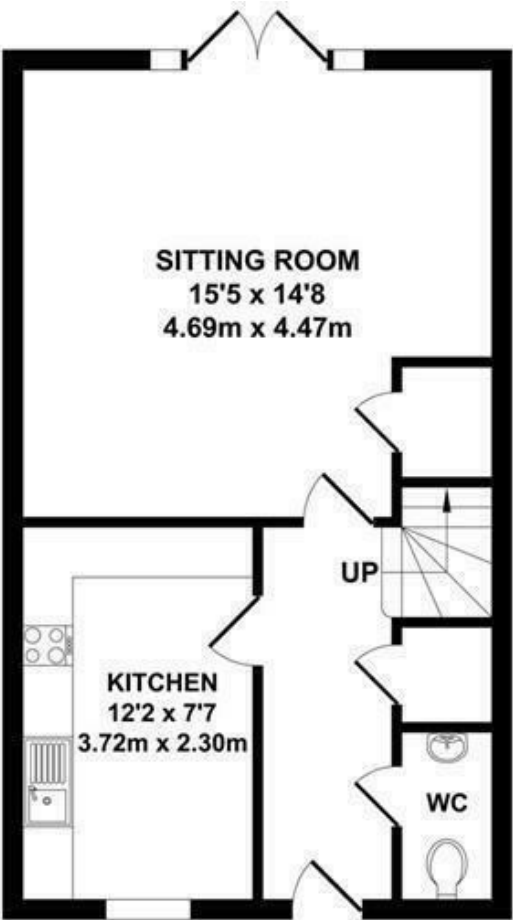
The contemporary kitchen is a dream for any culinary enthusiast, featuring sleek countertops, stainless steel appliances, and ample storage space for all your cooking essentials. The spacious master suite offers a luxurious retreat with an en-suite bathroom and plenty of closet space. The two additional bedrooms provide versatility, ideal for guests, children, or a home office.

Outside, the enchanting garden offers a serene escape, perfect for enjoying your morning coffee or hosting summer barbecues surrounded by lush greenery. Located in the desirable Allington area, this property is conveniently close to shops, restaurants, schools, and parks, with Maidstone town centre just a short drive away, offering a vibrant cultural scene and bustling nightlife.

Don't miss your chance to experience modern living at its finest in Robin Place. Schedule a viewing today and make this charming property your next home!



Open House Rochester



Energy Efficiency Rating		
	Current	Potential
Very energy efficient - lower running costs		
(92 plus) A		96
(81-91) B	83	
(69-80) C		
(55-68) D		
(39-54) E		
(21-38) F		
(1-20) G		
Not energy efficient - higher running costs		
England & Wales	EU Directive 2002/91/EC	