



COUNTRY
HOLMES

9 Denefield Close, Marple Bridge

£425,000

🛏️ 2 🚿 1 🚗 1



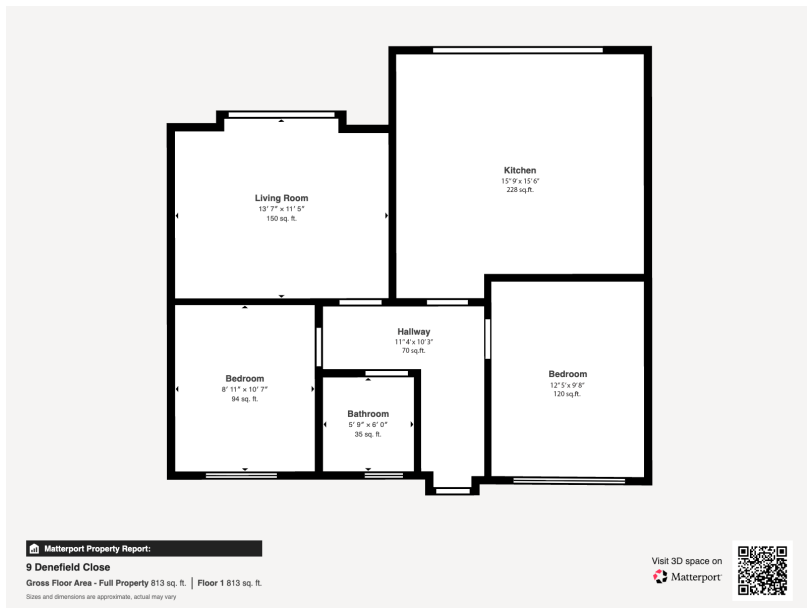
A beautifully presented new-build bungalow offering stylish, modern open-plan living, tucked away on a quiet cul-de-sac and coming to market with NO CHAIN.

Finished to a high standard throughout, the property benefits from underfloor heating and briefly comprises an entrance hallway with composite front door and LVT herringbone flooring, a spacious open-plan kitchen/dining area fitted with a range of base and wall units, central island with inset sink and mixer tap, integrated dishwasher, fridge freezer, oven and hob with extractor, with ample space for dining or seating and bifold doors opening onto the rear garden, a separate lounge with herringbone flooring and sliding doors to the garden, two well-proportioned double bedrooms with uPVC double-glazed windows, and a stylish fully tiled shower room featuring a walk-in shower enclosure, double vanity unit, mirror and WC.

Externally, the property boasts landscaped front and rear gardens with a patio area ideal for outdoor entertaining, along with a resin driveway providing off-road parking for up to four vehicles, making this an ideal move-in ready home.

Please note this property is split over 2 Titles. One Freehold and one Leasehold. The leasehold terms is 999 years from 25 March 1913.





- New Build
- Ample off-road parking
- Popular location
- Two bedrooms
- Landscaped rear garden
- Open plan living



Score	Energy rating	Current	Potential
92+	A	96 A	96 A
81-91	B		
69-80	C		
55-68	D		
39-54	E		
21-38	F		
1-20	G		