

**Stricklands Road, Stowmarket, IP14 1AW**

**welcome to**

## **Stricklands Road, Stowmarket**

This charming mid-terraced house in Stowmarket is chain-free! Features a cozy lounge with fireplace, separate dining room, kitchen & cloakroom. Upstairs offers three bedrooms, including an ensuite master. The enclosed garden features a patio, lawn & rear access. Ideal for families. Call to view now.

### **Accommodation**

#### **Entrance**

Part glazed front door, stairs to first floor, picture rail, wall lights, radiator and wooden laminate flooring.

#### **Lounge**

10' 10" max x 11' max ( 3.30m max x 3.35m max )  
Sash window to front, fireplace and surround, TV point, picture rail, radiator and carpeted flooring.

#### **Dining Room**

14' 3" max x 10' 1" max ( 4.34m max x 3.07m max )  
Sash window to rear, fireplace and surround, picture rail, wall lights, radiator, under stairs cupboard and wooden laminate flooring.

#### **Kitchen**

10' x 7' 1" ( 3.05m x 2.16m )  
Window and door to side, wall and base units with roll top work surfaces, stainless steel single sink with drainer and mixer tap, electric oven and hob with extractor fan, microwave, space for fridge freezer, spot lights, radiator and ceramic tiled flooring.

#### **Cloakroom**

Window to side and rear, pedestal hand wash basin, low level WC, 1/2 wooden panelled walls, radiator, space for washing machine and wooden laminate flooring.

#### **Landing**

Picture rail, rado rail and carpeted flooring.

#### **Bedroom One**

14' 3" x 10' ( 4.34m x 3.05m )  
Sash window to rear, picture rail, radiator, carpeted flooring and door to;

#### **En-Suite**

Frosted sash window to rear, bath unit with mixer tap, shower cubicle, wall mounted sink with mixer tap, spot lights, part tiled walls, built in cupboard, heated towel rail and ceramic tiled flooring.

#### **Bedroom Two**

7' x 8' 2" ( 2.13m x 2.49m )  
Sash window to front, fireplace, picture rail, radiator and carpeted flooring.

#### **Bedroom Three**

11' x 6' 11" ( 3.35m x 2.11m )  
Sash window to front, picture rail, built in cupboard, radiator and carpeted flooring.

#### **Rear Garden**

Fence & wall enclosed with side access gate, patio, shingle and lawn with timber shed and outside lighting and tap.



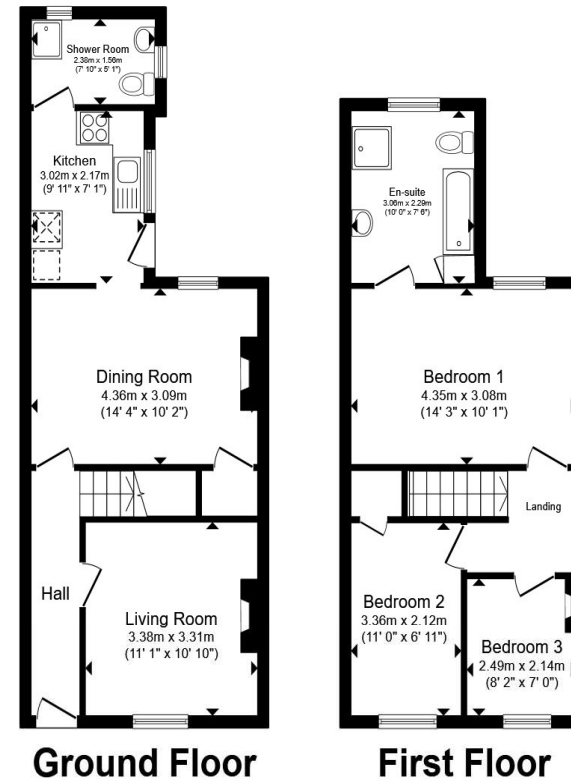
welcome to

## Stricklands Road, Stowmarket

- Mid Terraced Family Home
- No Onward Chain
- Three Bedrooms
- Bathroom/En-Suite
- Living Room & Separate Dining Room

Tenure: Freehold EPC Rating: D  
Council Tax Band: Deleted

**£240,000**



Total floor area 83.0 m<sup>2</sup> (894 sq.ft.) approx

This floor plan is for illustrative purposes only. It is not drawn to scale. Any measurements, floor areas (including any total floor area), openings and orientation are approximate. No details are guaranteed, they cannot be relied upon for any purpose and they do not form part of any agreement. No liability is taken for any error, omission or misstatement. A party must rely upon its own inspection(s). Powered by [www.propertybox.io](http://www.propertybox.io)



**view this property online** [williamhbrown.co.uk/Property/SMK104966](http://williamhbrown.co.uk/Property/SMK104966)



Property Ref:  
SMK104966 - 0006

1. MONEY LAUNDERING REGULATIONS Intending purchasers will be asked to produce identification documentation at a later stage and we would ask for your co-operation in order that there is no delay in agreeing the sale. 2. These particulars do not constitute part or all of an offer or contract. 3. The measurements indicated are supplied for guidance only and as such must be considered incorrect. Potential buyers are advised to recheck measurements before committing to any expense. 4. We have not tested any apparatus, equipment, fixtures or services and it is in the buyers interest to check the working condition of any appliances. 5. Where an EPC, or a Home Report (Scotland only) is held for this property, it is available for inspection at the branch by appointment. If you require a printed version of a Home Report, you will need to pay a reasonable production charge reflecting printing and other costs. 6. We are not able to offer an opinion either written or verbal on the content of these reports and this must be obtained from your legal representative. 7. Whilst we take care in preparing these reports, a buyer should ensure that his/her legal representative confirms as soon as possible all matters relating to title including the extent and boundaries of the property and other important matters before exchange of contracts.

William H Brown is a trading name of Sequence (UK) Limited which is registered in England and Wales under company number 4268443. Registered Office is Cumbria House, 16-20 Hockliffe Street, Leighton Buzzard, Bedfordshire, LU7 1GN. VAT Registration Number is 500 2481 05.

  
william h brown



**01449 614459**



[stowmarket@williamhbrown.co.uk](mailto:stowmarket@williamhbrown.co.uk)



10 Wilkes Way, STOWMARKET, Suffolk, IP14 1DE



[williamhbrown.co.uk](http://williamhbrown.co.uk)