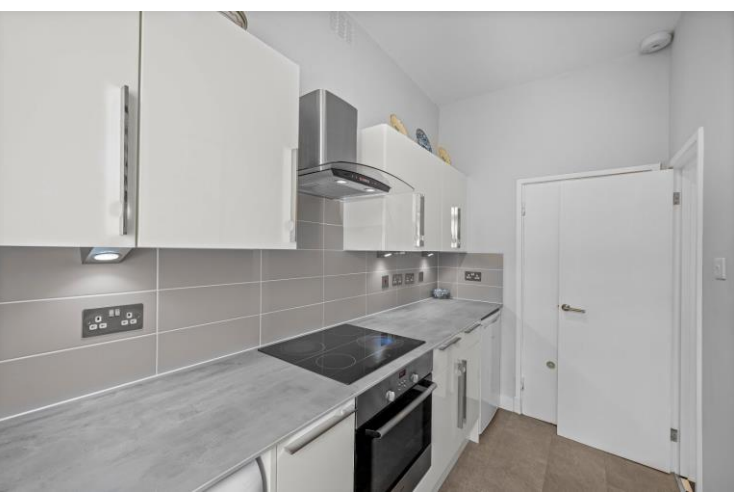




Orsett Terrace
London, W2





A bright and well-presented one bedroom second floor period conversion, set within a sought after W2 address.

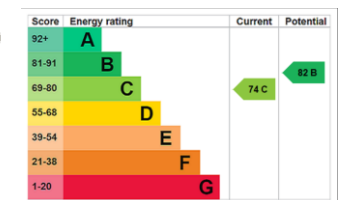
The property offers well balanced accommodation comprising a spacious reception room with good natural light, a separate kitchen, a double bedroom and a bathroom. The layout is practical and well proportioned, making it ideal for both owner occupiers and investors alike.

Further benefits include access to a communal garden, providing a pleasant outdoor space for residents.

Orsett Terrace is ideally located for the amenities of Queensway and Westbourne Grove, with a wide selection of shops, cafés and restaurants nearby. Hyde Park and Kensington Gardens are within easy reach, along with excellent transport links including Bayswater (Circle & District lines), Queensway (Central line), Paddington (National Rail and Elizabeth line) and Royal Oak (Hammersmith & City line).

- Second floor flat
- 487 sq. ft
- One double bedroom
- Communal gardens
- 2.85m high ceilings
- Spacious reception
- Bright and well proportioned
- Separate kitchen
- Period conversion
- Close to Connaught Village
- Sought after W2 location

Asking Price £525,000



Tenure: Leasehold 81 years 8 months
Service Charge: £1662 per annum
Ground Rent: £10 per annum
Local Authority: City of Westminster
Council Tax Band: C

Chestertons Hyde Park & Marylebone Sales

40 Connaught Street
 London
 W2 2AB

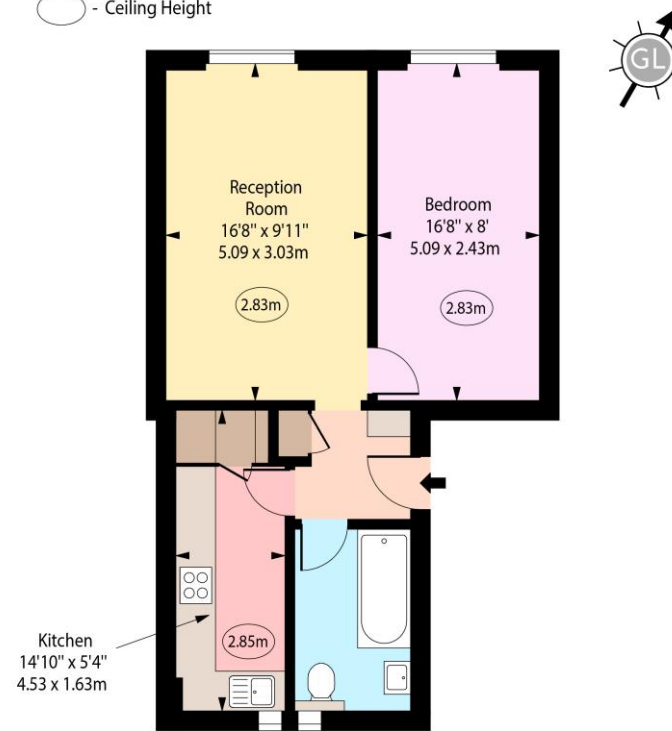
hydepark@chestertons.co.uk

020 7298 5900

chestertons.co.uk

Orsett Terrace, W2

○ - Ceiling Height



Second Floor

Approx Gross Internal Area 487 Sq Ft - 45.24 Sq M

Every attempt has been made to ensure the accuracy of the floor plan shown. However, all measurements, fixtures, fittings, and data shown are approximate interpretations and for illustrative purposes only. Measured according to the RICS. Not To Scale.

www.goldlens.co.uk

Ref. No. 031159J

