



Flat 6 293 Fircroft Court, Bramhall Lane | Davenport | SK3 8TA

EDWARD
mellor

NO PARKING
IN FRONT OF
THIS AREA



Features

- Stunning First Floor Apartment
- 2 Large Double Bedrooms
- Superbly Fitted Kitchen & Bathroom
- Residents Parking & En Bloc Garage
- Highly Sought After Location

Welcome to Fircroft Court in this highly regarded location of Davenport. This is apartment living at its very finest and this stunning 2 double bedroom first floor flat simply must be viewed to appreciate not only its impressive size but also the high standard and stylish interior. Located on the first floor, the

flat enjoys slightly elevated views over the pleasant communal lawned gardens and beyond which is residents parking and your very own en bloc garage for secure parking and /or extra storage. The property is ideally suited to a young professional person / couple or perhaps those looking to

downsize whilst still wishing to retain a real sense of space and features a superbly fitted kitchen, 4 piece family bathroom suite and a hugely impressive living room which provides ample room for both seating and dining. Viewing highly recommended.



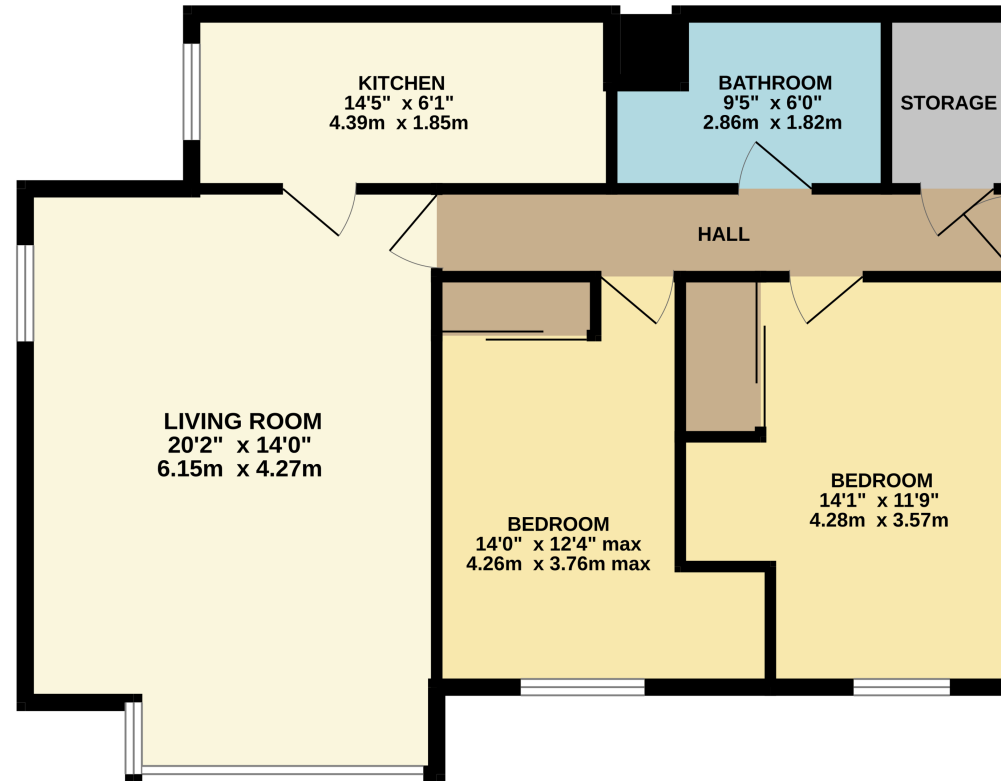
Fircroft Court is set back from Bramhall Lane in the heart of Davenport and is within walking distance of local shopping facilities and good public transport links with Davenport Train Station being just a short stroll away. The accommodation on offer briefly comprises : Communal entrance hall with stairs to the first floor and security entry system, welcoming private entrance hall with useful built in storage cupboard, fabulous size living room which is perfect for entertaining / social gatherings and a wonderful space in which to relax and unwind, beautifully fitted kitchen, 2 great size double bedrooms and a lovely 4 piece bathroom suite with walk in shower.



FLOOR LAYOUT

Not to Scale - For Identification Purposes Only

FIRST FLOOR
766 sq.ft. (71.2 sq.m.) approx.



TOTAL FLOOR AREA : 766 sq.ft. (71.2 sq.m.) approx.

Whilst every attempt has been made to ensure the accuracy of the floorplan contained here, measurements of doors, windows, rooms and any other items are approximate and no responsibility is taken for any error, omission or mis-statement. This plan is for illustrative purposes only and should be used as such by any prospective purchaser. The services, systems and appliances shown have not been tested and no guarantee as to their operability or efficiency can be given.
Made with Metropix ©2025

Important Information

- Council Tax Band: C
- Tenure: Leasehold
- Years Remaining on the Lease : 946 Years

- Annual Service Charge: £1260

EPC Rating

182, London Road, SK7 4DQ
T: 0161 456 6000
E: hazeltrove@edwardmellor.co.uk

The agent has not tested apparatus, equipment, fittings or services and so cannot verify they are in working order or fit for their purpose. The buyer is advised to obtain verification from their Solicitor or Surveyor. Photographs are reproduced for general information and it must not be inferred that any item is included for sale with the property. Please note that all measurements are approximate. These particulars are issued on the understanding that any negotiations in regard to this property are carried out through Edward Mellor Ltd. This property is offered subject to not being sold or withdrawn on receipt of reply. These particulars are believed to be correct but do not form a contract for sale. None of the statements contained in these particulars as to this property are to be relied on as statements or representations of fact. The vendor does not make or give, and neither Edward Mellor Ltd. nor any person in their employment has any authority to make or give, any representation or warranty in relation to this property.