



Anglesea Road, KT1

£450,000

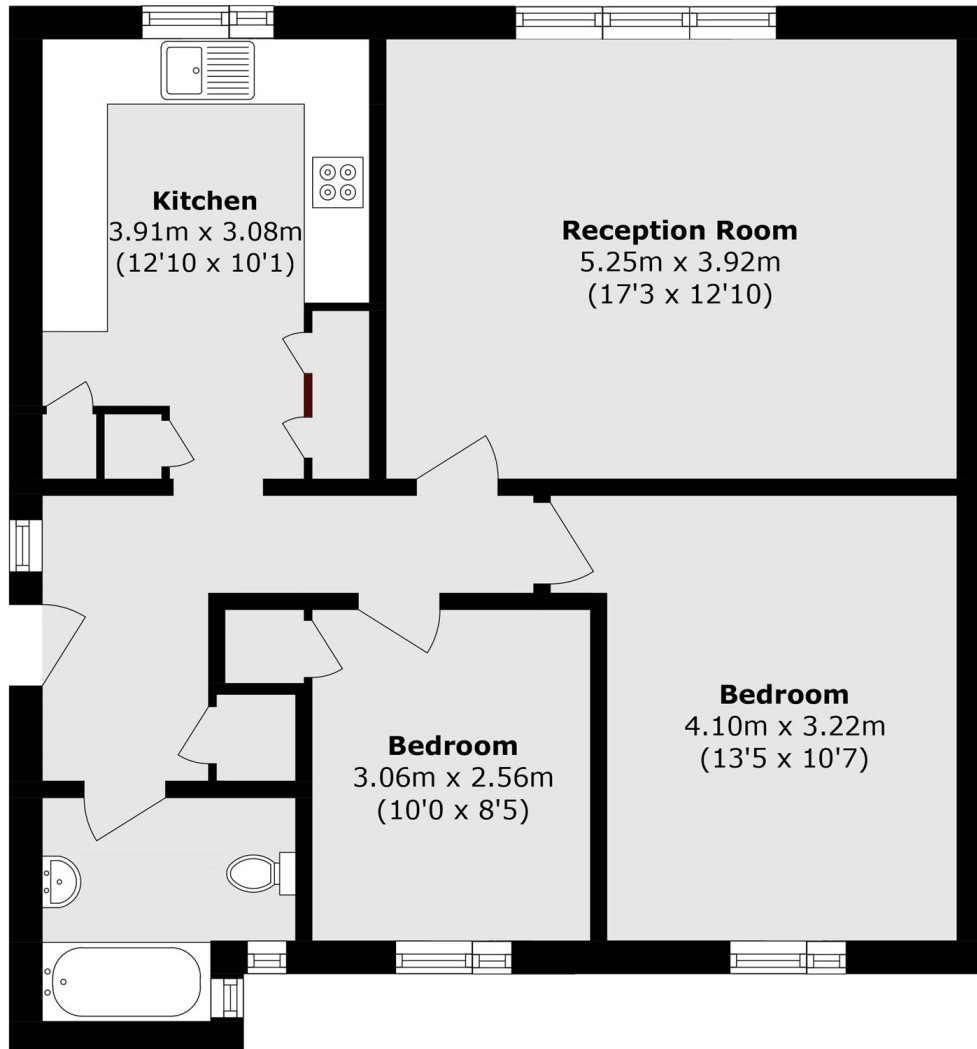
A well presented two double bedroom apartment on one of the sought after 'River Roads'. The property is exceptionally spacious, light and bright throughout. It is perfect step to get on the property ladder with great links to town and the city.

Anglesea Road is one of the sought after river roads just half a mile from both Surbiton station, offering fast links into London, and Kingston upon Thames's vibrant town centre, easily accessible via a pleasant riverside walk.

Features

- Two Double Bedrooms
- Spacious
- Good Condition
- Communal Gardens
- Great Views
- River Road

Anglesea Road, Kingston Upon Thames, KT1



Total area (approx.): 70.9 sq. m (763.1 sq. ft)