



## Gray's Inn Road, WC1X

£2,275 Per calendar month

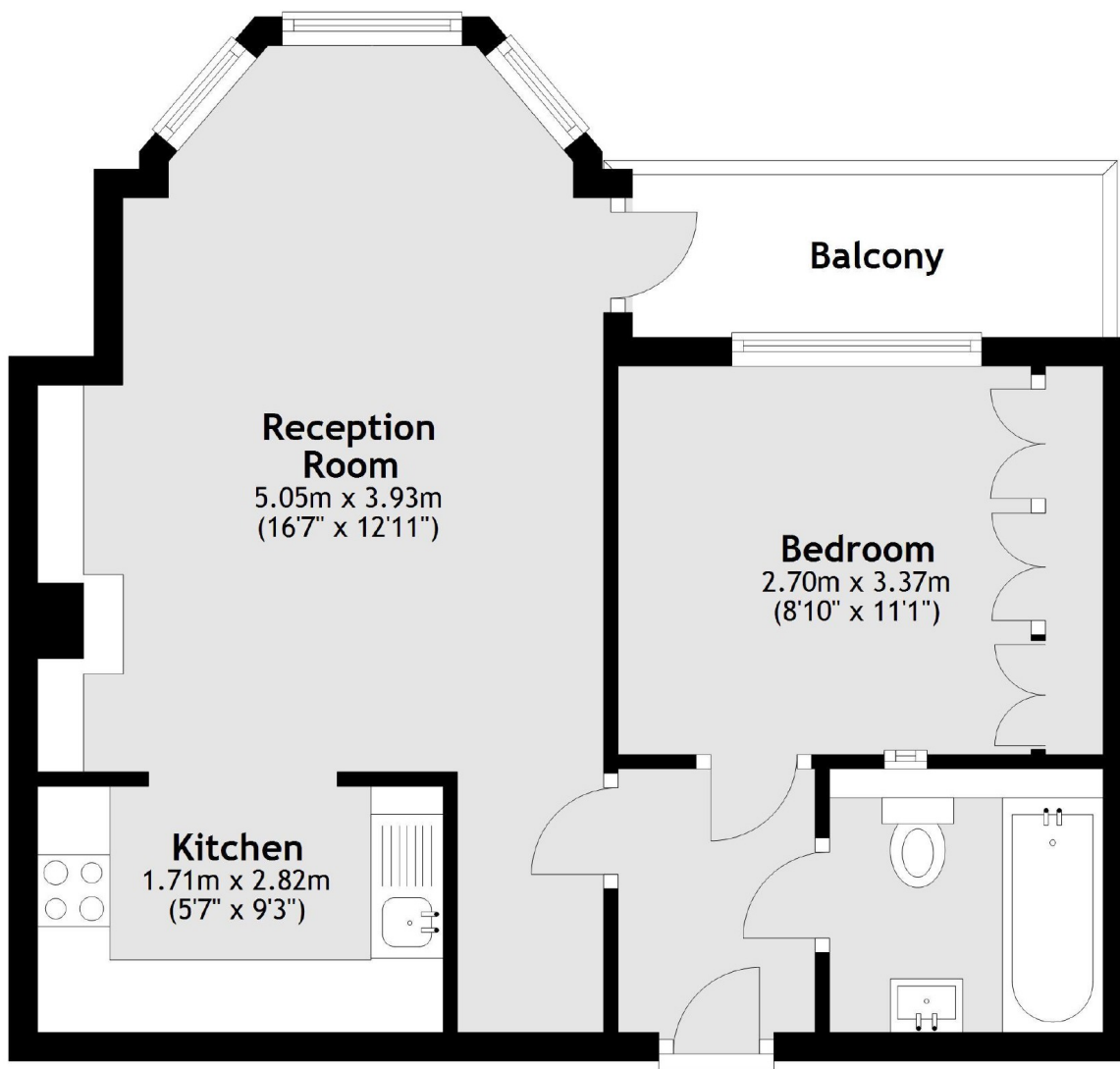
A bright and spacious one bedroom apartment on the top floor of this popular block on Grays Inn Road. The property has an open plan kitchen reception room and a double bedroom with good storage space.

Trinity Court is located a short walk away from King's Cross Station making it an ideal location for those wanting to be close to local transport and local amenities including an array of shops, restaurants and bars.

### Features

- Open Plan Living
- Balcony
- Top Floor
- Secure Building
- Purpose Built
- Kings Cross Close By

# Gray's Inn Road, London, WC1X



**Main area: Approx. 40.5 sq. metres (435.5 sq. feet)**  
Plus balconies, approx. 4.1 sq. metres (44.6 sq. feet)