



27 St. Anthony's Road
Kettering, NN15 5HT



Simpson & Partners

Situated on St. Anthony's Road, this delightful three-bedroom semi-detached family home presents an excellent opportunity for those seeking a comfortable and modern living space. Recently decorated, the property boasts spacious accommodation that is perfect for family life.

The home features a garage, providing convenient storage or parking options, and is situated at the end of a chain, ensuring a smooth transition for prospective buyers. With central heating throughout, you can enjoy a warm and inviting atmosphere during the colder months. The UPVC double glazing not only enhances energy efficiency but also contributes to a peaceful indoor environment, shielding you from external noise.

The low-maintenance garden is an added bonus, offering a private outdoor space for relaxation or entertaining without the burden of extensive upkeep. This property is located in a very popular area, close to a variety of amenities, making it ideal for families and individuals alike.

In summary, this semi-detached home on St. Anthony's Road is a wonderful blend of comfort, convenience, and modern living, making it a must-see for anyone looking to settle in Kettering.



£240,000

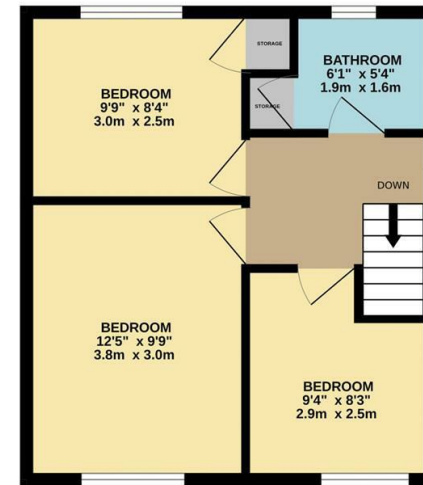
 3  1  1



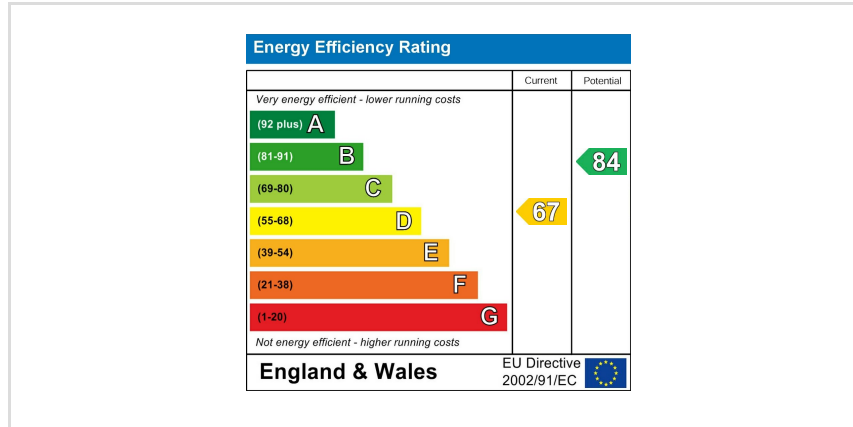
GROUND FLOOR



1ST FLOOR



Whilst every attempt has been made to ensure the accuracy of the floorplan contained here, measurements of doors, windows, rooms and any other items are approximate and no responsibility is taken for any error, omission or mis-statement. This plan is for illustrative purposes only and should be used as such by any prospective purchaser. The services, systems and appliances shown have not been tested and no guarantee as to their operability or efficiency can be given.
Made with Metropix ©2026



When you buy with Simpson and Partners, you know **you'll be in safe hands**. From the moment you walk through our doors, we'll make you **feel truly welcome**. Our sales consultants and financial advisors will take you through **every step of the process**, offering **free expert advice** along the way, from help choosing the right mortgage and insurance through to finding your conveyancer. And if you need help selling your home too, **with over 20 years of local experience, you can trust us to get you moving**.



**Simpson
& Partners**

Making Every
Journey Personal



01536 518200

kettering@simpsonandpartners.co.uk

<https://www.simpsonandpartners.co.uk/>

1 Silver Street, Kettering, Northants, NN16 0BN