



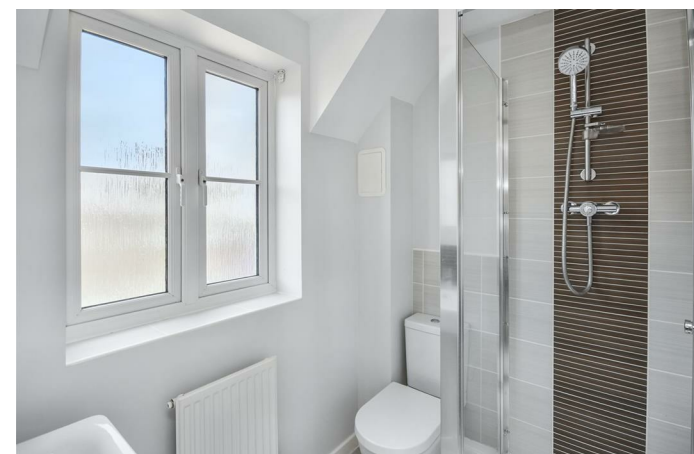
19 Courteenhall Drive
Priors Hall Park, Northants NN17 5FE



Simpson West

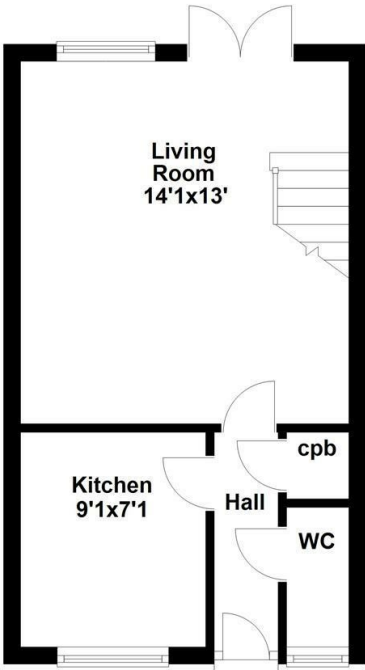
Located within the highly prestigious Priors Hall Park is this charming two bedroom semi detached residence that is being offered to the market for sale with no onward chain. The property itself occupies a pleasant position and is within walking distance to the local school, shops and other amenities. Features include an entrance hall, cloakroom w/c, a modern fitted kitchen and living dining room with doors leading to the rear garden. To the first floor there are two double bedrooms, one of which boasts fitted wardrobes and an en-suite shower room, in addition to this there is the main family bathroom. Outside there is a low maintenance garden that is fully enclosed, this features both a patio area and lawned space. To the front there is an allocated off road parking space. Early viewings are an absolute must. Energy Rating C. Council tax band B.

£200,000

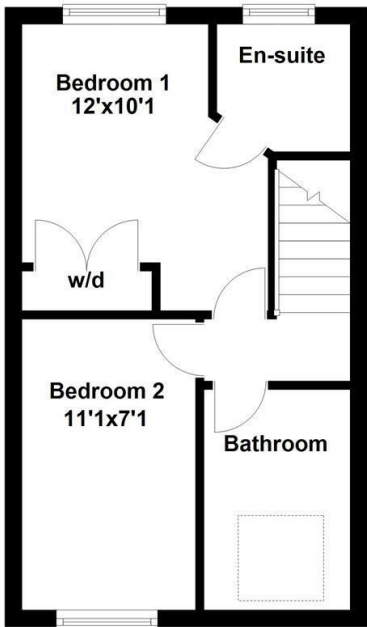


Simpson West

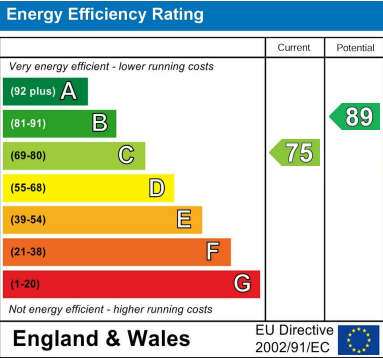
Ground Floor



First Floor



Floor plan not to scale - for guidance purposes only.
Floor plan created by Simpson West for their use.
Plan produced using PlanUp.



When you buy with Simpson West, you know **you'll be in safe hands**. From the moment you walk through our doors, we'll make you **feel truly welcome**. Our sales consultants and financial advisors will take you through **every step of the process**, offering **free expert advice** along the way, from help choosing the right mortgage and insurance through to finding your conveyancer. And if you need help selling your home too, **with over 20 years of local experience, you can trust us to get you moving**.



**Simpson
West**

Making Every
Journey Personal



01536 202007

info@simpsonwest.co.uk

<https://www.simpsonwest.co.uk/>

64 Corporation Street, Corby, Northants, NN17 1NH