



The Green, TW2

£1,900 Per calendar month

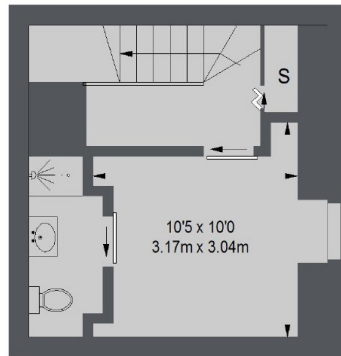
New to the market is this versatile living two/three bedroom split-level maisonette which has views across Twickenham Green and is perfect for young professionals or families,

This modern apartment is just moments from the high street where you will find a vast array of shops, pubs and restaurants. There are also regular bus links in and out of Twickenham.

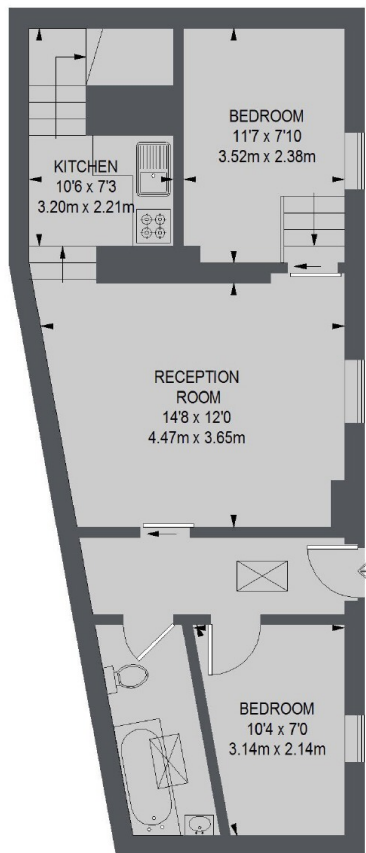
Features

- Split-Level Maisonette
- Recently Refurbished
- Integrated Speakers
- Great Location
- Two Bathrooms
- Moments From The Green

The Green, Twickenham, TW2



LOWER GROUND FLOOR



GROUND FLOOR

TOTAL APPROX. FLOOR AREA
745 SQ. FT. (69.21 SQ. M.)