



RESIDE

MANCHESTER

BLOCK
B

← BLOCK A
BLOCK B →
W
OR
RA
LL

206 9d Worrall Street
Salford, M5 4TZ

£1,140 Per Month



206 9d Worrall Street

, Salford, M5 4TZ

Rent To Buy Scheme.

This two bedroom one bathroom apartment with a spacious balcony is located on the second floor is available to rent immediately. The apartment include carpets, blinds, oven, hob, extractor and washing machine.

The rent-to-buy scheme is made so you can 'try before you buy'. It allows you to rent your home at a reduced rate, while you save up for a deposit to purchase it in the future. There's no rush, and you don't have to make the decision next week. At Worrall Street, you won't even need to make it next year. The whole point is easing you into the process one step at a time.

Applicants must:

- Be first-time buyers, unless they are returning to the market following a personal incident such as a relationship breakdown which has meant the applicant has needed to leave their home.
- Be working, and intending to buy their own home in the future.
- Be unable to purchase right now via the open market.
- Be able to pay a rental deposit equivalent to a month's rent.
- Have a household income of less than £80,000 per year

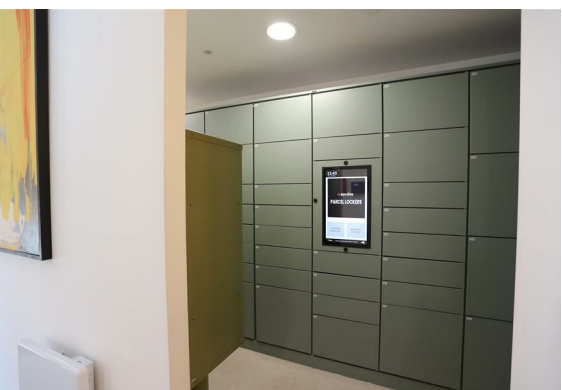
For more information and to book a viewing call the office on 0161 837 2840.

- Rent To Buy Scheme
- Two Double Bedrooms
- One Bathroom
- Unfurnished
- Available Immediately
- EPC Rating C
- Brand New Development

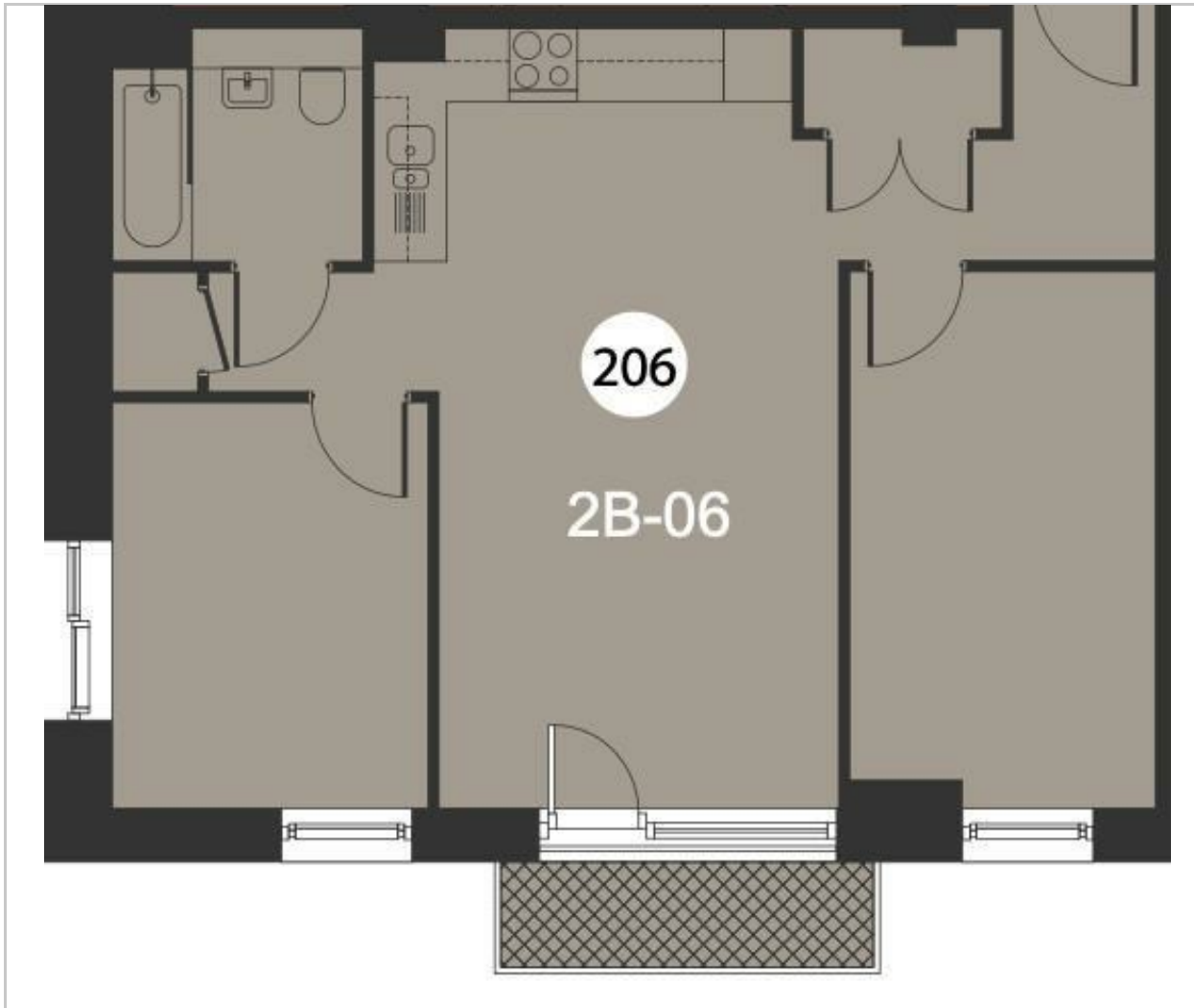




- Short Walk Into The City Centre
- Spacious Balcony
- Bike Store & Parcel Room



Floor Plan



Viewing

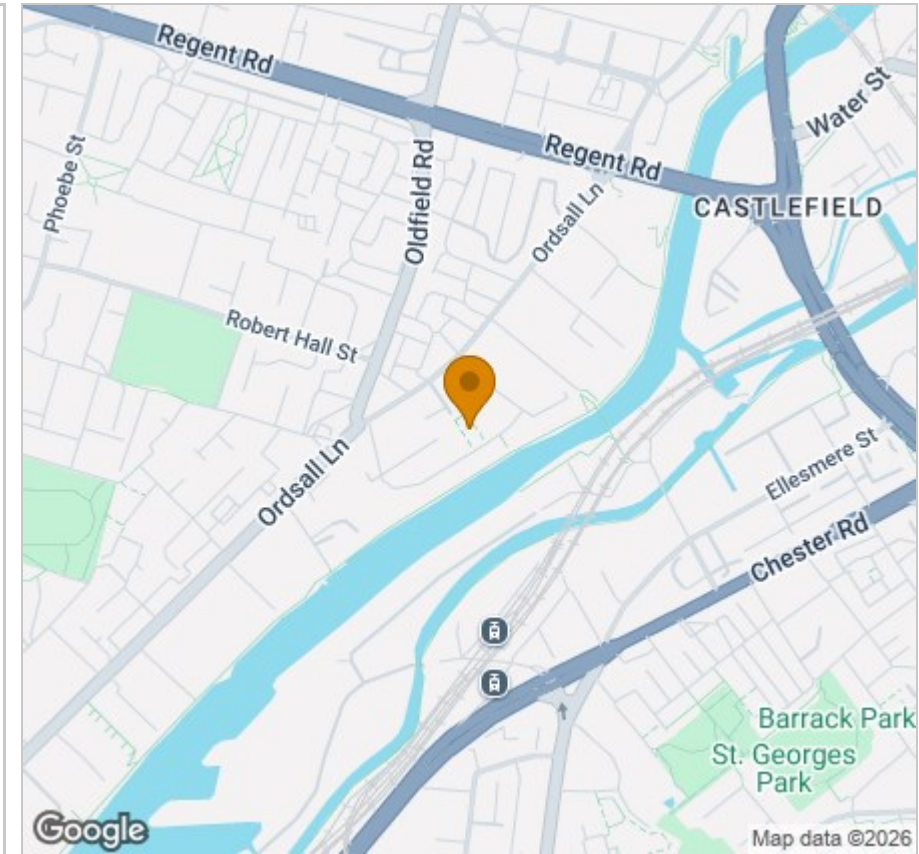
Please contact our Reside Manchester Office on 0161 837 2840 if you wish to arrange a viewing appointment for this property or require further information.

These particulars, whilst believed to be accurate are set out as a general outline only for guidance and do not constitute any part of an offer or contract. Intending purchasers should not rely on them as statements of representation of fact, but must satisfy themselves by inspection or otherwise as to their accuracy. No person in this firm's employment has the authority to make or give any representation or warranty in respect of the property.

4 Jordan Street, Manchester, Greater Manchester, M15 4PY

Tel: 0161 837 2840 Email: info@residemanchester.com www.reside-property.com

Area Map



Energy Efficiency Graph

