



Guide Price
£525,000

Freehold

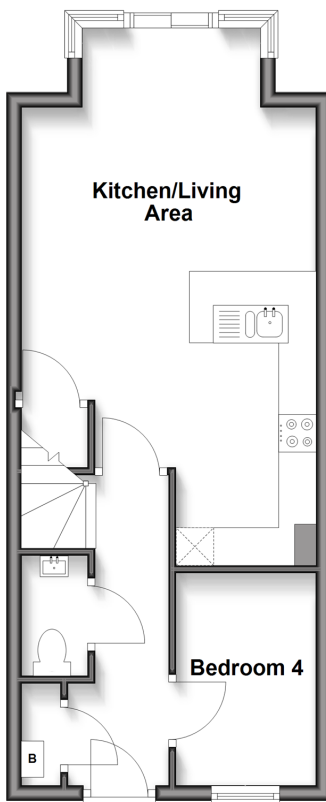
4x  2x  2x 

Central Road, Dartford,
Kent, DA1

Wards
Helping you move forwards

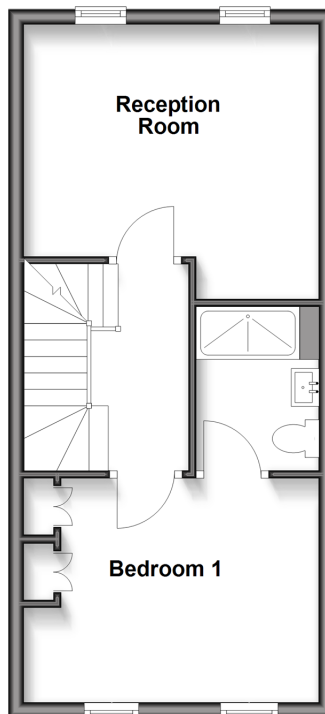
Ground Floor

Approx. 37.8 sq. metres (407.1 sq. feet)



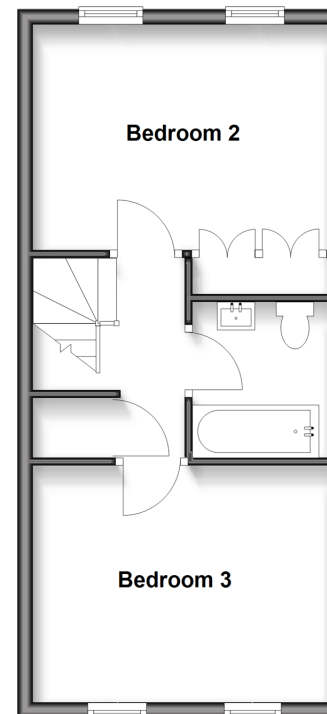
First Floor

Approx. 35.3 sq. metres (380.2 sq. feet)



Second Floor

Approx. 35.3 sq. metres (380.2 sq. feet)



Accommodation

GROUND FLOOR

Hallway

Cloakroom

Bedroom 4: 12'10 x 9'9 (3.91m x 2.97m)

Kitchen/Living Area: 23'0 x 12'0 (7.02m x 3.66m)

Landing

Bedroom 1: 13'0 x 10'0 (3.97m x 3.05m)

En-suite Shower Room

Reception Room: 9'5 x 6'3 (2.87m x 1.91m)

Landing

Bedroom 2: 13'0 x 10'0 (3.97m x 3.05m)

Bedroom 3: 13'0 x 10'0 (3.97m x 3.05m)

Family Bathroom

Rear Garden

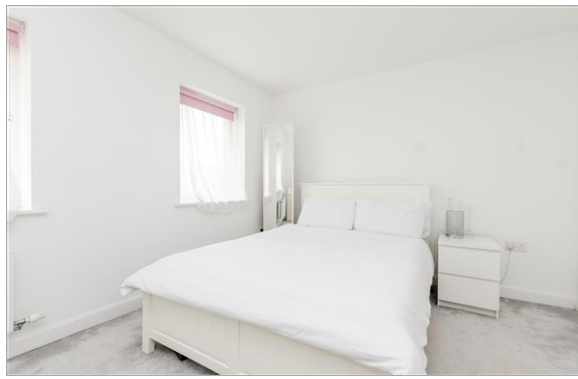
Garage

Allocated Parking Space

FIRST FLOOR

SECOND FLOOR

OUTSIDE



Main features

- Modern terraced house on popular development
- Handy cloakroom, en-suite and family bathroom
- Convenient allocated parking and garage
- Sought after ground floor office
- Ideal commuter location for train station as well as town centre



Nearest Schools

Primary Schools: Temple Hill Community Primary and Nursery School 0.4 miles, St Anselm's Catholic Primary 0.4 miles, York Road Junior School and Language Unit 0.5 miles



Transport Information

Train Stations: Dartford 0.1 miles, Stone Crossing 1.8 miles, Crayford 1.9 miles



Address

Central Road, Dartford, Kent, DA1



Directions

For directions to this property please contact us.



Wards
Helping you move forwards

Call Dartford Branch 01322 288211 ■ wardsofkent.co.uk



■ Legal advice should be taken to verify fixtures/fittings, planning, alterations and/or lease details ■ Appliances & services are untested, dimensions are approximate and floor plans are not to scale



10546154/20251028/LH/LH