



Devonshire Road, London, W4
Guide Price £1,595,000

WHITMAN & CO.
SALES · LETTINGS · COMMERCIAL



A beautifully presented, fully extended four-bedroom period home ideally located within the highly sought-after Glebe Estate, moments from the shops, cafés and restaurants along Devonshire Road. The house totals close to 1600sqft and offers well-balanced accommodation arranged over three floors. The ground floor features a superb double reception room to the front and a generous 20' kitchen/dining room to the rear with doors leading onto a lovely secluded landscaped garden, together with a cloakroom. The upper floors provide four bedrooms, including a spacious principal bedroom with an en-suite bathroom, three further bedrooms and a family bathroom. The house is ideally situated moments from Chiswick High Road, Turnham Green Terrace, and Devonshire Road with its cafes, bars, boutiques, shops, and restaurants (including the Michelin-starred La Trompette). Local transport links include Turnham Green tube station, numerous local bus routes and vehicular access via A4/M4 to central London, Heathrow and the West. No onward chain.



Devonshire Road, W4

Approximate gross internal area

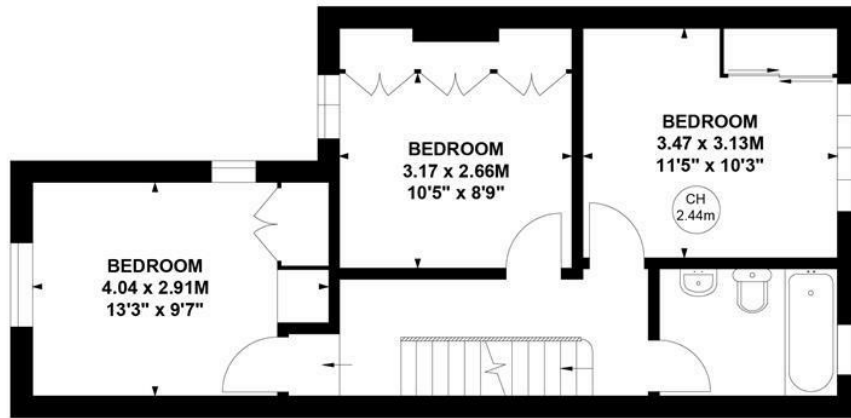
149.09 sq m / 1605 sq ft

(Including Eaves Storage)

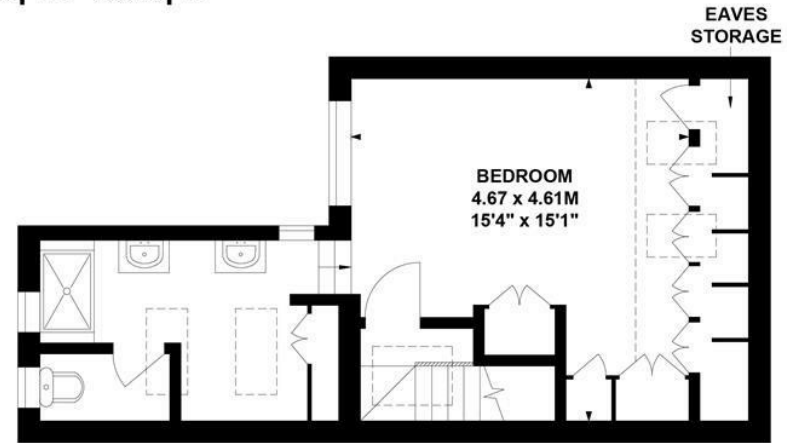
Eaves Storage : 3.10 sq m / 33 sq ft

Key :

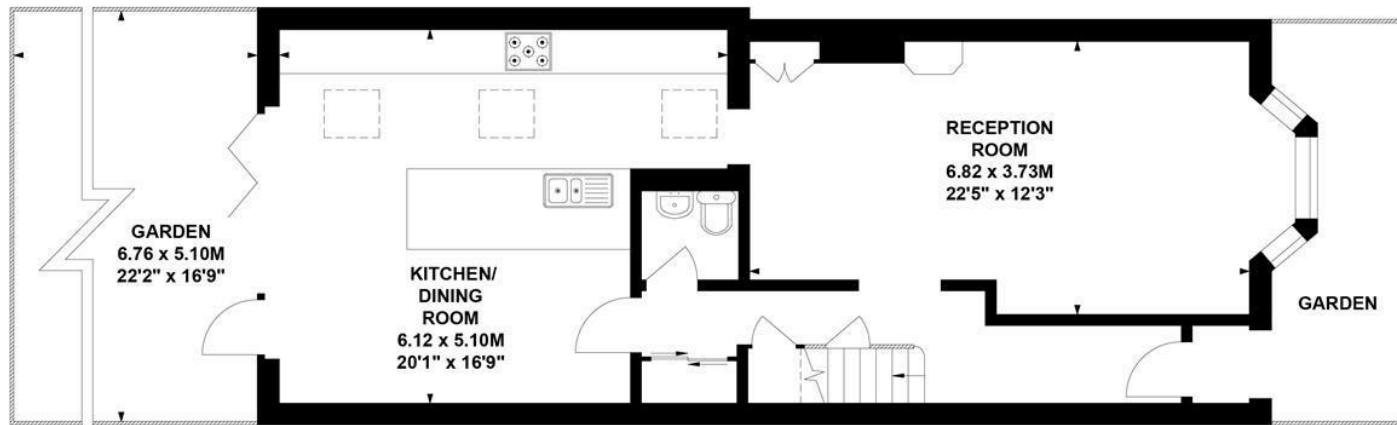
CH - Ceiling Height



First Floor



Second Floor



Ground Floor

Not to scale, for guidance only and must not be relied upon as a statement of fact.

All measurements and areas are approximate only

- Fully extended Victorian home
- Four beds/two baths
- Sought after central location

- Secluded landscaped garden
- Excellent entertaining space
- No onward chain

Tenure - Freehold
Local Authority - Hounslow
Council Tax - Band G

