



ULLSWATER CRESCENT, SW15

£1,695,000

Detached family home
Five bedrooms
Three bathrooms
Off-street parking
Large private garden
Energy rating: c

@marshandparsons
marshandparsons.co.uk

MARSH &
PARSONS

ABOUT THE PROPERTY

A spacious five bedroom detached family home situated in a quiet residential area of Kingston Vale, with the benefit of a large garden with garden room and off-street parking for multiple vehicles.

Ullswater Crescent is a popular residential street conveniently located close to Richmond Park and Wimbledon Common, with Kingston town centre and its extensive shopping and leisure facilities a short distance away. The area is also well served by a selection of highly regarded state and private schools.







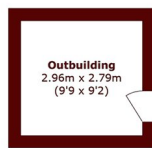
FURTHER DETAILS

The ground floor features a generous entrance hall, double reception room and an impressive kitchen/dining room with skylights and bi-fold doors opening onto a private rear garden. A guest WC and utility room completes the ground floor accommodation.

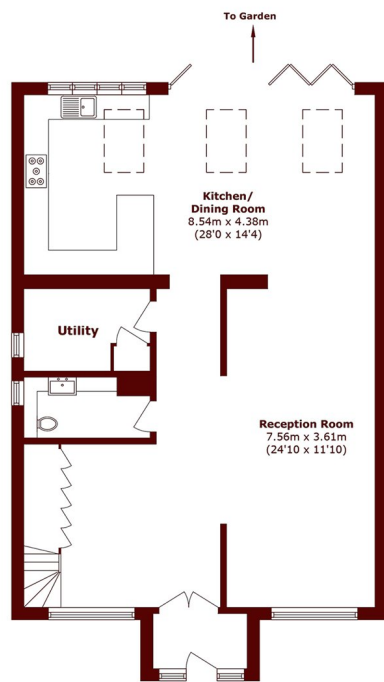
The first floor has three bedrooms and two bathrooms, including a principal bedroom with en suite, while the top floor provides two further double bedrooms and an additional family bathroom.



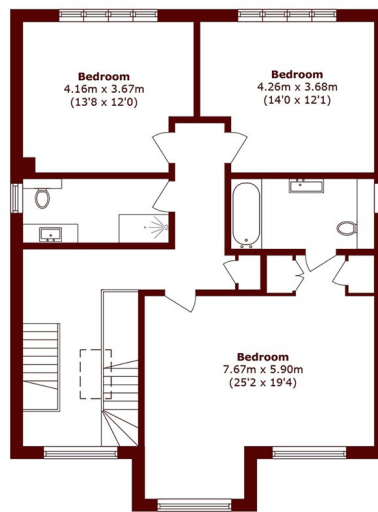
STEP INSIDE ULLSWATER CRESCENT



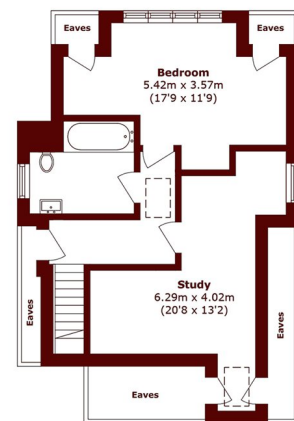
Ground Floor



Ground Floor



First Floor



Second Floor

Total area (approx.): 243.9 sq. m (2625.3 sq. ft)
(Excluding Eaves)

Outbuilding area (approx.): 8.2 sq. m (88.2 sq. ft)

Wimbledon
020 8879 6660

Energy Rating: C We aim to make our particulars both accurate and reliable. However, they are not guaranteed; nor do they form part of an offer or contract. If you require clarification on any points then please contact us, especially if you're traveling some distance to view. Please note that appliances and heating systems have not been tested and therefore no warranties can be given as to their good working order

**MARSH &
PARSONS**