



3 Bedroom Bungalow - Detached
located on Bulkington Road,
Wolvey
Offers Over £400,000

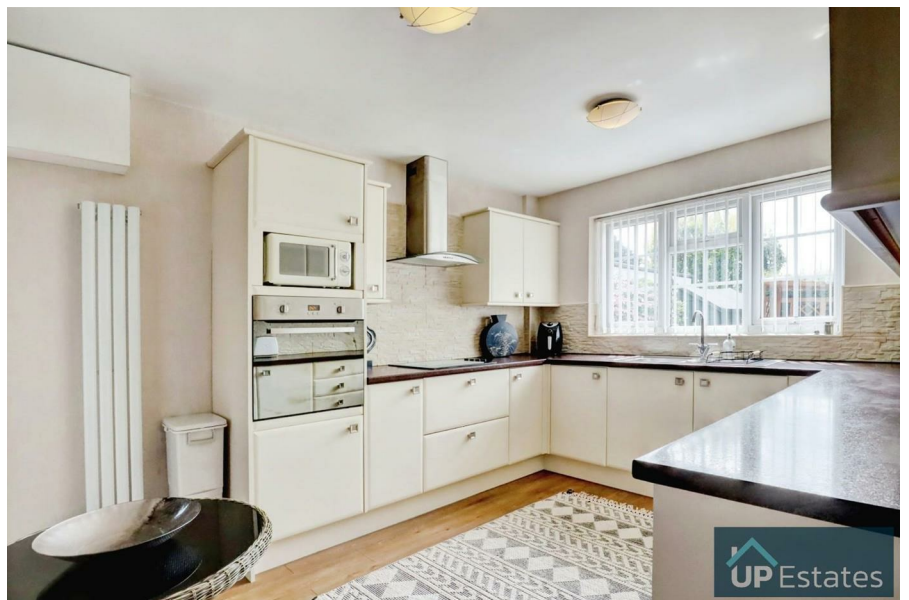




****NO CHAIN - Detached Bungalow - Three Double Bedrooms (One En-Suite) - Impressive Lounge - Set Back From Road - Driveway Parking For Multiple Vehicles* CHECK OUT THE FLOORPLAN** on this spacious detached bungalow located in the desirable village of Wolvey! Offering two bathroom suites + outside WC, private manageable rear garden, and a welcoming entrance hallway, this bungalow offers the rare benefit of being ready to move into, and in brief comprises: multi-car driveway, carport, porch, entrance hall, lounge/diner, double conservatory, kitchen, WC, three double bedrooms with bedroom three benefitting from an ensuite, bathroom and rear garden.

Offers Over £400,000

- NO CHAIN
- Detached Bungalow
- Three Bedrooms (One En-Suite)
- Circa 1,300 sq ft accomodation
- Driveway Parking For Multiple Vehicles
- Welcoming Entrance Hall
- Sought After Village Location
- CHECK OUT THE FLOORPLAN



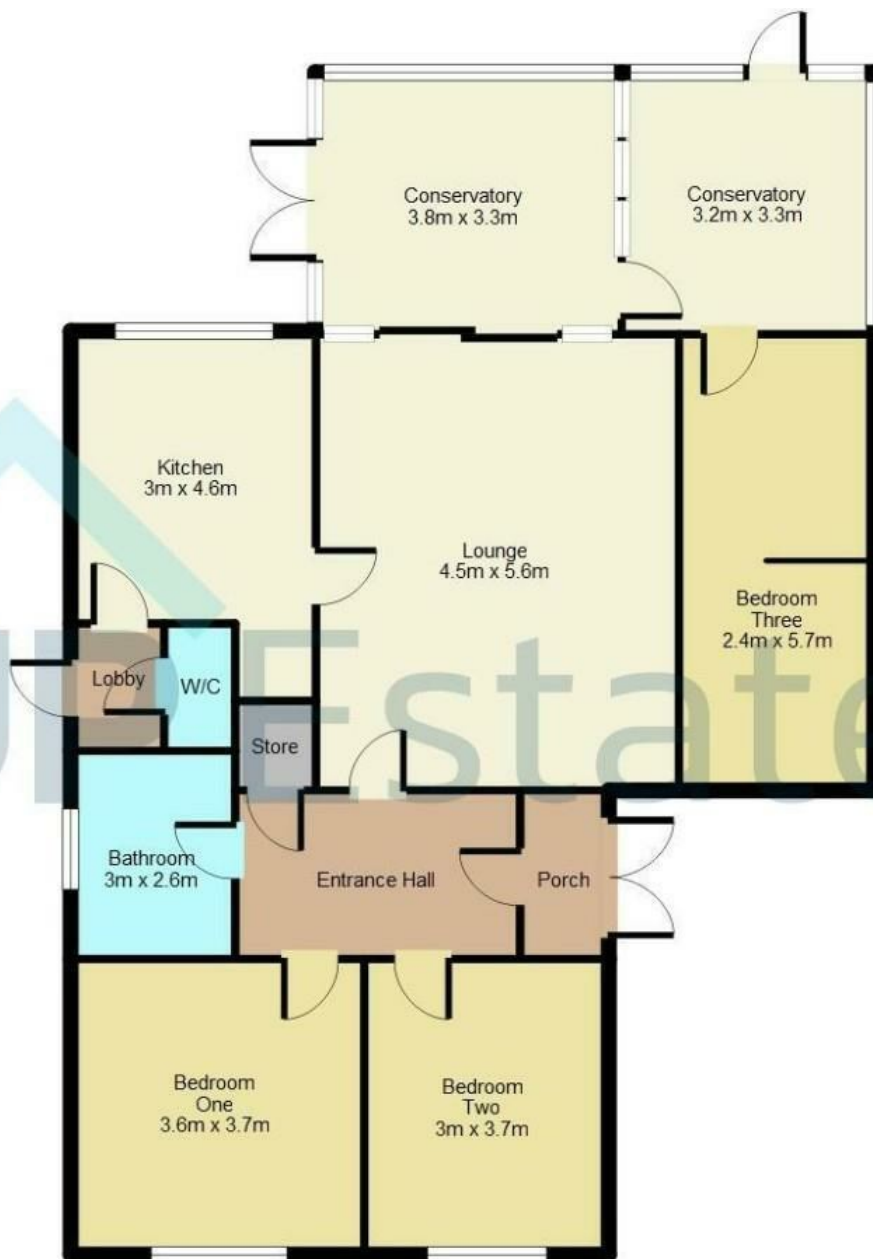






Bulkington Road, Wolvey





For illustrative purposes only. Measurements are approximate and not to scale
(c) Up Estates

Approx Internal Floor Area: 1371 sq.f / 127 sq.m

CONTACT

Up Estates,
11 Dugdale Street
Nuneaton
Warwickshire
CV11 5QJ

E: enquiries@upestates.co.uk
T: 024 7771 0790

UP Estates