



Maltings Place, SW6

£900,000

A three bedroom, two bathroom, freehold house offering spacious and contemporary living throughout; complemented by a private patio garden. The property further benefits from off-street parking and is situated within a secure, private gated development.

Maltings Place is a gated complex conveniently located within walking distance of the to the river and has excellent transport links including Fulham Broadway and Imperial Wharf. There are also plenty of amenities nearby, including the famous Kings Road which offers a wide range of shops, restaurants and boutiques.

Features

Three Bedrooms
Secure Gated Complex
Two Bathrooms And W.C.
Freehold House

Private Patio Garden
Sold Chain Free



Maltings Place, SW6

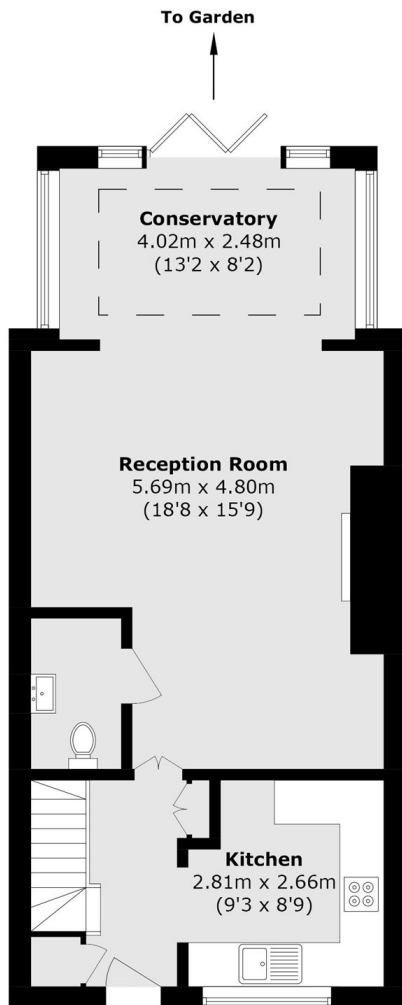
The ground floor offers an impressive amount of living space, beginning with a sleek, fully integrated modern kitchen positioned at the front of the property. To the rear, a spacious reception room flows effortlessly into a bright dining area conservatory, creating an ideal setting for both everyday living and entertaining. Bi-fold doors open onto a private patio, seamlessly extending the living space outdoors, while a conveniently located ground floor W.C adds to the practicality of the layout.

Upstairs, the property comprises three well-proportioned bedrooms and two bathrooms. The principal bedroom features built-in storage and a stylish en suite, while a contemporary family bathroom serves the remaining bedrooms.

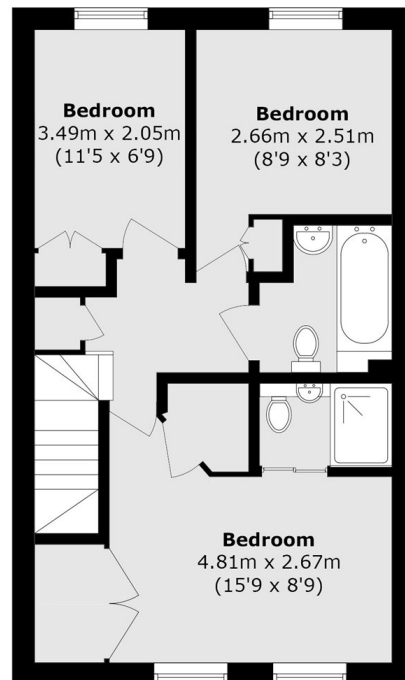
Maltings Place is a highly sought-after private development, offering landscaped communal gardens, secure gated access, allocated parking, and a welcoming community atmosphere.



Maltings Place, London, SW6



Ground Floor



First Floor

Total area (approx.): 93.3 sq. m (1004.2 sq. ft)