

Garth Morfa, Kinmel Bay, Conwy, LL18 5DX

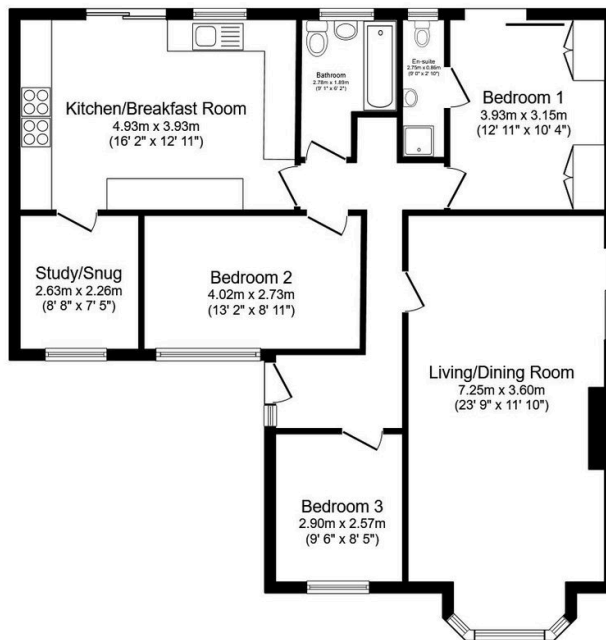
£290,000



We are pleased to offer for sale this well maintained, three bedroom, detached bungalow set in a quiet cul-de-sac location close to the village of Kinmel Bay with its shops, public amenities and doctors surgery. The property benefits from gas central heating, uPVC double glazing, good size lounge/diner, study, large rear garden and ample off road parking. Early viewing is highly recommended.

Key Features

- DETACHED BUNGALOW
- LARGE LOUNGE/DINER
- WELL EQUIPED KITCHEN
- AMPLE OFF STREET PARKING
- COUNCIL TAX BAND -
- THREE BEDROOMS
- STUDY/OFFICE
- LARGE REAR GARDEN
- EPC -
- INSTRUCTED - 19/03/2026, P/R 07/05/26



Floor Plan

Floor area 104.6sq.m. (1,126 sq.ft.)

Total floor area: 104.6sq.m. (1,126 sq.ft.)

This floor plan is for illustrative purposes only. It is not drawn to scale. Any measurements, floor areas (including any total floor area), openings and orientations are approximate. No details are guaranteed, they cannot be relied upon for any purpose and do not form any part of any agreement. No liability is taken for any error, omission or misstatement. A party must rely upon its own inspection(s). Powered by www.Propertybox.io