



**Connells**

Beverley Hills Park  
Amesbury Salisbury



# Beverley Hills Park Amesbury Salisbury SP4 7RU

for sale  
**£140,000**



## Property Description

This two bedroom park home is situated within the popular Beverley Hills development in the centre of Amesbury and is close to shops, bus routes and the A303. There is a good sized garden to the rear and private driveway. Pets are allowed and there is no onward chain.

## Entrance Hall

## Living Room

Double aspect with twin bay windows to front and with further window to side, fitted gas fire.

## Dining Area

Side aspect.

## Kitchen

Comprising a single drainer sink unit with an extensive range of wall and base units, cooker space, space for washing machine, further appliance space, built in cupboard, door to side.

## Bedroom One

Range of fitted bedroom furniture, rear aspect.

## Bedroom Two

Fitted wardrobe, rear aspect

## Shower Room

Comprising a double shower cubicle with pedestal wash hand basin and WC.

## Outside

## Rear Garden

A good size garden for a park home and mainly laid to lawn.

## Driveway



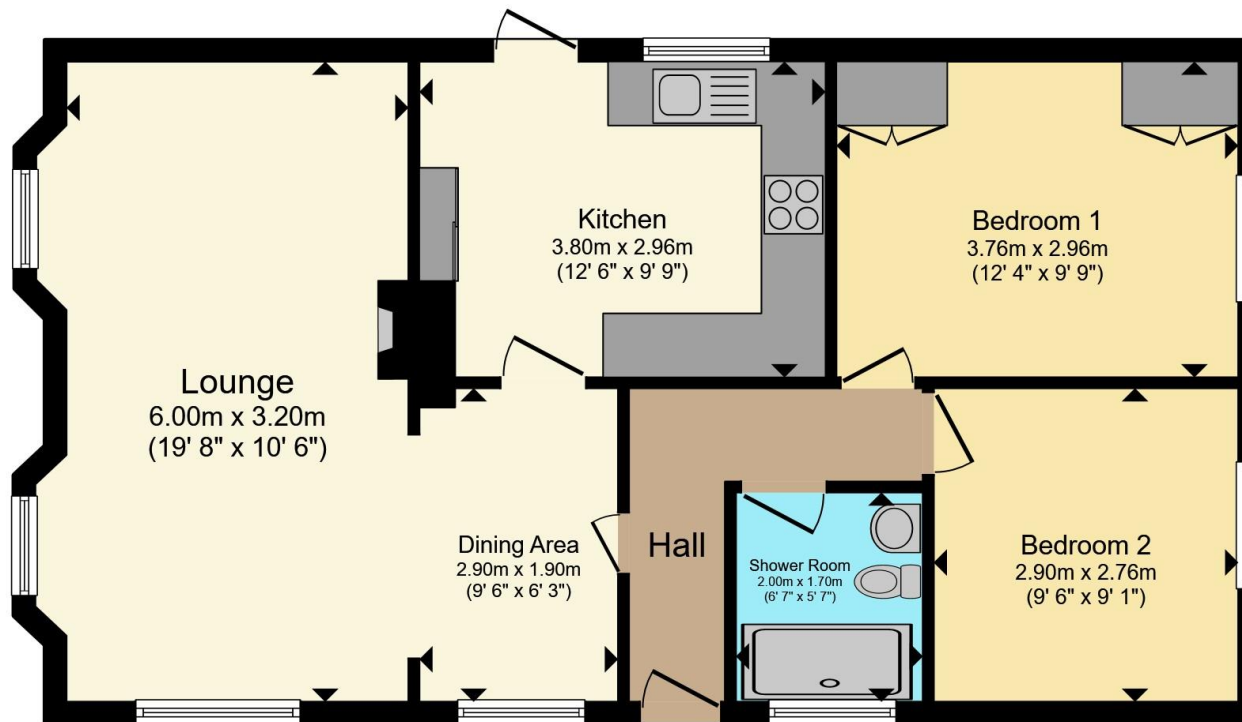












Total floor area 66.6 m<sup>2</sup> (717 sq.ft.) approx

This floor plan is for illustrative purposes only. It is not drawn to scale. Any measurements, floor areas (including any total floor area), openings and orientation are approximate. No details are guaranteed, they cannot be relied upon for any purpose and they do not form part of any agreement. No liability is taken for any error, omission or misstatement. A party must rely upon its own inspection(s). Powered by [www.propertybox.io](http://www.propertybox.io)

**Connells**

To view this property please contact Connells on

**T 01980 622 662**  
**E [amesbury@connells.co.uk](mailto:amesbury@connells.co.uk)**

Unit 3 23 Salisbury Street AMESBURY  
 SALISBURY SP4 7AW

EPC Rating: Exempt  
 Council Tax Band: A

Tenure:

**view this property online [connells.co.uk/Property/ABY308576](http://connells.co.uk/Property/ABY308576)**

We are currently awaiting Tenure details. For further information please contact the branch. Please note additional fees could be incurred for items such as leasehold packs.



1. MONEY LAUNDERING REGULATIONS Intending purchasers will be asked to produce identification documentation at a later stage and we would ask for your co-operation in order that there will be no delay in agreeing the sale. 2. These particulars do not constitute part or all of an offer or contract. 3. The measurements indicated are supplied for guidance only and as such must be considered incorrect. Potential buyers are advised to recheck measurements before committing to any expense. 4. We have not tested any apparatus, equipment, fixtures, fittings or services and it is in the buyers interest to check the working condition of any appliances.

Connells Residential is registered in England and Wales under company number 1489613, Registered Office is Cumbria House, 16-20 Hockliffe Street, Leighton Buzzard, Bedfordshire, LU7 1GN. VAT Registration Number is 500 2481 05.

**See all our properties at [www.connells.co.uk](http://www.connells.co.uk) | [www.rightmove.co.uk](http://www.rightmove.co.uk) | [www.zoopla.co.uk](http://www.zoopla.co.uk)**

Property Ref: ABY308576 - 0003