



7 Calverleigh Close, Bolton
£130,000

Miller Metcalfe
Every step of the way

7 Calverleigh Close

Bolton, Bolton

Attention First Time Buyers & Investors | Nicely Presented First Floor Apartment | No Onward Chain, Available Now Located at the foot of a quiet cul-de-sac just off Hulton Lane stands this hugely impressive two bedroom first floor apartment. The property, which is available immediately with no onward chain is neutrally decorated throughout and ready to move straight into and enjoy immediately. Take advantage of two generous bedrooms, a fitted kitchen with a combination of base and eye level units, a three piece bathroom suite plus a spacious lounge area which is flooded with light. The property is well kept and would be absolutely ideal as a first home or potential rental opportunity for an investor. Unlike a typical apartment block, Calverleigh Close is secured via an intercom system which provides access to just four apartments ensuring privacy and quiet. Located just off Hulton Lane, there's a great selection of amenities nearby such as shops, schools, supermarkets and leisure facilities. There's also allocated parking, visitor parking and on street parking.

Council Tax band: B

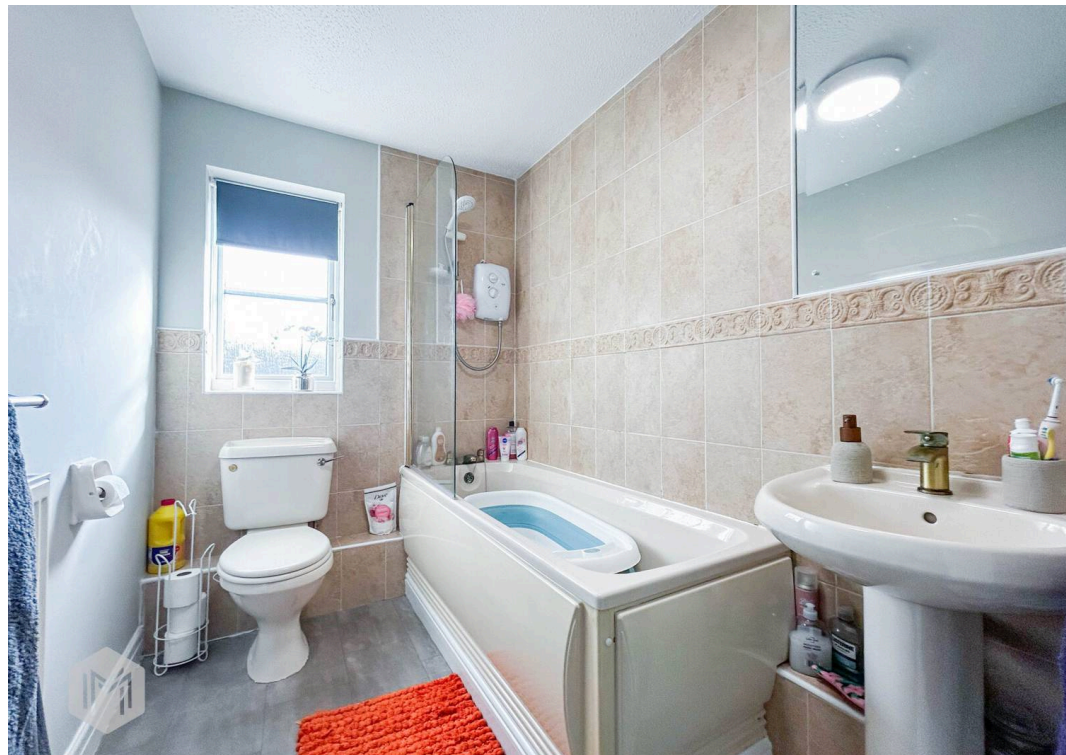
Tenure: Leasehold

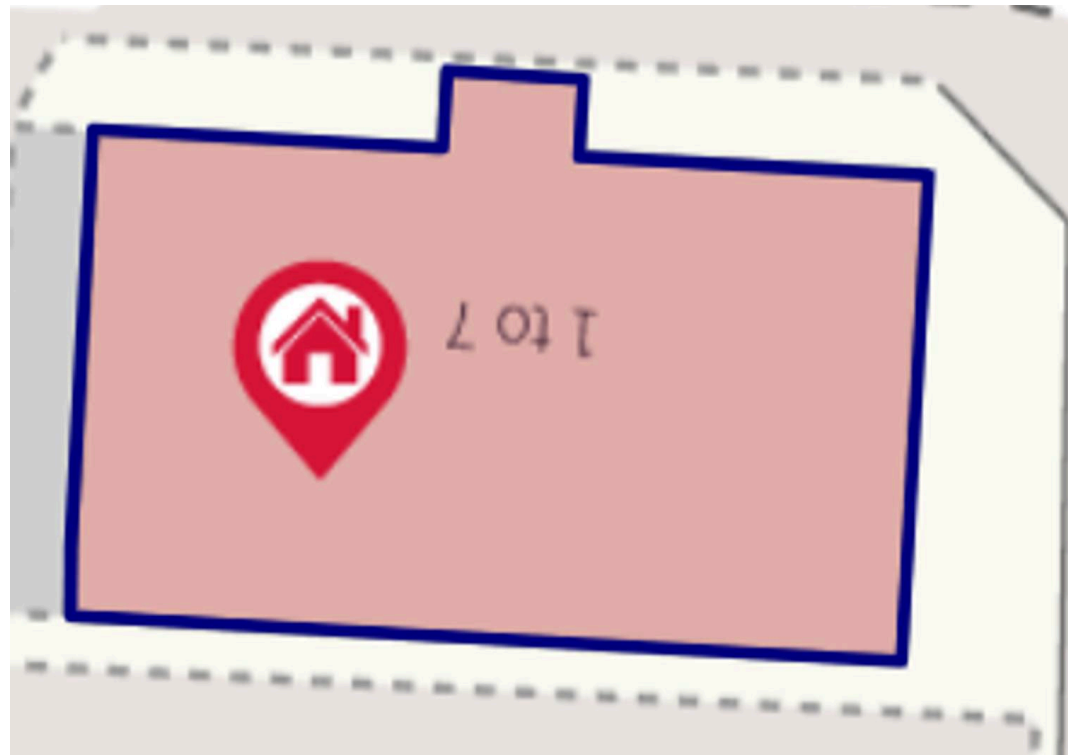
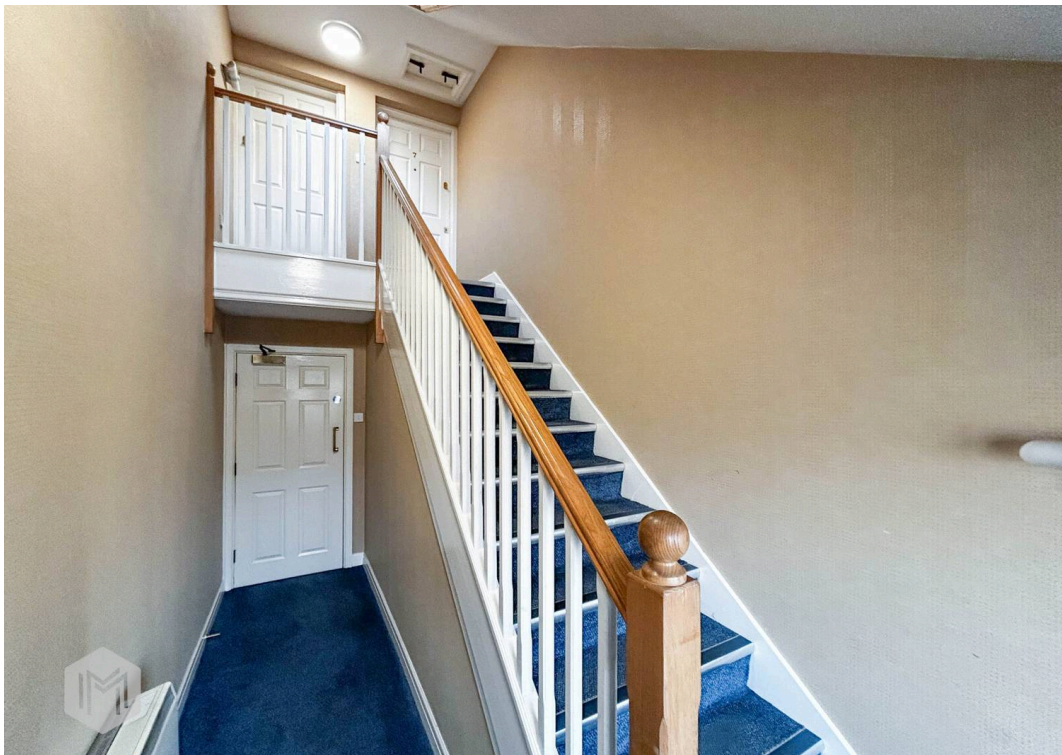
EPC Energy Efficiency Rating: C

EPC Environmental Impact Rating: C

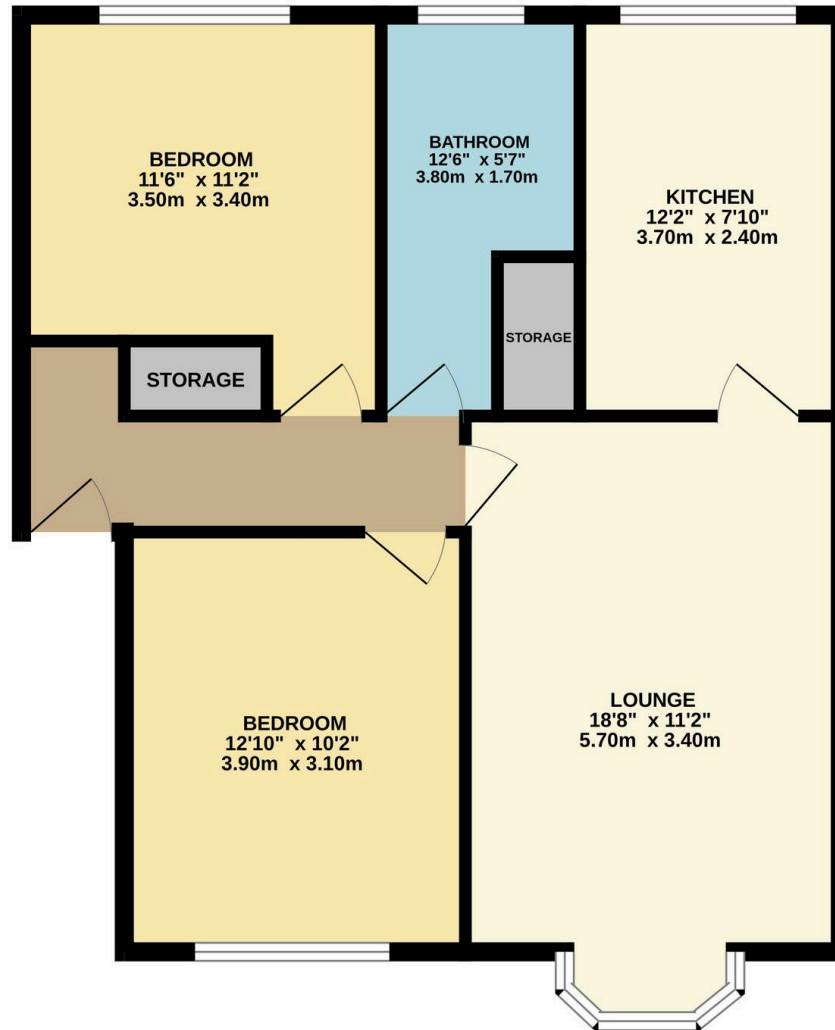








GROUND FLOOR
703 sq.ft. (65.3 sq.m.) approx.



TOTAL FLOOR AREA: 703 sq.ft. (65.3 sq.m.) approx.

Whilst every attempt has been made to ensure the accuracy of the floorplan contained here, measurements of doors, windows, rooms and any other items are approximate and no responsibility is taken for any error, omission or mis-statement. This plan is for illustrative purposes only and should be used as such by any prospective purchaser. The services, systems and appliances shown have not been tested and no guarantee as to their operability or efficiency can be given.
Made with Metroptx ©2026



Miller Metcalfe - Bolton

Miller Metcalfe, 2-10 Bradshawgate - BL1 1DG

01204 535353 • bolton@millermetcalfe.co.uk • millermetcalfe.co.uk/

Miller Metcalfe
Every step of the way