



St. Marys Road, Market Harborough, LE16 7GL

▲
**ANDREW
GRANGER & CO**
└─┘

Part of

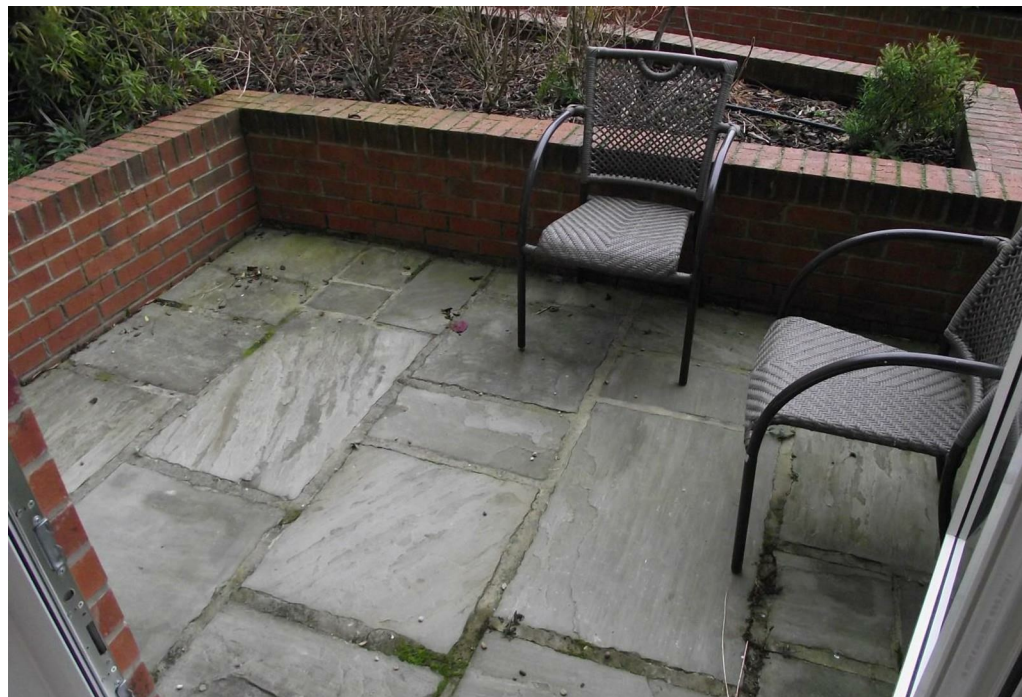
**SHELDON
BOSLEY**
KNIGHT

LAND AND
PROPERTY
PROFESSIONALS

Property Description

A modern one bedroom apartment in the popular Welland Quarter development of Market Harborough. Leading off a communal entrance the spacious accommodation comprises of an open plan living area/kitchen with cooker, fridge and microwave, one double bedroom, family bathroom with shower over bath and a small outdoor patio area. Electric heating. Underground parking for one car. Unfurnished. EPC C. Council Tax B. Rent £825pcm. Deposit £951. Available end of March on a fixed term six month contract with the option to renew.





Key Features

- Modern one bedroom apartment in the sought-after Welland Quarter development
- Spacious open-plan living area with integrated kitchen
- Kitchen includes cooker, fridge, and microwave
- One good-sized double bedroom
- Family bathroom with shower over bath
- Small private outdoor patio area
- One car parking space
- EPC C. Council Tax B
- Rent £825pcm. Deposit £951
- Available end of March on a fixed term six month contract with the option to renew

£825 PCM