



LUCIEN ROAD, SW17

£325,000

- Victorian Conversion Flat
- 1 Large Double Bedroom
- First Floor
- Spacious Lounge
- No Onward Chain
- Sought After Road / Location



1



1



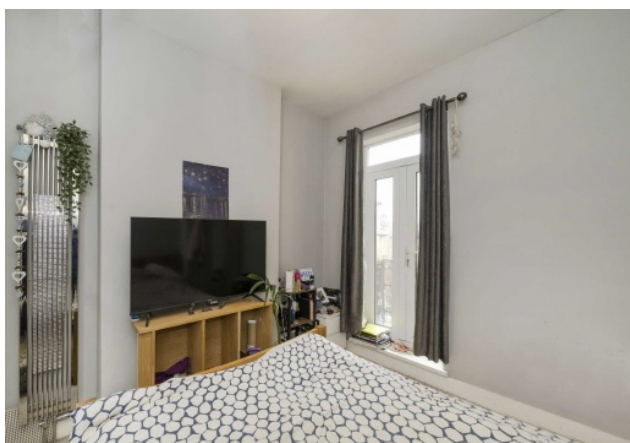
1



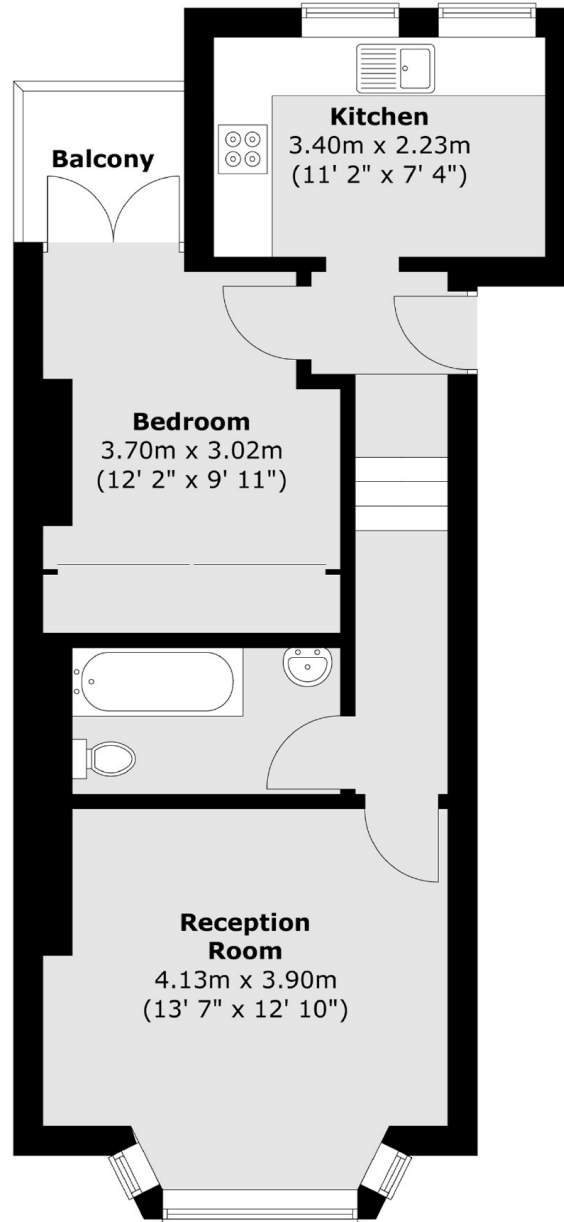
ABOUT THE HOME

A charming Victorian conversion flat location on the first floor, being sold with the added benefit of no onward chain. Internally the property amasses nearly 500sqft and comprises; A spacious lounge with separate modern kitchen, fully tiled family bathroom, generous double bedroom with full bank of fitted wardrobes and french doors leading out to a private balcony.

Located on Lucien Road in the heart of Tooting Bec, located within moments of Tooting Common and a short walking distance of Tooting Bec tube station (Northern Line)







Total area (approx.) : 46.3 sq. m (498 sq. ft)
Total balcony area (approx.) : 2.6 sq. m (28 sq. ft)

JACKSONS TOOTING

3 Upper Tooting Road, London,
SW17 7TS
Sales: 020 8487 3175
Lettings: 020 8487 3176

Energy Rating: C We aim to make our particulars both accurate and reliable. However they are not guaranteed; nor do they form part of an offer or contract. If you require clarification on any points then please contact us, especially if you're traveling some distance to view. Please note that appliances and heating systems have not been tested and therefore no warranties can be given as to their good working order.