



**JOWEBSTER**

*22 Maple Lodge*  
Kensington Green, W8



### Property Attributes

- Fully Fitted Kitchen
- Reception Room
- One Bedroom
- One Bathroom
- 24 Hour Security and Concierge
- Gym
- Landscaped Gardens
- One Secure Car Parking Space



### Terms

- Price: £1,075,000
- Borough: Royal Borough of Kensington And Chelsea
- Tenure: Share of Freehold approx. 960 years remaining
- Service Charge: Approx. £7,350 per annum
- Ground Rent: Approx. £100 per annum
- Council Tax Band: Band H

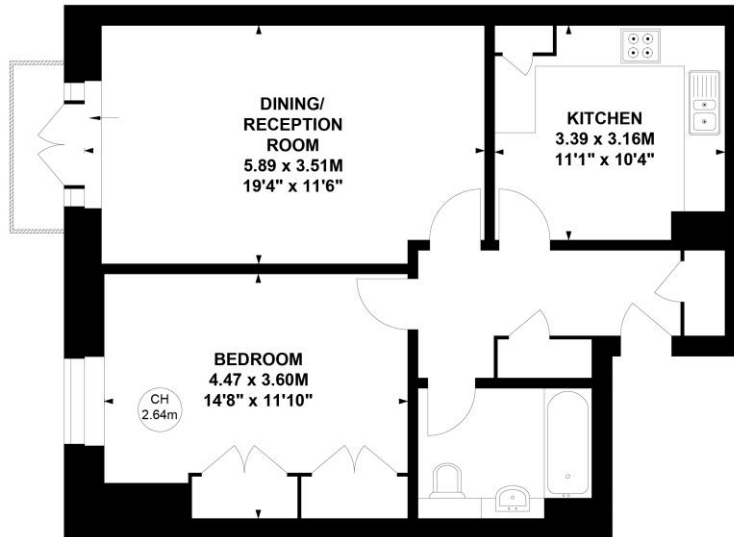


# Kensington Green, W8

Approximate gross internal area

61.40 sq m / 661 sq ft

Key :  
CH - Ceiling Height



## Second Floor

+44 (0) 20 7349 7055  
sales@jowebster.com

### Misdescription Act

We wish to advise prospective purchasers that these sales particulars are believed to be correct, but their accuracy is in no way guaranteed, nor do they form any part of contract. We have not carried out a detailed survey nor tested the services, appliances or specific fittings. Measurements are approximate.

This plan is not to scale and must be used as layout guidance only. All measurements and areas are approximate and should not be relied upon to provide accurate information. This plan must not be relied upon when making property valuations, design considerations or any other such relevant decisions. We accept no responsibility or liability (whether in contract, tort or otherwise) in relation to any loss whatsoever arising from or in connection with any use of this plan or the adequacy, accuracy or completeness of it or any information within it.