



Woburn Place, WC1H

£315,000

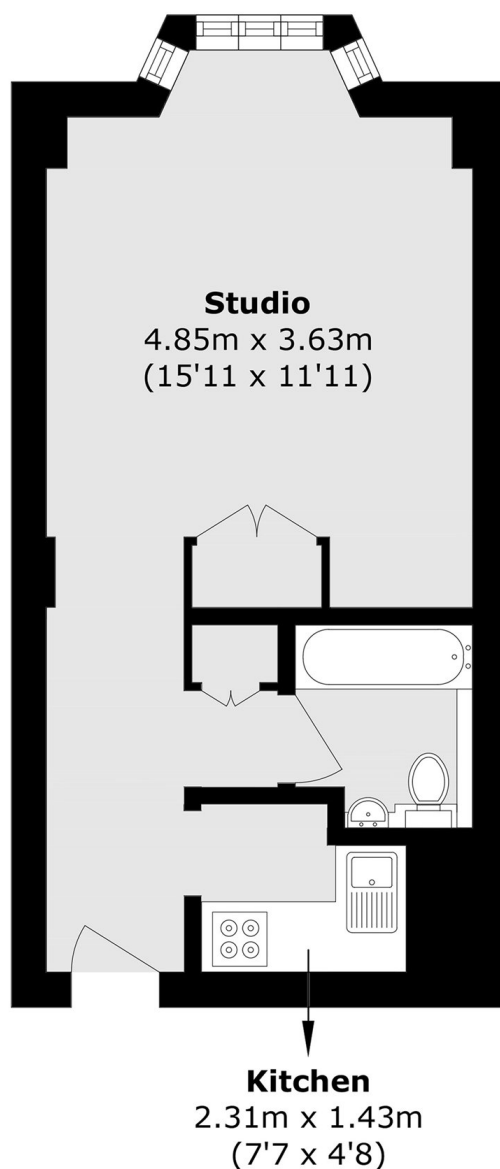
One of the larger, bright west facing studios set within a newly renovated 1930's mansion block. The property has recently been decorated and includes a separate kitchen, family bathroom and open plan living/bedroom area with a built in bed and generous storage, as well as a bay window. Heating and hot water is included in the annual service charge.

Located just moments from Russell Square tube station and the Brunswick Centre with a Waitrose supermarket as well as many shops and restaurants. The West End and the Eurostar terminal at St Pancras are less than half a mile away as well and UCL, SOAS and LSE are close by.

Features

- Share Of Freehold
- Studio Apartment
- 24 Hour Concierge
- Lift Access
- Separate Kitchen
- No Onward Chain

Woburn Place, London, WC1H



Total area (approx.): 27.3 sq. m (293.9 sq. ft)