



www.jeffreygross.co.uk

CARDIFF

VALE

CAERPHELLY

BRISTOL



Wrington Hill

WRINGTON

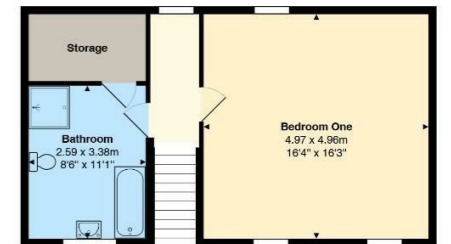
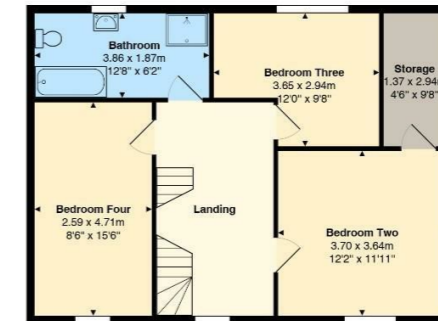


Comments by Ms Ashton Jones



Property Specialist
Ms Ashton Jones
 Branch manager
 a.jones@thepropertyoutlet.com

Wrighton Hill, Wroughton, BS40 5PJ



All measurements are approximate and for display purposes only

Comments by the Homeowner





Wrington Hill

Wrington, Bristol, BS40 5PJ

PCM

£3,000 PCM



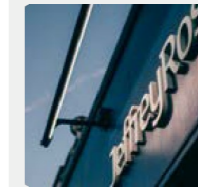
4 Bedroom(s)



3 Bathroom(s)



2292.73 sq ft



Contact our
Property Outlet Branch

0117 935 4565

A very special and energy efficient family home set in an elevated position above the desirable village of Bristol. Available for immediate occupation, this immaculate and very versatile home commands an impressive view of the Mendip Hills, and is within easy reach of Bristol and the M5. Located close to the village of Wrington, which boasts amenities including 2 pubs, village stores, pharmacy, primary school and great community.

The house has an enclosed rear courtyard and a front lawn.

Internally comprising:

Ground floor - generally accessed via the back / kitchen door.

There is a W.C / shower room, utility area, large modern fitted kitchen living area with bi-fold doors to courtyard, a dining room and a snug lounge with log burner. Plus understairs storage.

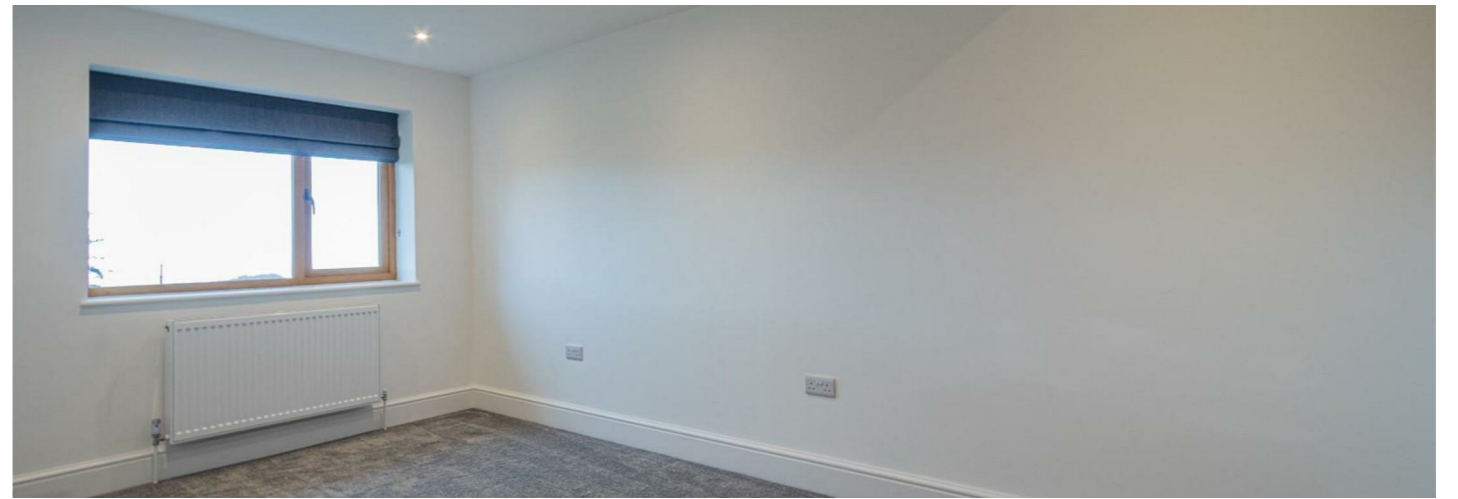
First Floor: 3 double bedrooms, master with attached dressing room / office space. A large family bathroom with bath and separate shower.

Top Floor: A lovely double size loft room and a further good size bathroom with both bath and shower.

The house benefits from oil central heating and a store shed.

Video available.

WHAT3WORDS - dignitary.lame.hooks



CARDIFF

VALE

CAERPHILLY

BRISTOL

www.jeffreygross.co.uk





Energy Efficiency Rating		Current	Potential
Very energy efficient - lower running costs		100+	100+
(92 plus) A			
(81-91) B			
(69-80) C			
(55-68) D			
(39-54) E			
(21-38) F			
(1-20) G			
Not energy efficient - higher running costs			
England & Wales		EU Directive 2002/91/EC 